

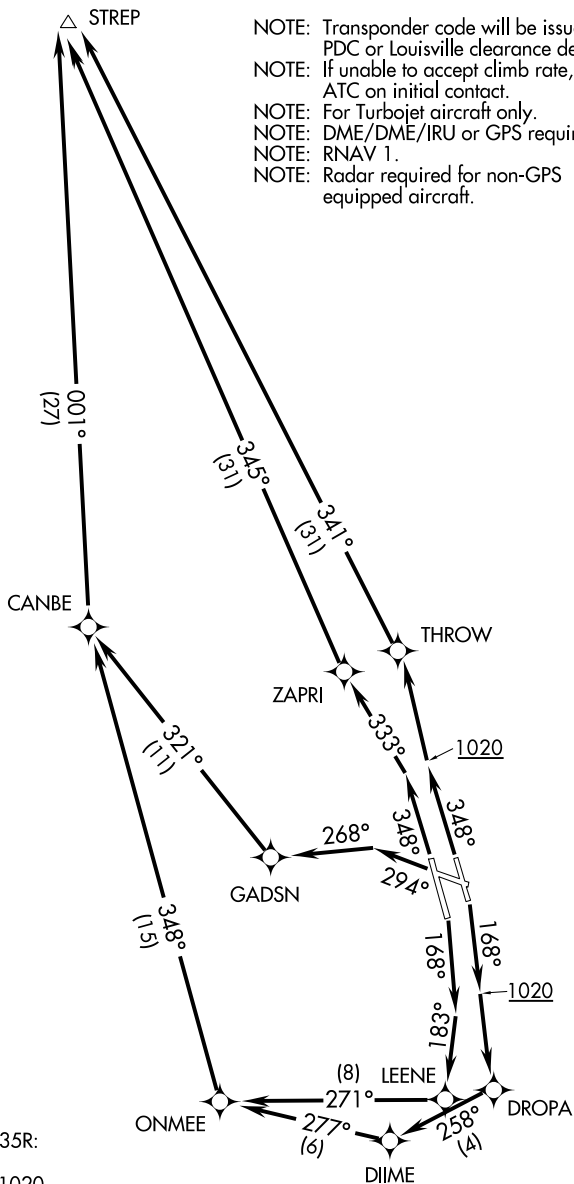
# STREP ONE DEPARTURE (RNAV)

SL-239 (FAA)

LOUISVILLE, KENTUCKY

ATIS 118.725  
 GND CON 121.7 348.6  
 CLNC DEL 126.1 275.8  
 LOUISVILLE DEP CON  
 132.075 327.0 (EAST)  
 123.675 327.0 (WEST)  
 LOUISVILLE TOWER  
 124.2 257.8

- NOTE: Transponder code will be issued via PDC or Louisville clearance delivery.
- NOTE: If unable to accept climb rate, advise ATC on initial contact.
- NOTE: For Turbojet aircraft only.
- NOTE: DME/DME/IRU or GPS required.
- NOTE: RNAV 1.
- NOTE: Radar required for non-GPS equipped aircraft.



**TAKEOFF MINIMUMS:**  
 Rwy 11: NA-Air Traffic.  
 Rwys 17L, 17R, 29, 35L, 35R:  
 Standard with minimum  
 climb of 500' per NM to 1020.

(NARRATIVE ON FOLLOWING PAGE)

NOTE: Chart not to scale.

# STREP ONE DEPARTURE (RNAV)

LOUISVILLE, KENTUCKY