

WAAS CH 70709 W35D	APP CRS 348°	Rwy Idg THRE 472 Apt Elev 501	7800
----------------------------------------	------------------------	---------------------------------------------------	-------------

RNAV (GPS) Y RWY 35R

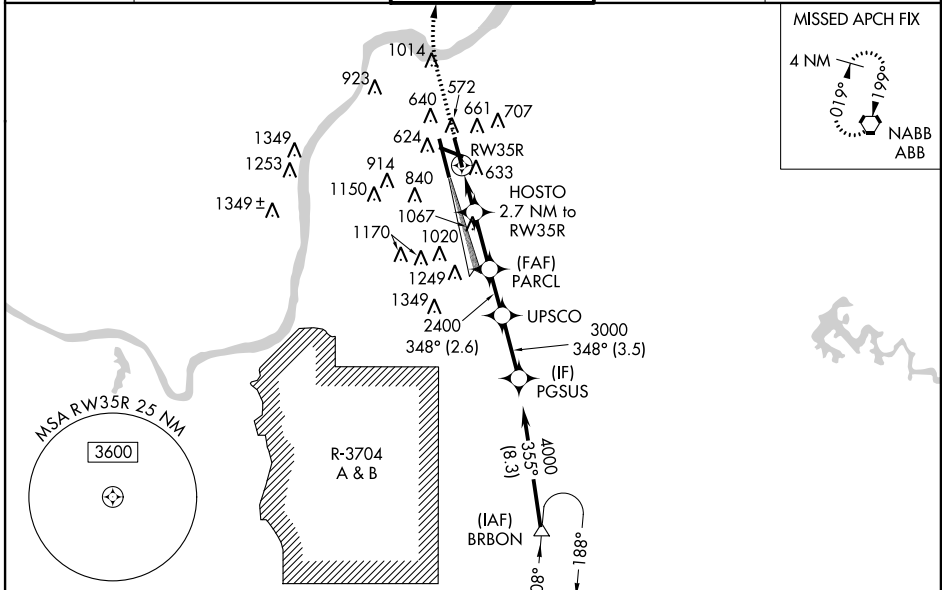
LOUISVILLE INTL-STANDIFORD FIELD (SDF)

▼ Circling to Rwy 11 NA at night. For uncompensated Baro-VNAV systems, LNAV/VNAV NA below -14°C (7°F) or above 37°C (98°F). DME/DME RNP-0.3 NA. For inoperative ALSF-2, increase LNAV/VNAV all Cats visibility to 1½ and LNAV Cats C/D visibility to 1½ mile. Simultaneous approach authorized with Rwy 35L. LNAV procedure NA during simultaneous operations. Use of FD or AP providing RNAV track guidance required during simultaneous operations.

ALSF-2

MISSED APPROACH:
Climb to 1000 then climbing right turn to 3000 direct ABB VORTAC and hold.

ATIS 118.725	LOUISVILLE APP CON 132.075 327.0 (EAST) 123.675 327.0 (WEST)	LOUISVILLE TOWER 124.2 257.8	GND CON 121.7 348.6	CLNC DEL 126.1 275.8
-------------------------------	-----------------------------------------------------------------------------------------	-----------------------------------------------	--------------------------------------	---------------------------------------

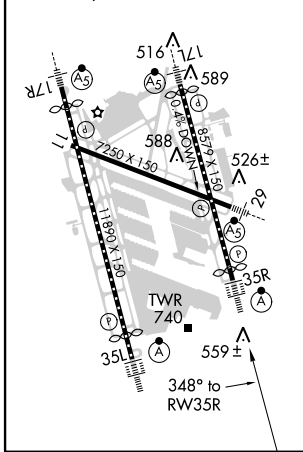


SE-1, 07 FEB 2013 to 07 MAR 2013

SE-1, 07 FEB 2013 to 07 MAR 2013

ELEV 501	D	THRE 472
-----------------	----------	-----------------

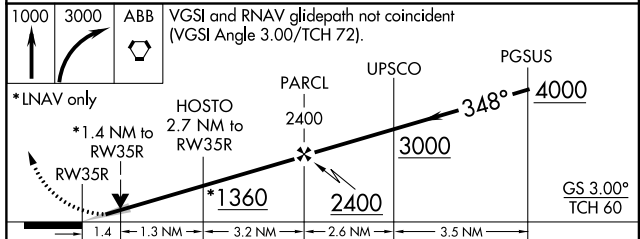
HIRL all Rwys
TDZ/CL Rwys 17L, 17R, 35L, and 35R



1450

HOLD 4000 → 4 NM

Arrival holding not required at BRBON on V5-513 northbound.



CATEGORY	A	B	C	D
LPV DA		672/24	200 (200-½)	
LNAV/VNAV DA		901/50	429 (400-1)	
LNAV MDA	1000/24	528 (500-½)	1000/55	528 (500-1¼)
CIRCLING	1040-1 539 (600-1)	1140-1 639 (700-1)	1140-1¾ 639 (700-1¾)	1140-2 639 (700-2)