

WAAS CH 86203 W35A	APP CRS 348°	Rwy Idg 10000 THRE 461 Apt Elev 501
--	------------------------	--

RNAV (GPS) Y RWY 35L

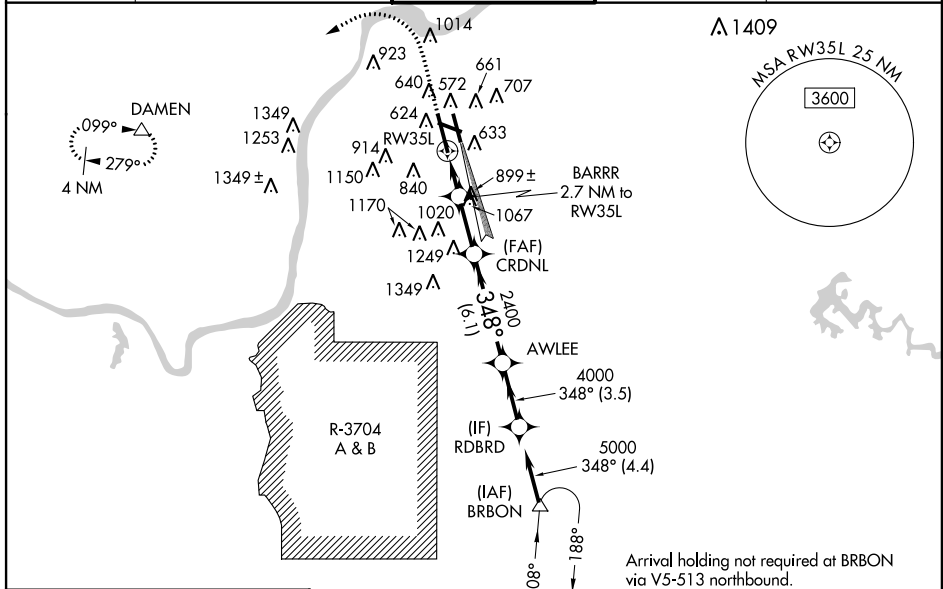
LOUISVILLE INTL-STANDIFORD FIELD (SDF)

▼ Circling to Rwy 11 NA at night. For uncompensated Baro-VNAV systems, LNAV/VNAV NA below -14°C (7°F) or above 37°C (98°F). DME/DME RNP-0.3 NA. For inoperative ALSF-2, increase LNAV Cats C/D visibility to 1½ mile. Simultaneous approach authorized with Rwy 35R. LNAV procedure NA during simultaneous operations. Use of FD or AP providing RNAV track guidance required during simultaneous operations.



MISSED APPROACH: Climb to 1000 then climbing left turn to 3000 direct DAMEN and hold.

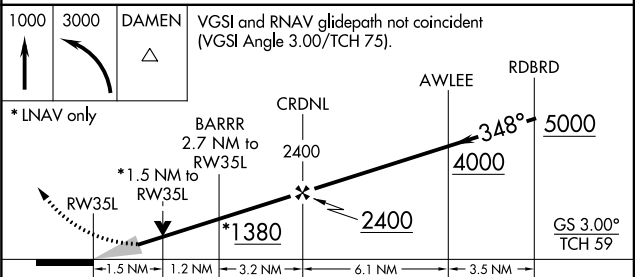
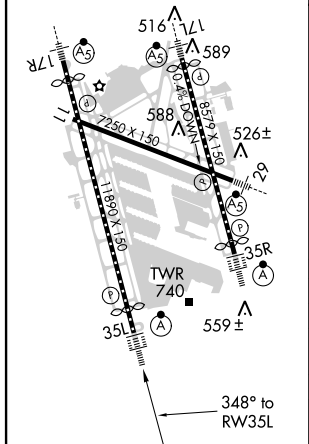
ATIS 118.725	LOUISVILLE APP CON 132.075 327.0 (EAST) 123.675 327.0 (WEST)	LOUISVILLE TOWER 124.2 257.8	GND CON 121.7 348.6	CLNC DEL 126.1 275.8
------------------------	--	--	-------------------------------	--------------------------------



SE-1, 07 FEB 2013 to 07 MAR 2013

SE-1, 07 FEB 2013 to 07 MAR 2013

ELEV 501	D	THRE 461
HIRL all Rwys TDZ/CL Rwys 17L, 17R, 35L, and 35R		



CATEGORY	A	B	C	D
LPV DA		661/24	200 (200-½)	
LNAV/VNAV DA		901/50	440 (400-1)	
LNAV MDA	1000/24	539 (500-½)	1000/55	539 (500-1¼)
CIRCLING	1040-1 539 (600-1)	1140-1 639 (700-1)	1140-1¾ 639 (700-1¾)	1140-2 639 (700-2)