

WAAS CH 57909 W17A	APP CRS 168°	Rwy Idg 10000 THRE 486 Apt Elev 501
--	------------------------	--

RNAV (GPS) Y RWY 17R

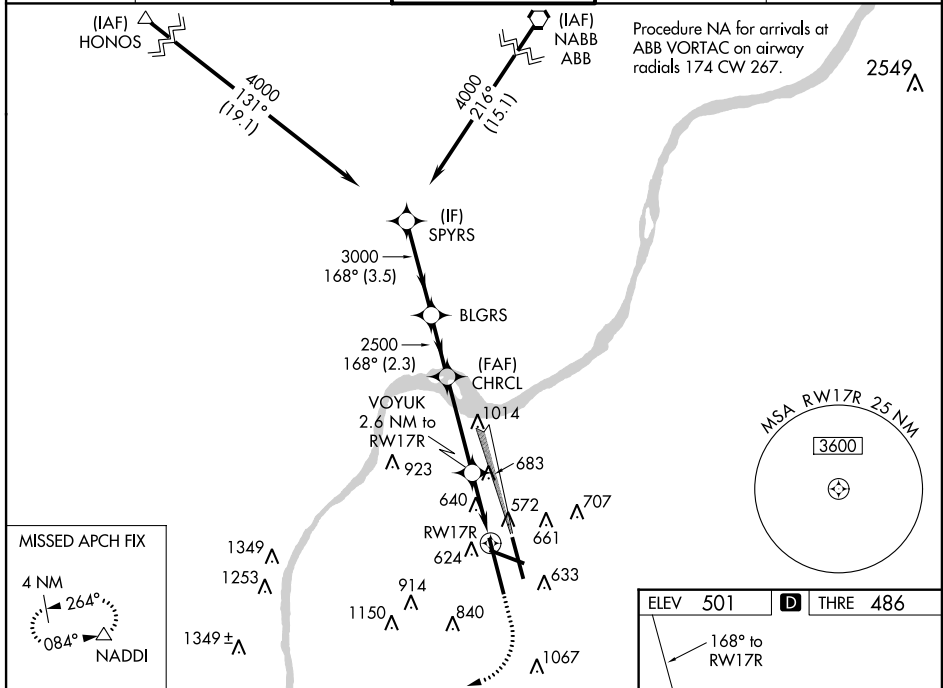
LOUISVILLE INTL-STANDIFORD FIELD (SDF)

▼ For uncompensated Baro-VNAV systems, LNAV/VNAV NA below -14°C (7°F) or above 37°C (98°F). Simultaneous approach authorized with Rwy 17L. DME/DME RNP-0.3 NA. For inoperative MALSR, increase LNAV Cat C/D visibility to 1½ miles. LNAV procedure NA during simultaneous operations. Use of FD or AP providing RNAV track guidance required during simultaneous operations. Circling to Rwy 11 NA at night.



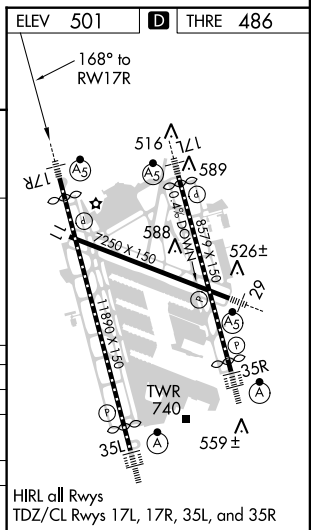
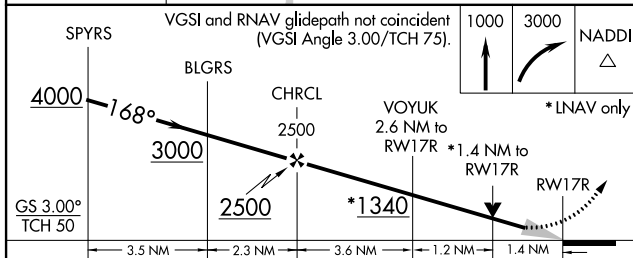
MISSED APPROACH: Climb to 1000 then climbing right turn to 3000 direct NADDI and hold.

ATIS 118.725	LOUISVILLE APP CON 132.075 327.0 (EAST) 123.675 327.0 (WEST)	LOUISVILLE TOWER 124.2 257.8	GND CON 121.7 348.6	CLNC DEL 126.1 275.8
------------------------	--	--	-------------------------------	--------------------------------



SE-1, 07 FEB 2013 to 07 MAR 2013

SE-1, 07 FEB 2013 to 07 MAR 2013



CATEGORY	A	B	C	D
LPV DA		686/24	200 (200-½)	
LNAV/VNAV DA		818/32	332 (400-¾)	
LNAV MDA	1000/24	514 (500-½)	1000/55	514 (500-1¼)
CIRCLING	1040-1 539 (600-1)	1140-1 639 (700-1)	1140-1¾ 639 (700-1¾)	1140-2 639 (700-2)