


WAAS CH <b>90101</b> <b>W17B</b>	APP CRS <b>168°</b>	Rwy Idg THRE <b>499</b> Apt Elev <b>501</b>	<b>7800</b>
--	------------------------	---	-------------

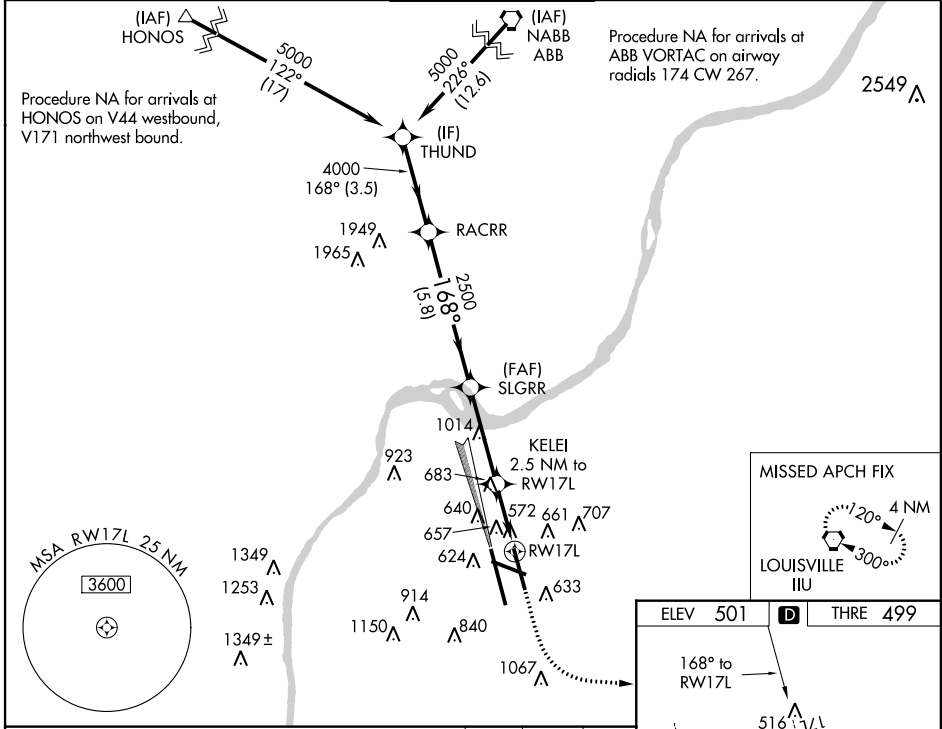
# RNAV (GPS) Y RWY 17L

LOUISVILLE INTL-STANDIFORD FIELD (SDF)

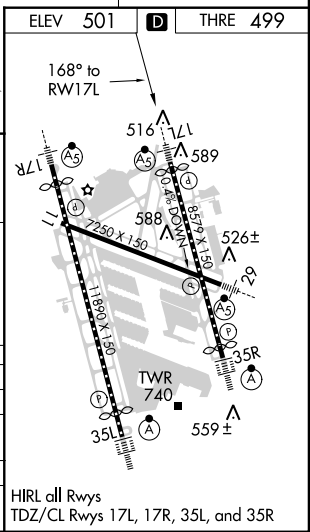
▼ For uncompensated Baro-VNAV systems, LNAV/VNAV NA below -14°C (7°F) or above 37°C (98°F). Simultaneous approach authorized with Rwy 17R. DME/DME RNP-0.3 NA. LNAV procedure NA during simultaneous operations. Use of FD or AP providing RNAV track guidance required during simultaneous operations. Circling to Rwy 11 NA at night.

**MALSR**  
 MISSED APPROACH: Climb to 1000 then climbing left turn to 3000 direct IIU VORTAC and hold, continue climb-in-hold to 3000.

ATIS <b>118.725</b>	LOUISVILLE APP CON <b>132.075 327.0 (EAST)</b> <b>123.675 327.0 (WEST)</b>	LOUISVILLE TOWER <b>124.2 257.8</b>	GND CON <b>121.7 348.6</b>	CLNC DEL <b>126.1 275.8</b>
------------------------	--	--	-------------------------------	--------------------------------



THUND	VGSI and RNAV glidepath not coincident (VGSI Angle 3.32/TCH 71).			
5000	RACRR	SLGRR	KELEI	IIU
4000	2500	2500	2.5 NM to RW17L	1000
GS 3.00°			*1 NM to RW17L	3000
TCH 55			*LNAV only	IIU
	3.5 NM	5.8 NM	3.6 NM	1.5 NM
CATEGORY	A	B	C	D
LPV DA		699/24	200 (200-½)	
LNAV/VNAV DA		818/24	319 (400-½)	
LNAV MDA	920/24	421 (500-½)	920/40	421 (500-¾)
CIRCLING	1040-1 539 (600-1)	1140-1 639 (700-1)	1140-1¾ 639 (700-1¾)	1140-2 639 (700-2)



SE-1, 07 FEB 2013 to 07 MAR 2013

SE-1, 07 FEB 2013 to 07 MAR 2013