

APP CRS	Rwy Idg	7800
348°	THRE	472
	Apt Elev	501

RNAV (RNP) Z RWY 35R

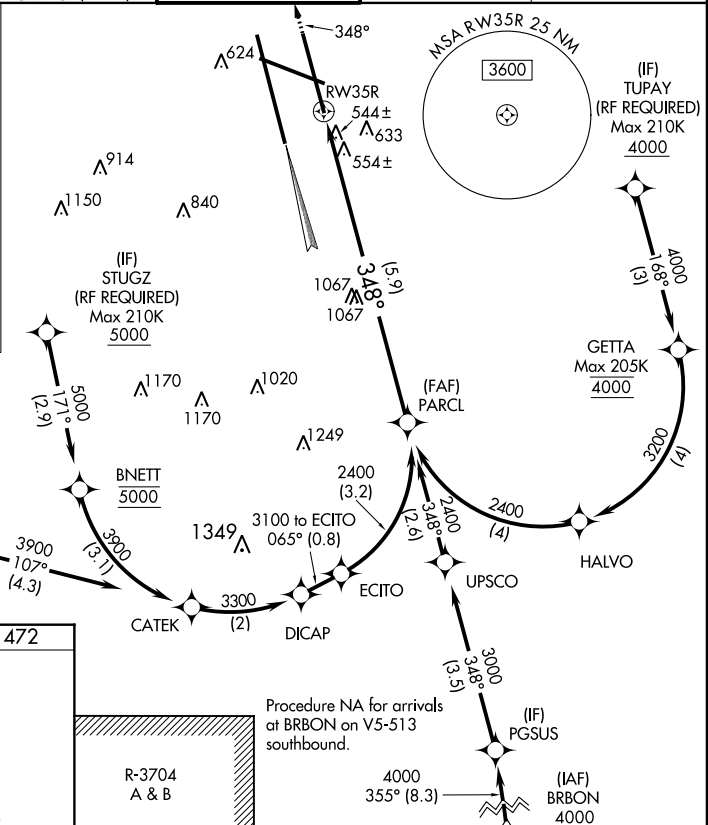
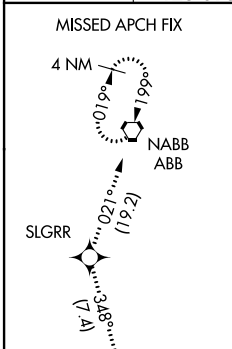
LOUISVILLE INTL-STANDIFORD FIELD (SDF)

For uncompensated Baro-VNAV systems, procedure NA below -14°C (7°F) or above 37°C (98°F). GPS required. For inop ALSF-2, increase RNP 0.12 all Cats visibility to RVR 5000 and RNP 0.30 all Cats visibility to 1½. Simultaneous approach authorized with Rwy 35L, except for arrivals at STUGZ, TUPAY, and DIGRR. Use of FD or AP providing RNAV track guidance required during simultaneous operations.

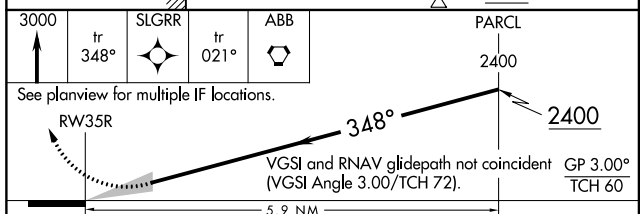
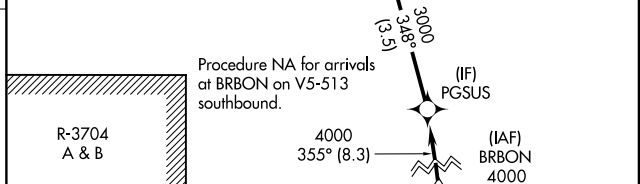
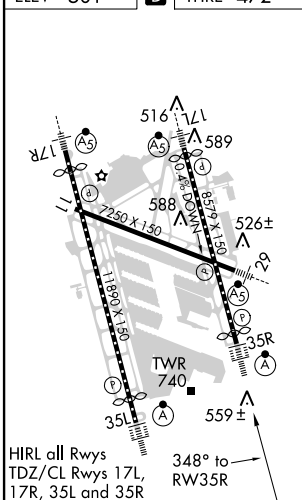


MISSED APPROACH: Climb to 3000 on track 348° to SLGRR and on track 021° to ABB VORTAC and hold.

LOUISVILLE APP CON	LOUISVILLE TOWER	GND CON	CLNC DEL
ATIS 118.725	132.075 327.0 (EAST) 123.675 327.0 (WEST)	124.2 257.8	121.7 348.6
		121.7 348.6	126.1 275.8



ELEV 501	D	THRE 472
----------	----------	----------



CATEGORY	A	B	C	D
RNP 0.12 DA		787/24	315 (300-1/2)	
RNP 0.30 DA		943/60	471 (500-1/4)	

AUTHORIZATION REQUIRED

SE-1, 07 FEB 2013 to 07 MAR 2013

SE-1, 07 FEB 2013 to 07 MAR 2013