

APP CRS	Rwy Idg	<b>10000</b>
<b>348°</b>	THRE	<b>461</b>
	Apt Elev	<b>501</b>

# RNAV (RNP) Z RWY 35L

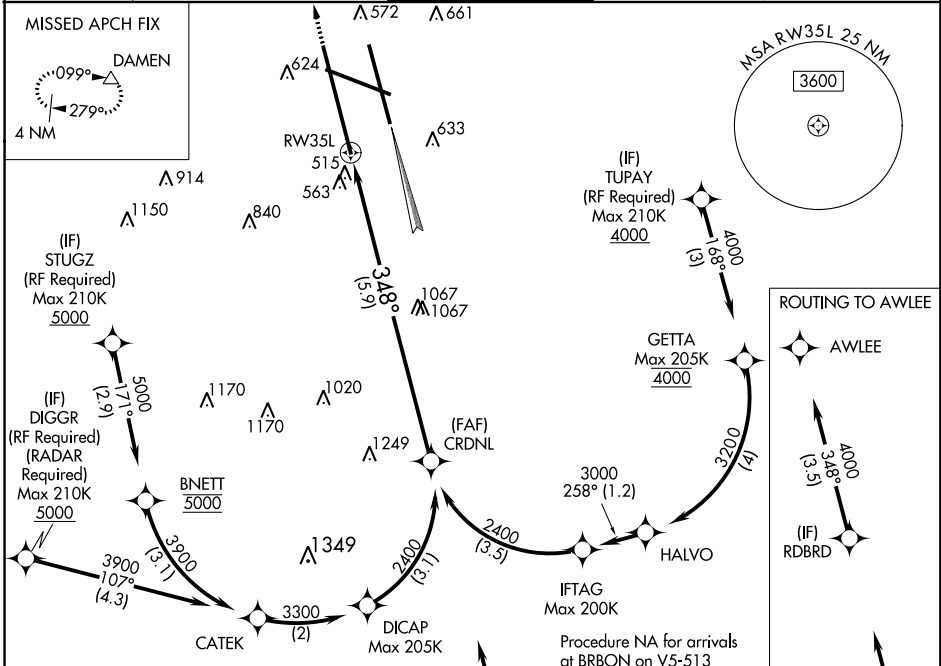
LOUISVILLE INTL-STANDIFORD FIELD (SDF)

▼ For uncompensated Baro-VNAV systems, procedure NA below -14°C (7°F) or above 37°C (98°F). GPS Required. For inop ALSF-2, increase RNP 0.12 all Cats visibility to RVR 5000 and RNP 0.30 all Cats visibility to 1 1/2 miles. Simultaneous approach authorized with Rwy 35R, except for arrivals at STUGZ, TUPAY, and DIGRR. Use of FD or AP providing RNAV track guidance required during simultaneous operations.



MISSED APPROACH: Climb to 1000 then climbing left turn to 3000 direct DAMEN and hold.

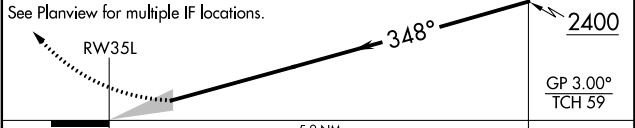
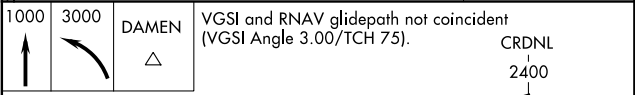
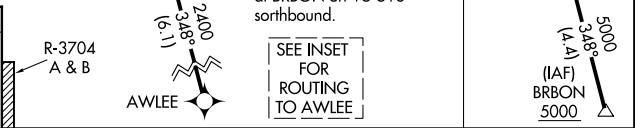
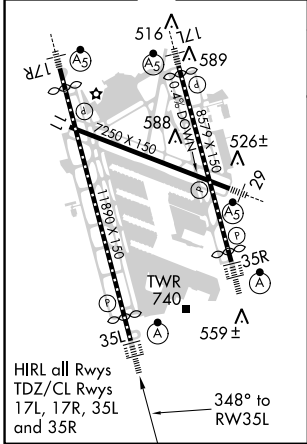
ATIS <b>118.725</b>	LOUISVILLE APP CON <b>132.075 327.0 (EAST)</b> <b>123.675 327.0 (WEST)</b>	LOUISVILLE TOWER <b>124.2 257.8</b>	GND CON <b>121.7 348.6</b>	CLNC DEL <b>126.1 275.8</b>
------------------------	--	--	-------------------------------	--------------------------------



SE-1, 07 FEB 2013 to 07 MAR 2013

SE-1, 07 FEB 2013 to 07 MAR 2013

ELEV 501 **D** THRE 461



CATEGORY	A	B	C	D
RNP 0.12 DA		763/24	302 (300-1/2)	
RNP 0.30 DA		911/50	450 (500-1)	

**AUTHORIZATION REQUIRED**