

RNAV (RNP) Z RWY 17R

LOUISVILLE INTL-STANDIFORD FIELD (SDF)

APP CRS	Rwy Idg	10000
	THRE	486
168°	Apt Elev	501

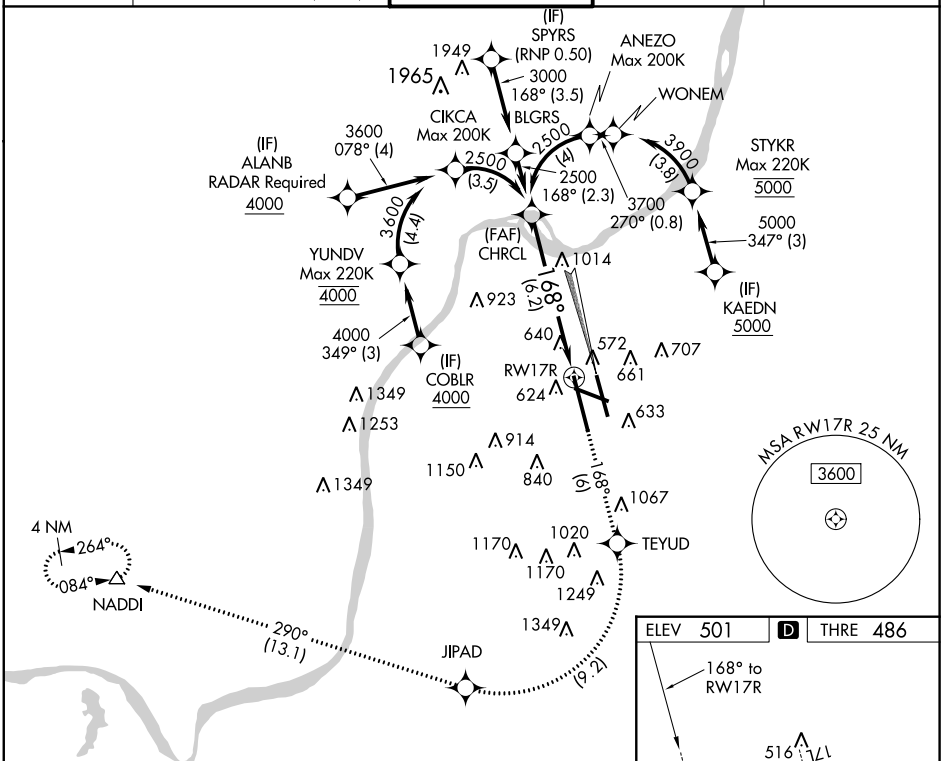
For uncompensated Baro-VNAV systems, procedure NA below -14°C (7°F) or above 54°C (130°F). RF required. GPS required. For inoperative MALS, increase RNP 0.30 all Cats visibility to 1 1/4 miles. Simultaneous approach authorized with Rwy 17L, except for arrivals at KAEDN, ALANB, and COBLR. Use of FD or AP providing RNAV track guidance required during simultaneous operations.

MALS



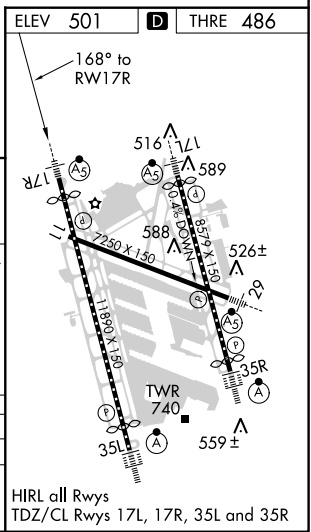
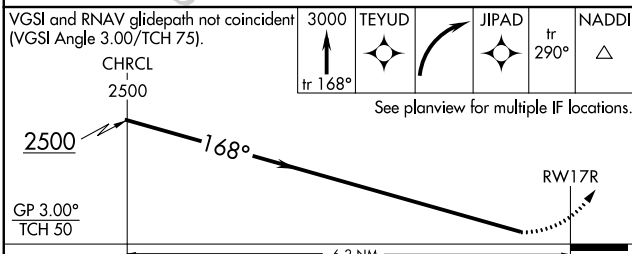
MISSED APPROACH: Climb to 3000 on track 168° to TEYUD right turn to JIPAD and on track 290° to NADDI and hold.

ATIS	LOUISVILLE APP CON	LOUISVILLE TOWER	GND CON	CLNC DEL
118.725	132.075 327.0 (EAST) 123.675 327.0 (WEST)	124.2 257.8	121.7 348.6	126.1 275.8



SE-1, 07 FEB 2013 to 07 MAR 2013

SE-1, 07 FEB 2013 to 07 MAR 2013



CATEGORY	A	B	C	D
RNP 0.30 DA		872/41	386 (400-3/4)	

AUTHORIZATION REQUIRED