

RNAV (RNP) Z RWY 17L

LOUISVILLE INTL-STANDIFORD FIELD (SDF)

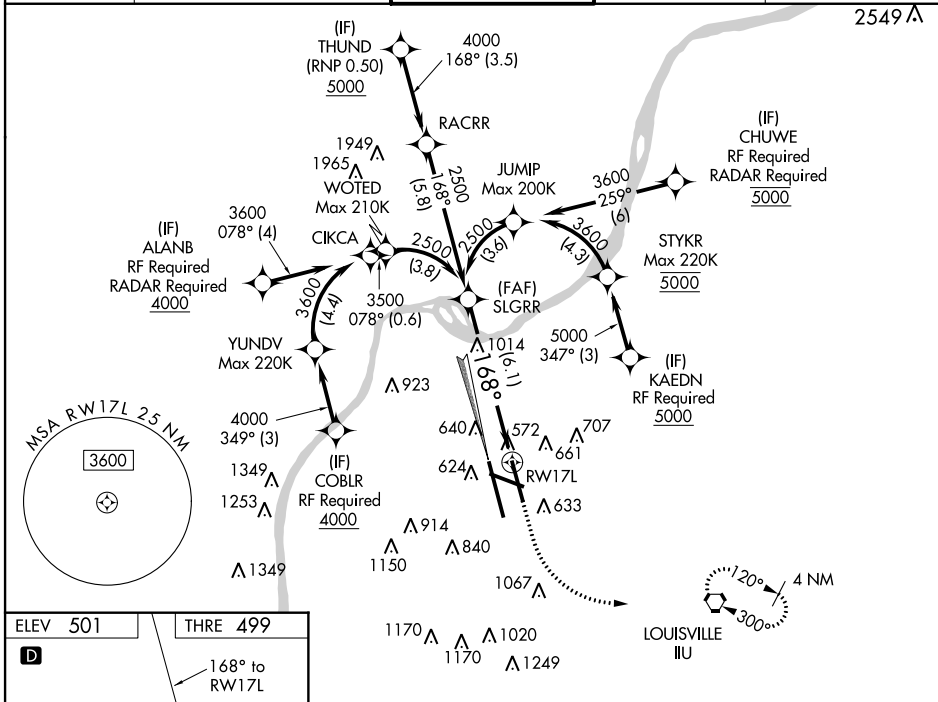
APP CRS	Rwy Idg	7800
168°	THRE	499
	Apt Elev	501

▼ For uncompensated Baro-VNAV systems, procedure NA below -14°C (7°F) or above 54°C (130°F). GPS required. For inoperative MALS/R, increase RNP 0.30 all Cats visibility to RVR 4500. Simultaneous approach authorized with Rwy 17R, except for arrivals at CHUWE, KAEDN, ALANB, and COBLR. Use of FD or AP providing RNAV track guidance required during simultaneous operations.



MISSED APPROACH: Climb to 1000 then climbing left turn to 3000 direct ILL VORTAC and hold, continue climb-in-hold to 3000.

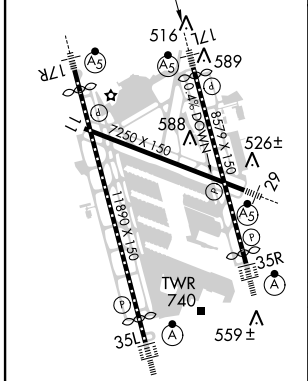
ATIS 118.725	LOUISVILLE APP CON 132.075 327.0 (EAST) 123.675 327.0 (WEST)	LOUISVILLE TOWER 124.2 257.8	GND CON 121.7 348.6	CLNC DEL 126.1 275.8
------------------------	--	--	-------------------------------	--------------------------------



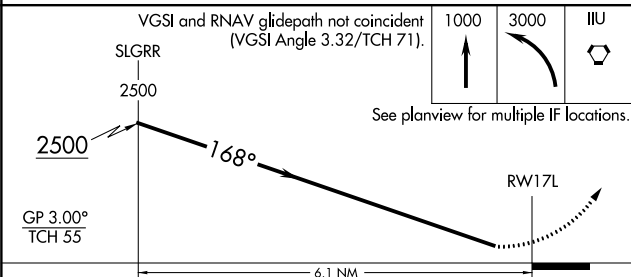
SE-1, 07 FEB 2013 to 07 MAR 2013

SE-1, 07 FEB 2013 to 07 MAR 2013

ELEV	501	THRE	499
------	-----	------	-----



HIRL all Rwys
TDZ/CL Rwys 17L, 17R, 35L and 35R



CATEGORY	A	B	C	D
RNP 0.30 DA		761/40	262 (300-3/4)	

AUTHORIZATION REQUIRED