

WAAS CH 81801 W29A	APP CRS 294°	Rwy Idg 7250 TDZE 480 Apt Elev 501
--	------------------------	---

RNAV (GPS) RWY 29

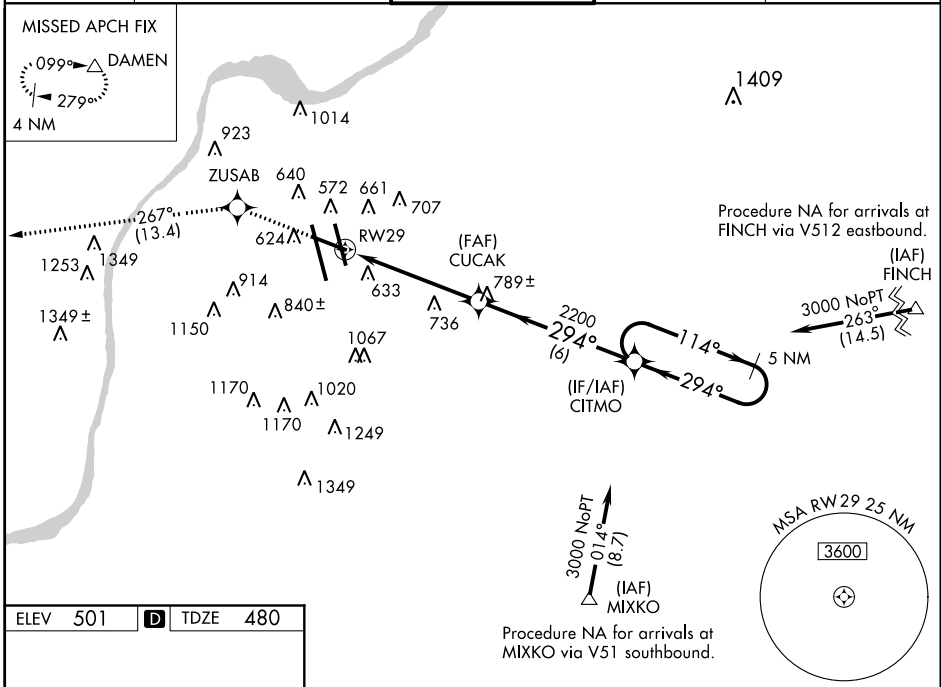
LOUISVILLE INTL-STANDIFORD FIELD (SDF)

▽ DME/DME RNP-0.3 NA. For uncompensated Baro-VNAV systems, LNAV/VNAV NA below -16° C (4° F) or above 48° C (118° F).
▲ If local altimeter setting not received, use Bowman Field altimeter setting. Baro-VNAV NA when using Bowman Field altimeter setting. For inoperative MALSR increase LPV visibility all Cats. to RVR 5000.



MISSED APPROACH: Climb to 3000 direct ZUSAB and via 267° track to DAMEN and hold.

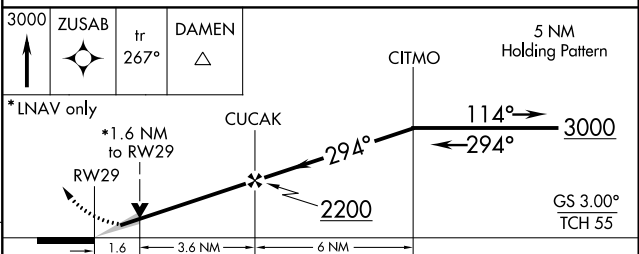
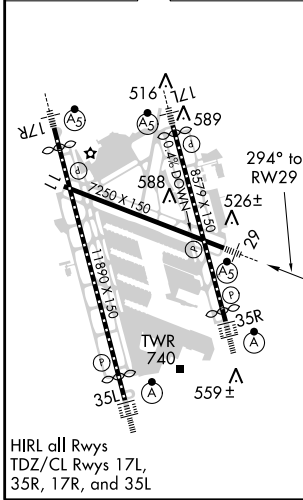
ATIS 118.725	LOUISVILLE APP CON 132.075 327.0 (EAST) 123.675 327.0 (WEST)	LOUISVILLE TOWER 124.2 257.8	GND CON 121.7 348.6	CLNC DEL 126.1 275.8
------------------------	--	--	-------------------------------	--------------------------------



SE-1, 07 FEB 2013 to 07 MAR 2013

SE-1, 07 FEB 2013 to 07 MAR 2013

ELEV 501	D	TDZE 480
----------	----------	----------



CATEGORY	A	B	C	D
LPV DA		773/24	293 (300-1/2)	
LNAV/VNAV DA		943/50	463 (500-1)	
LNAV MDA	1040/24	560 (600-1/2)	1040/50 560 (600-1)	1040/60 560 (600-1/4)
CIRCLING	1040-1 539 (600-1)	1160-1 659 (700-1)	1160-1 3/4 659 (700-1 3/4)	1180-2 1/4 679 (700-2 1/4)