

(MYS1.MYS) 12264

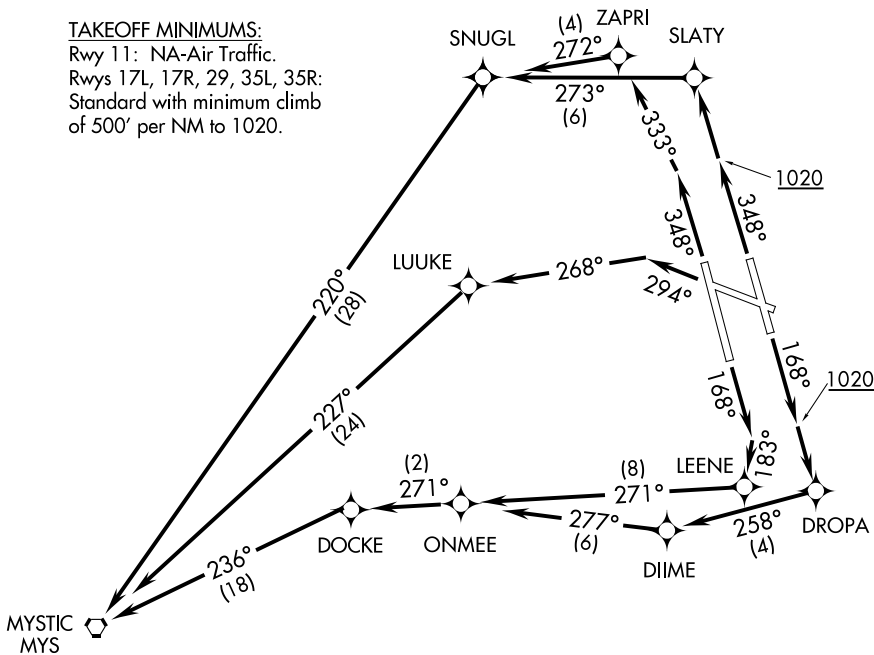
SL-239 (FAA)

LOUISVILLE INTL-STANDIFORD FIELD (SDF)
LOUISVILLE, KENTUCKY

MYSTIC ONE DEPARTURE (RNAV)

ATIS 118.725
GND CON
121.7 348.6
CLNC DEL
126.1 275.8
LOUISVILLE DEP CON
132.075 327.0 (EAST)
123.675 327.0 (WEST)
LOUISVILLE TOWER
124.2 257.8

TAKEOFF MINIMUMS:
Rwy 11: NA-Air Traffic.
Rwys 17L, 17R, 29, 35L, 35R:
Standard with minimum climb
of 500' per NM to 1020.



- NOTE: Transponder code will be issued via PDC or Louisville clearance delivery.
- NOTE: If unable to accept climb rate, advise ATC on initial contact.
- NOTE: For Turbojet aircraft only.
- NOTE: DME/DME/IRU or GPS required.
- NOTE: RNAV 1.
- NOTE: Radar required for non-GPS equipped aircraft.

(NARRATIVE ON FOLLOWING PAGE)

NOTE: Chart not to scale.

MYSTIC ONE DEPARTURE (RNAV)

(MYS1.MYS) 12264

LOUISVILLE, KENTUCKY

LOUISVILLE INTL-STANDIFORD FIELD (SDF)

SE-1, 07 FEB 2013 to 07 MAR 2013

SE-1, 07 FEB 2013 to 07 MAR 2013