

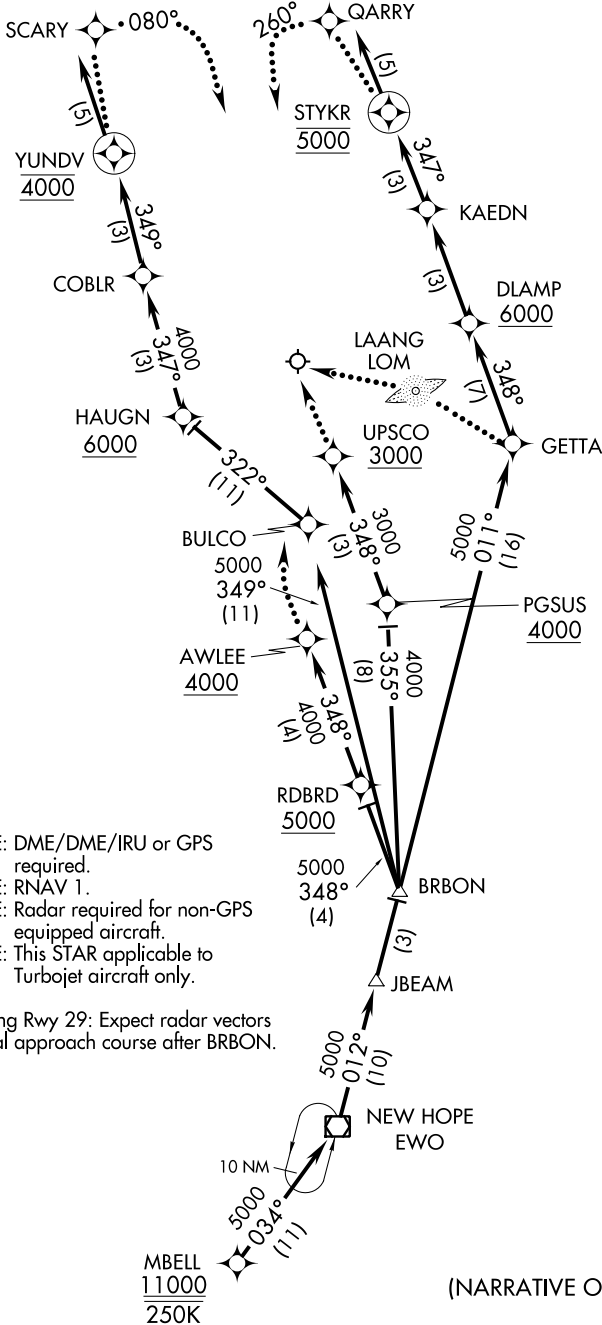
(MBELL.MBELL1) 12208

ST-239 (FAA)

LOUISVILLE INTL-STANDIFORD FIELD (SDF)
LOUISVILLE, KENTUCKY

MBELL ONE ARRIVAL (RNAV)

LOUISVILLE APP CON
132.075 327.0 (EAST)
123.675 327.0 (WEST)
STANDIFORD ATIS
118.725



- NOTE: DME/DME/IRU or GPS required.
- NOTE: RNAV 1.
- NOTE: Radar required for non-GPS equipped aircraft.
- NOTE: This STAR applicable to Turbojet aircraft only.

Landing Rwy 29: Expect radar vectors to final approach course after BRBON.

(NARRATIVE ON FOLLOWING PAGE)

NOTE: Chart not to scale.

MBELL ONE ARRIVAL (RNAV)

(MBELL.MBELL1) 12208

LOUISVILLE, KENTUCKY
LOUISVILLE INTL-STANDIFORD FIELD (SDF)

SE-1, 07 FEB 2013 to 07 MAR 2013

SE-1, 07 FEB 2013 to 07 MAR 2013