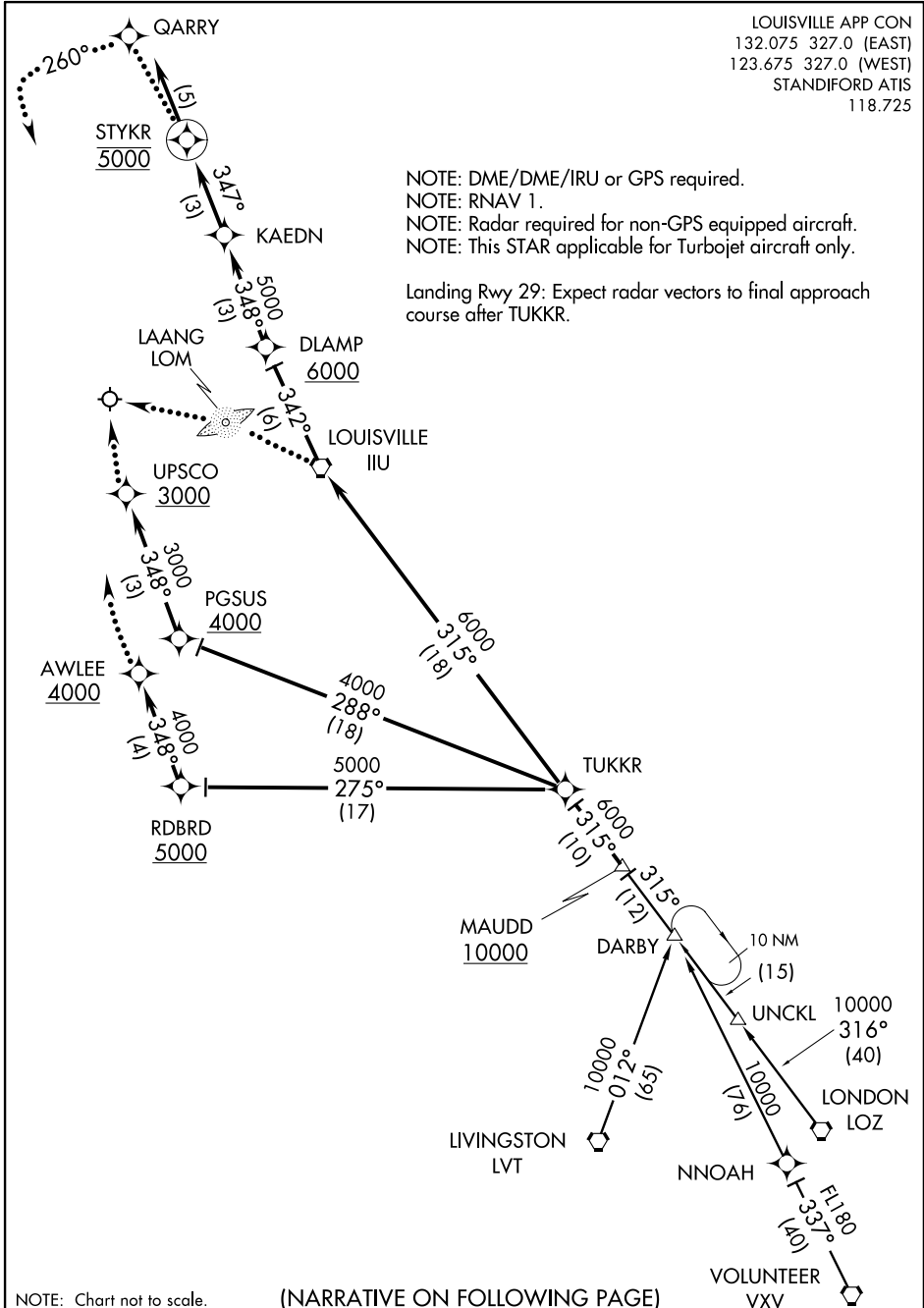


MAUDD ONE ARRIVAL (RNAV)

LOUISVILLE APP CON
132.075 327.0 (EAST)
123.675 327.0 (WEST)
STANDIFORD ATIS
118.725

NOTE: DME/DME/IRU or GPS required.
NOTE: RNAV 1.
NOTE: Radar required for non-GPS equipped aircraft.
NOTE: This STAR applicable for Turbojet aircraft only.

Landing Rwy 29: Expect radar vectors to final approach course after TUKKR.



SE-1, 07 FEB 2013 to 07 MAR 2013

SE-1, 07 FEB 2013 to 07 MAR 2013

NOTE: Chart not to scale.

(NARRATIVE ON FOLLOWING PAGE)

MAUDD ONE ARRIVAL (RNAV)