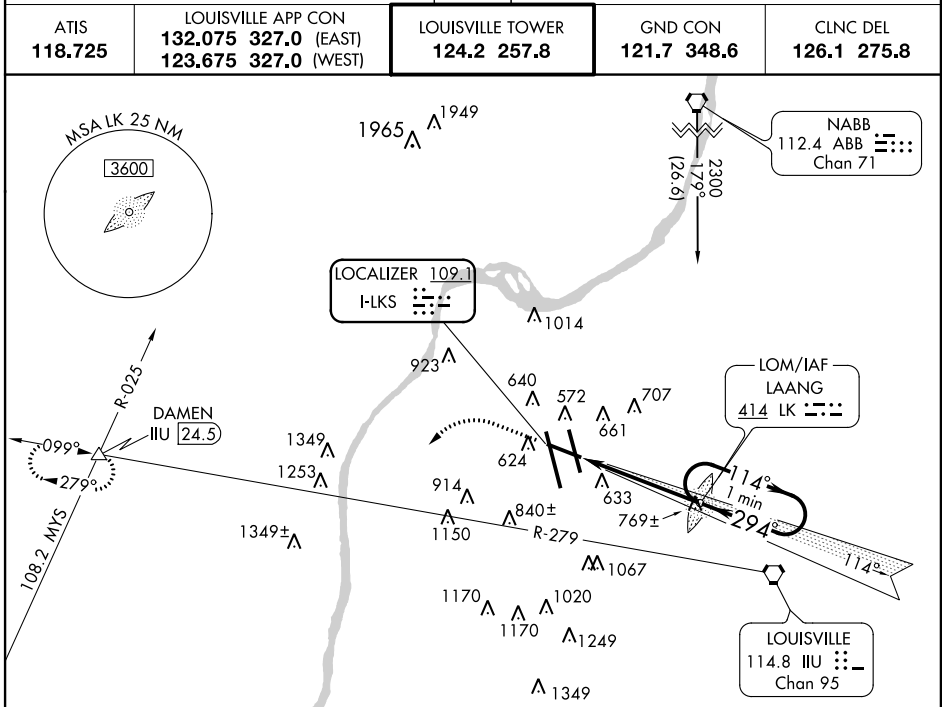


LOC RWY 29

LOUISVILLE INTL-STANDIFORD FIELD (SDF)

LOC I-LKS 109.1	APP CRS 294°	Rwy ldg TDZE Apt Elev	7250 481 500
---------------------------	------------------------	-----------------------------	-----------------------------------------

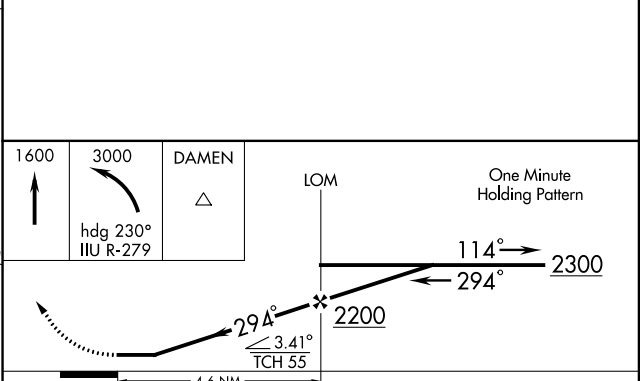
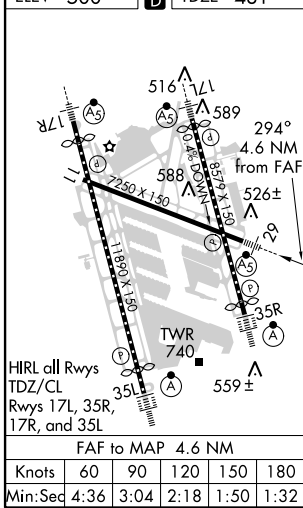
	ADF Required.		MISSED APPROACH: Climb to 1600 then climbing left turn to 3000 via heading 230° and IIU R-279 to DAMEN Int/IIU 24.5 DME and hold.	
	ATIS 118.725	LOUISVILLE APP CON 132.075 327.0 (EAST) 123.675 327.0 (WEST)	LOUISVILLE TOWER 124.2 257.8	GND CON 121.7 348.6



SE-1, 07 FEB 2013 to 07 MAR 2013

SE-1, 07 FEB 2013 to 07 MAR 2013

ELEV 500	D	TDZE 481
----------	----------	----------



CATEGORY	A	B	C	D
S-29	980/24	499 (500-½)	980/40 499 (500-¾)	980/50 499 (500-1)
CIRCLING	1040-1 540 (600-1)	1140-1 640 (700-1)	1140-1¾ 640 (700-1¾)	1140-2 640 (700-2)