

LOC/DME I-RLI 109.35 Chan 30 (Y)	APP CRS 349°	Rwy Idg THRE Apt Elev 10000 461 501
---	------------------------	---

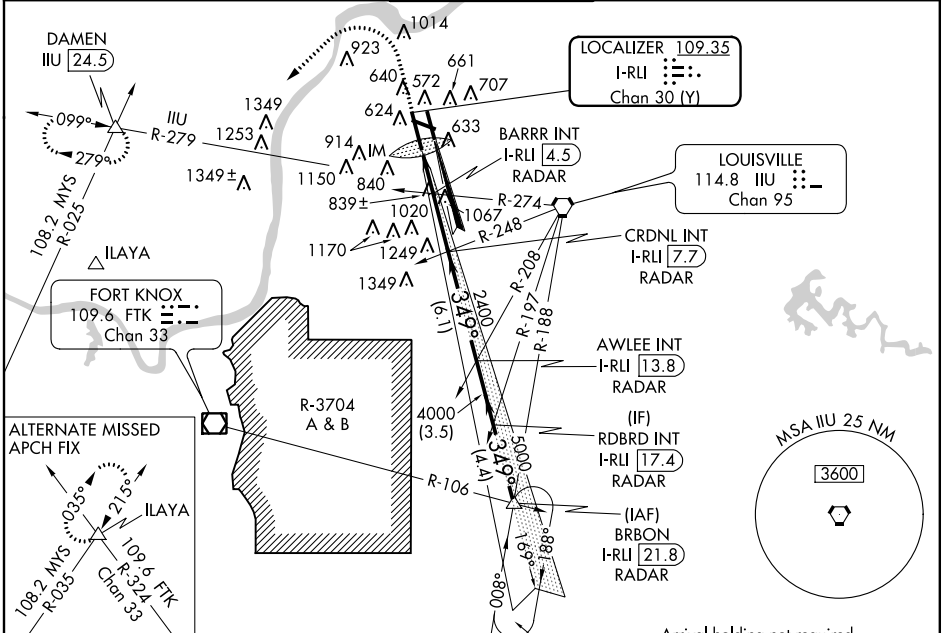
ILS or LOC RWY 35L

LOUISVILLE INTL-STANDIFORD FIELD (SDF)

Simultaneous approach authorized with Rwy 35R. Circling to Rwy 11 NA at night. For inoperative ALSF-2, increase S-LOC 35L BARRR fix minimums Cat C and D visibility to 1½ mile.

MISSED APPROACH: Climb to 1600 then climbing left turn to 3000 on heading 230° and IJU VORTAC R-279 to DAMEN INT/IJU 24.5 DME and hold.

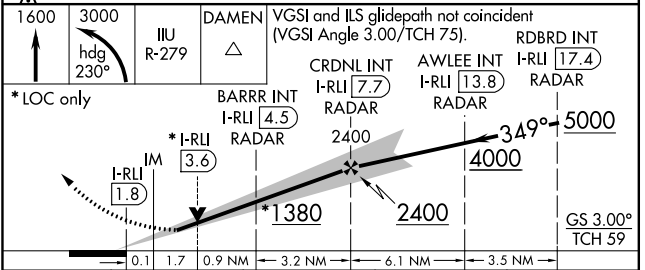
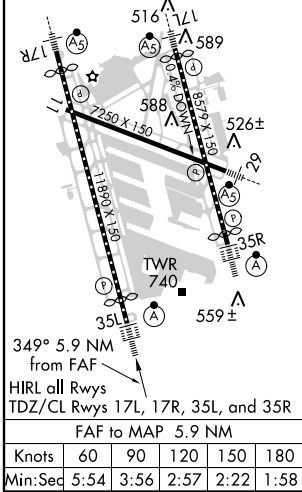
ATIS 118.725	LOUISVILLE APP CON 132.075 327.0 (EAST) 123.675 327.0 (WEST)	LOUISVILLE TOWER 124.2 257.8	GND CON 121.7 348.6	CLNC DEL 126.1 275.8
------------------------	--	--	-------------------------------	--------------------------------



SE-1, 07 FEB 2013 to 07 MAR 2013

SE-1, 07 FEB 2013 to 07 MAR 2013

ELEV 501	D	THRE 461
----------	----------	----------



CATEGORY	A	B	C	D
S-ILS 35L	661/18 200 (200-½)			
S-LOC 35L	1380/40	919 (900-¾)	1380-2	919 (900-2)
CIRCLING	1380-1¼	879 (900-1¼)	1380-2½	1380-2¾
BARRR FIX MINIMUMS (DUAL VOR RECEIVERS OR DME OR RADAR REQUIRED)				
S-LOC 35L	1100/24	639 (600-½)	1100-1¾	639 (600-1¾)
CIRCLING	1100-1	1140-1	1140-1¾	1140-2
	599 (600-1)	639 (700-1)	639 (700-1¾)	639 (700-2)