

LOC/DME I-SNU 110.3 Chan 40	APP CRS 168°	Rwy ldg 10000 THRE 486 Apt Elev 501
--	------------------------	--

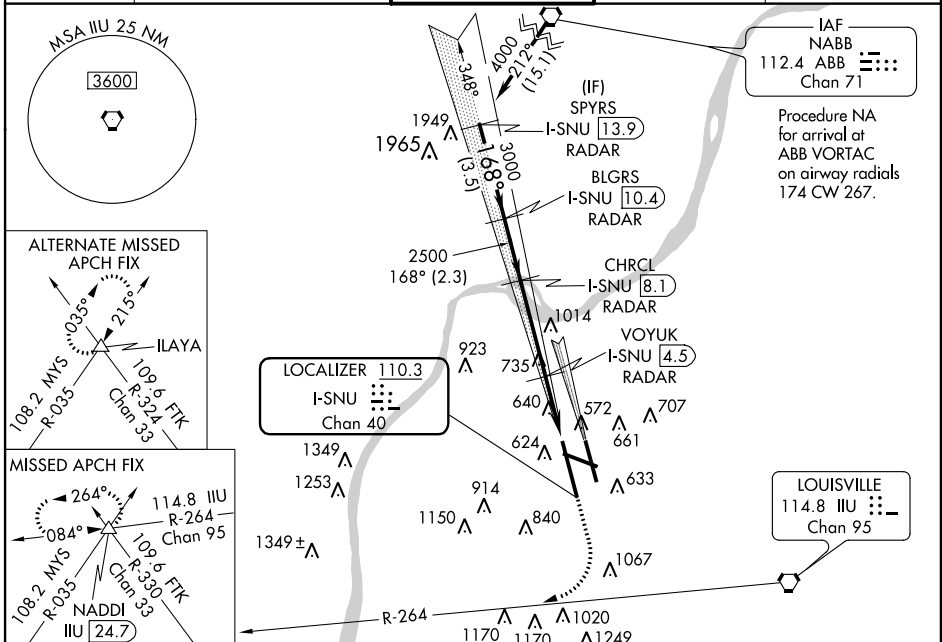
ILS or LOC RWY 17R

LOUISVILLE INTL-STANDIFORD FIELD (SDF)

⚠ DME or RADAR required. Simultaneous approach authorized with Rwy 17L. Circling to Rwy 11 NA at night.

⚠ MISSED APPROACH: Climb to 1600 then climbing right turn to 3000 on ILLU VORTAC R-264 to NADDI INT/ILU 24.7 DME and hold.

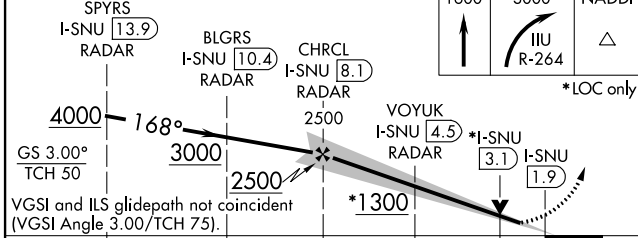
ATIS 118.725	LOUISVILLE APP CON 132.075 327.0 (EAST) 123.675 327.0 (WEST)	LOUISVILLE TOWER 124.2 257.8	GND CON 121.7 348.6	CLNC DEL 126.1 275.8
------------------------	--	--	-------------------------------	--------------------------------



SE-1, 07 FEB 2013 to 07 MAR 2013

SE-1, 07 FEB 2013 to 07 MAR 2013

SPYRS I-SNU 13.9 RADAR	BLGRS I-SNU 10.4 RADAR	CHRCL I-SNU 8.1 RADAR	VOYUK I-SNU 4.5 RADAR	*I-SNU 3.1	*I-SNU 1.9	ELEV 501	THRE 486
------------------------	------------------------	-----------------------	-----------------------	------------	------------	----------	----------



CATEGORY	A	B	C	D
S-ILS 17R	686/18 200 (200-½)			
S-LOC 17R	1300/24 814 (800-½)	1300/40 814 (800-¾)	1300-1 7/8	814 (800-1 7/8)
CIRCLING	1300-1 799 (800-1)	1300-1 ¼ 799 (800-1 ¼)	1300-2 ½	799 (800-2 ½)
VOYUK FIX MINIMUMS				
S-LOC 17R	940/24	454 (500-½)	940/45	454 (500-¾)
CIRCLING	1040-1 539 (600-1)	1140-1 639 (700-1)	1140-1 ¾ 639 (700-1 ¾)	1140-2 639 (700-2)

