

LOC/DME I-PKI <b>111.95</b> Chan <b>56 (Y)</b>	APP CRS <b>168°</b>	Rwy Idg <b>7800</b> THRE <b>499</b> Apt Elev <b>501</b>
--	------------------------	---

# ILS or LOC RWY 17L

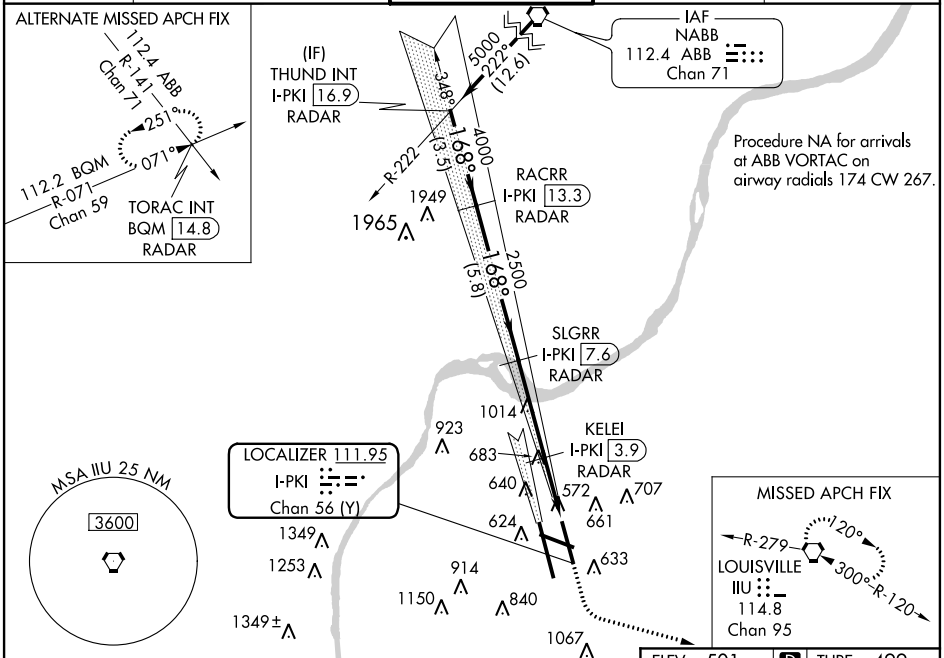
LOUISVILLE INTL-STANDIFORD FIELD (SDF)

**⚠** DME or Radar required. Simultaneous approach authorized with Rwy 17R. Circling to Rwy 11 NA at night.



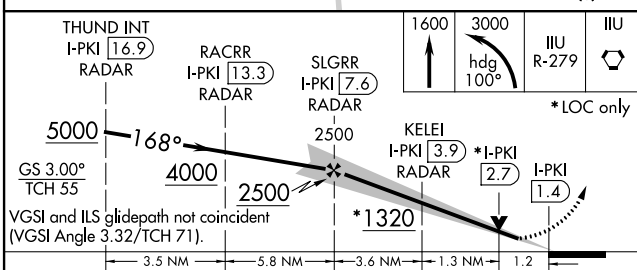
**MISSED APPROACH:** Climb to 1600 then climbing left turn to 3000 via heading 100° and IILU R-279 to IILU VORTAC and hold, continue climb-in-hold to 3000.

ATIS <b>118.725</b>	LOUISVILLE APP CON <b>132.075 327.0 (EAST)</b> <b>123.675 327.0 (WEST)</b>	LOUISVILLE TOWER <b>124.2 257.8</b>	GND CON <b>121.7 348.6</b>	CLNC DEL <b>126.1 275.8</b>
------------------------	--	--	-------------------------------	--------------------------------

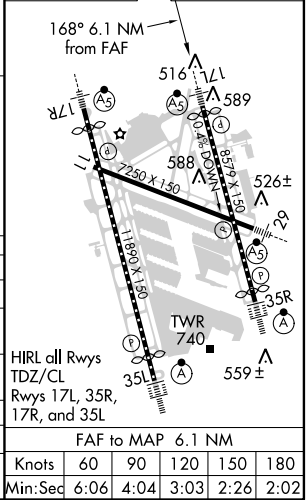


SE-1, 07 FEB 2013 to 07 MAR 2013

SE-1, 07 FEB 2013 to 07 MAR 2013



ELEV 501	<b>D</b> THRE 499
----------	-------------------



CATEGORY	A	B	C	D
S-ILS 17L	699/18		200 (200-½)	
S-LOC 17L	1320/24 821 (900-½)	1320/40 821 (900-¾)	1320-1⅞	821 (900-1⅞)
CIRCLING	1320-1¼	819 (900-1¼)	1320-2½ 819 (900-2½)	1320-2¾ 819 (900-2¾)
KELEI FIX MINIMUMS				
S-LOC 17L	1000/24	501 (500-½)	1000/55	501 (500-1¼)
CIRCLING	1040-1 539 (600-1)	1140-1 639 (700-1)	1140-1¾ 639 (700-¾)	1140-2 639 (700-2)

FAF to MAP 6.1 NM					
Knots	60	90	120	150	180
Min:Sec	6:06	4:04	3:03	2:26	2:02