

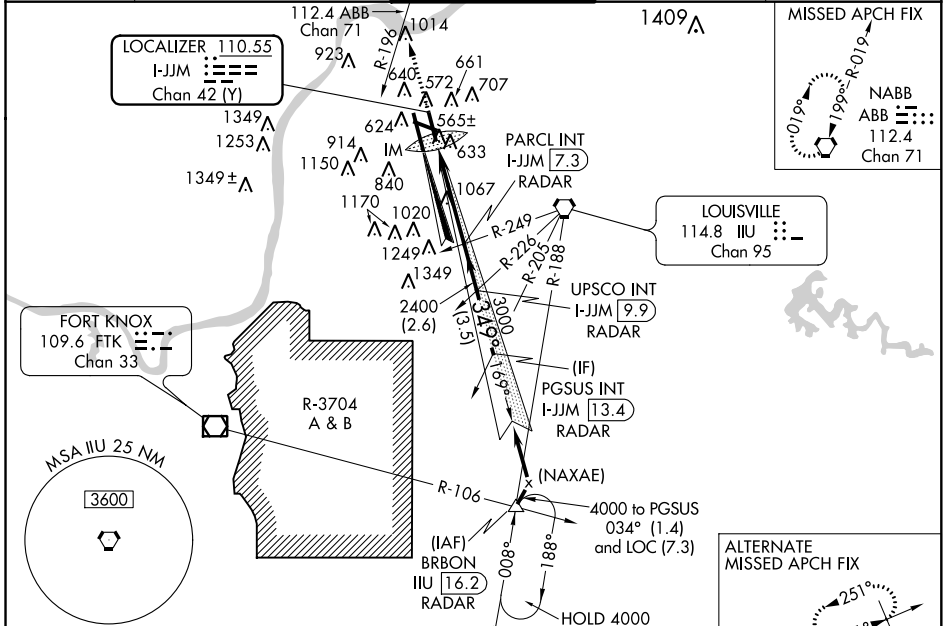
LOC/DME I-JJM <b>110.55</b> Chan <b>42 (Y)</b>	APP CRS <b>349°</b>	Rwy Idg THRE Apt Elev	<b>7800</b> <b>472</b> <b>501</b>
--	------------------------	-----------------------------	---

# ILS RWY 35R (SA CAT I)

LOUISVILLE INTL-STANDIFORD FIELD (SDF')

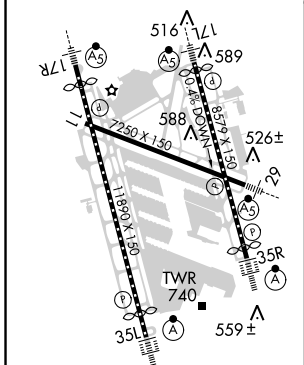
<b>▽</b> Simultaneous approach authorized with Rwy 35L. <b>△</b> Requires specific OPSPEC, MSPEC, or LOA approval and use of HUD to DH.	ALSf-2 	MISSED APPROACH: Climb to 3000 on heading 349° and ABB VORTAC R-196 to ABB VORTAC and hold.
--	------------	---

ATIS <b>118.725</b>	LOUISVILLE APP CON <b>132.075 327.0 (EAST)</b> <b>123.675 327.0 (WEST)</b>	LOUISVILLE TOWER <b>124.2 257.8</b>	GND CON <b>121.7 348.6</b>	CLNC DEL <b>126.1 275.8</b>
------------------------	--	--	-------------------------------	--------------------------------



ELEV 501	<b>D</b> THRE 472
----------	-------------------

Arrival holding not required at BRBON via V5-513 northbound.



CATEGORY	A	B	C	D
S-ILS 35R	RA 162/14 150 DA 622			

**SA CATEGORY I ILS- SPECIAL AIRCREW & AIRCRAFT CERTIFICATION REQUIRED**

HIRL all Rwys  
TDZ/CL Rwys 17L, 17R, 35L, and 35R

SE-1, 07 FEB 2013 to 07 MAR 2013

SE-1, 07 FEB 2013 to 07 MAR 2013