

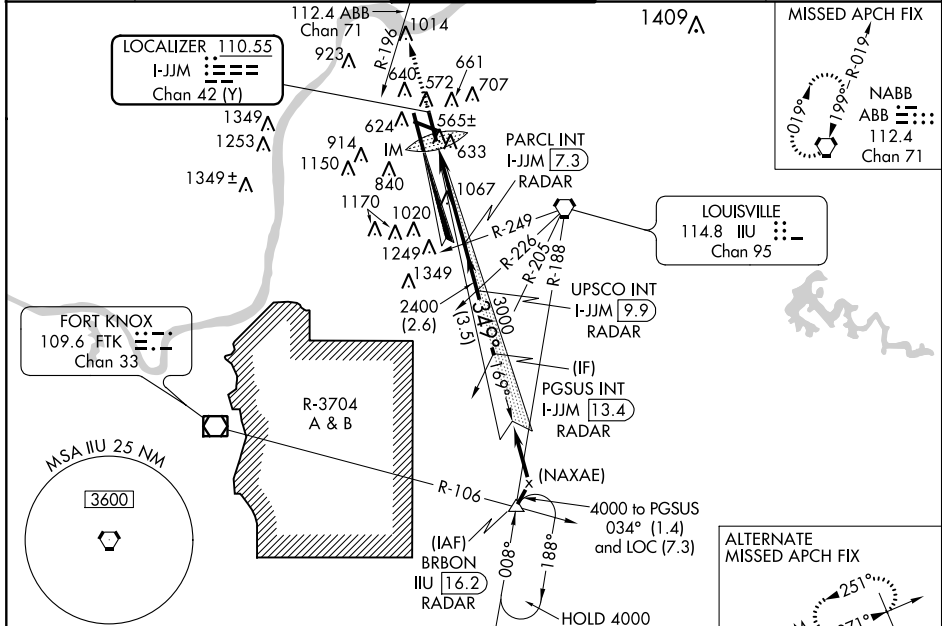
LOC/DME I-JJM 110.55 Chan 42 (Y)	APP CRS 349°	Rwy Idg THRE Apt Elev	7800 472 501
---	------------------------	-----------------------------	---

ILS RWY 35R (CAT III)

LOUISVILLE INTL-STANDIFORD FIELD (SDF)

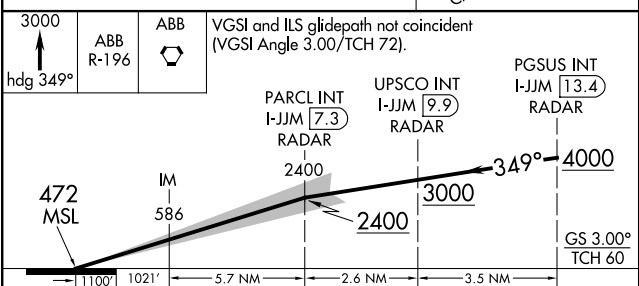
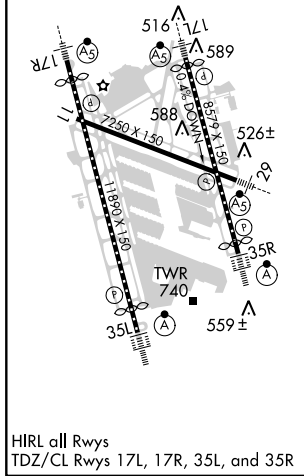
Simultaneous approach authorized with Rwy 35L.	ALSIF-2	MISSED APPROACH: Climb to 3000 on heading 349° and ABB VORTAC R-196 to ABB VORTAC and hold.
--	---------	---

ATIS 118.725	LOUISVILLE APP CON 132.075 327.0 (EAST) 123.675 327.0 (WEST)	LOUISVILLE TOWER 124.2 257.8	GND CON 121.7 348.6	CLNC DEL 126.1 275.8
------------------------	--	--	-------------------------------	--------------------------------



ELEV 501	D THRE 472
----------	-------------------

Arrival holding not required at BRBON via V5-513 northbound.



	PARCL INT I-JJM [7.3] RADAR	UPSCO INT I-JJM [9.9] RADAR	PGSUS INT I-JJM [13.4] RADAR
CATEGORY	A	B	C
S-ILS 35R		CAT IIIa	RVR 07
S-ILS 35R		CAT IIIb	RVR 06
S-ILS 35R		CAT IIIc	NA

CATEGORY III ILS - SPECIAL AIRCREW & AIRCRAFT CERTIFICATION REQUIRED

SE-1, 07 FEB 2013 to 07 MAR 2013

SE-1, 07 FEB 2013 to 07 MAR 2013