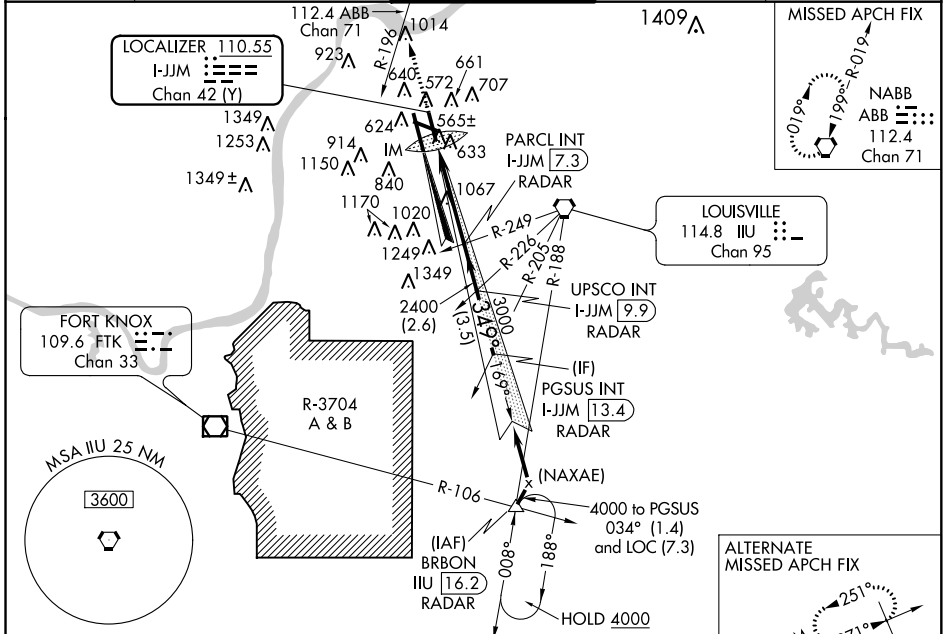


LOC/DME I-JJM 110.55 Chan 42 (Y)	APP CRS 349°	Rwy Idg THRE Apt Elev	7800 472 501
---	------------------------	-----------------------------	---

ILS RWY 35R (CAT II)
LOUISVILLE INTL-STANDIFORD FIELD (SDF)

<p>▽ Simultaneous approach authorized with Rwy 35L. △ RVR 1000 authorized with specific OPSPEC, MSPEC, or LOA approval and use of autoland or HUD to touchdown.</p>	<p>ALSF-2 </p>	<p>MISSED APPROACH: Climb to 3000 on heading 349° and ABB VORTAC R-196 to ABB VORTAC and hold.</p>
---	--------------------	--

<p>ATIS 118.725</p>	<p>LOUISVILLE APP CON 132.075 327.0 (EAST) 123.675 327.0 (WEST)</p>	<p>LOUISVILLE TOWER 124.2 257.8</p>	<p>GND CON 121.7 348.6</p>	<p>CLNC DEL 126.1 275.8</p>
--------------------------------	---	--	---------------------------------------	--



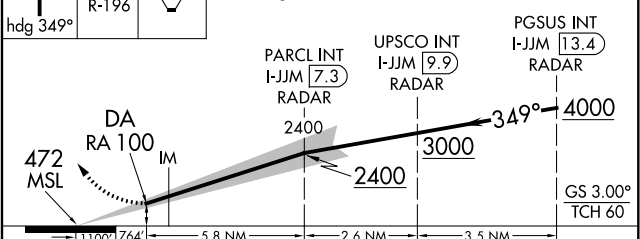
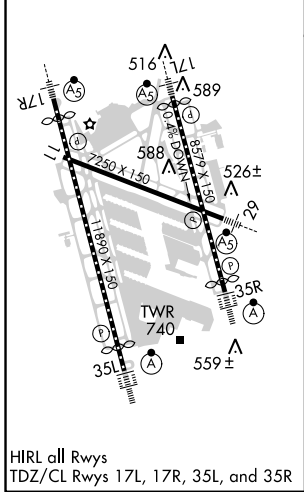
SE-1, 07 FEB 2013 to 07 MAR 2013

SE-1, 07 FEB 2013 to 07 MAR 2013

ELEV 501	D THRE 472
----------	-------------------

Arrival holding not required at BRON via V5-513 northbound.

3000
hdg 349°
ABB R-196
VGS1 and ILS glidepath not coincident (VGS1 Angle 3.00/TCH 72).



CATEGORY	A	B	C	D
S-ILS 35R	RA 100/12 100 DA 572			

CATEGORY II ILS - SPECIAL AIRCREW & AIRCRAFT CERTIFICATION REQUIRED