

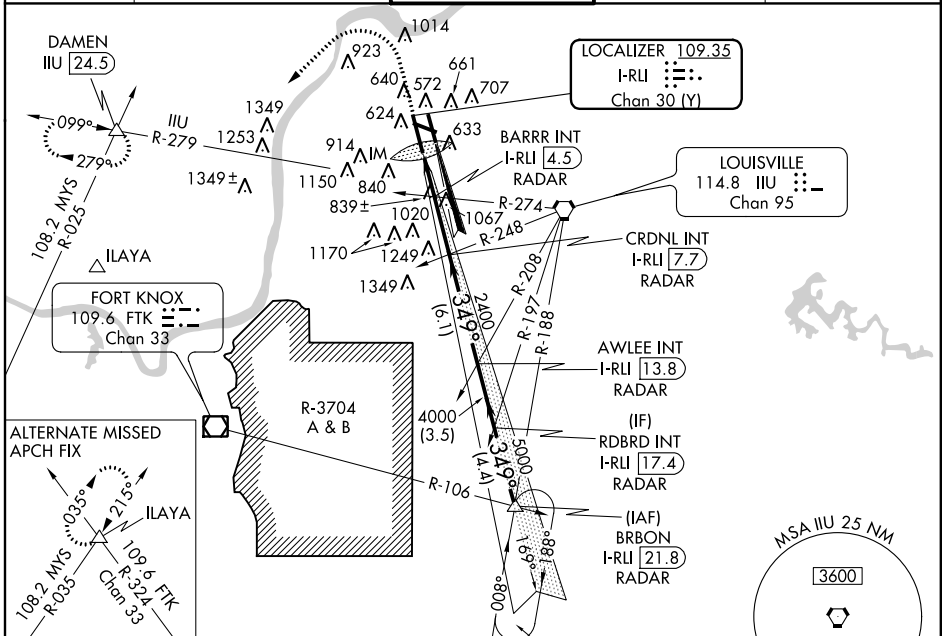
LOC/DME I-RLI 109.35 Chan 30 (Y)	APP CRS 349°	Rwy Idg THRE Apt Elev 10000 461 501
---	------------------------	---

ILS RWY 35L (SA CAT I)

LOUISVILLE INTL-STANDIFORD FIELD (SDF')

<p>Simultaneous approach authorized with Rwy 35R. Requires specific OPSPEC, MSPEC, or LOA approval and use of HUD to DH.</p>	<p>ALSIF-2</p>	<p>MISSED APPROACH: Climb to 1600 then climbing left turn to 3000 on heading 230° and IIU VORTAC R-279 to DAMEN INT/IIU 24.5 DME and hold.</p>
--	----------------	--

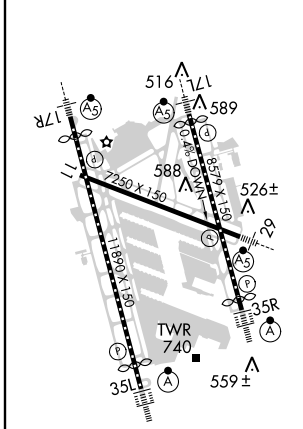
<p>ATIS 118.725</p>	<p>LOUISVILLE APP CON 132.075 327.0 (EAST) 123.675 327.0 (WEST)</p>	<p>LOUISVILLE TOWER 124.2 257.8</p>	<p>GND CON 121.7 348.6</p>	<p>CLNC DEL 126.1 275.8</p>
--------------------------------	---	--	---------------------------------------	--



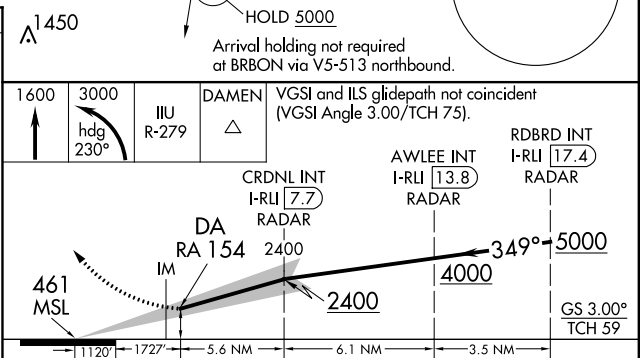
SE-1, 07 FEB 2013 to 07 MAR 2013

SE-1, 07 FEB 2013 to 07 MAR 2013

ELEV 501	D	THRE 461
----------	----------	----------



HIRL all Rwys
TDZ/CL Rwys 17L, 17R, 35L, and 35R



<p>1600 3000 ↑ hdg 230° IIU R-279</p>	<p>DAMEN △</p>	<p>VGSI and ILS glidepath not coincident (VGSI Angle 3.00/TCH 75).</p>	<p>AWLEE INT I-RLI 13.8 RADAR</p>	<p>RBDRD INT I-RLI 17.4 RADAR</p>
<p>CRDNL INT I-RLI 7.7 RADAR</p>	<p>DA RA 154 2400</p>	<p>4000</p>	<p>5000</p>	<p>GS 3.00° TCH 59</p>
<p>CATEGORY A</p>	<p>B</p>	<p>C</p>	<p>D</p>	
<p>S-ILS 35L RA 154/14 150 DA 611</p>				

SA CATEGORY I ILS - SPECIAL AIRCREW & AIRCRAFT CERTIFICATION REQUIRED