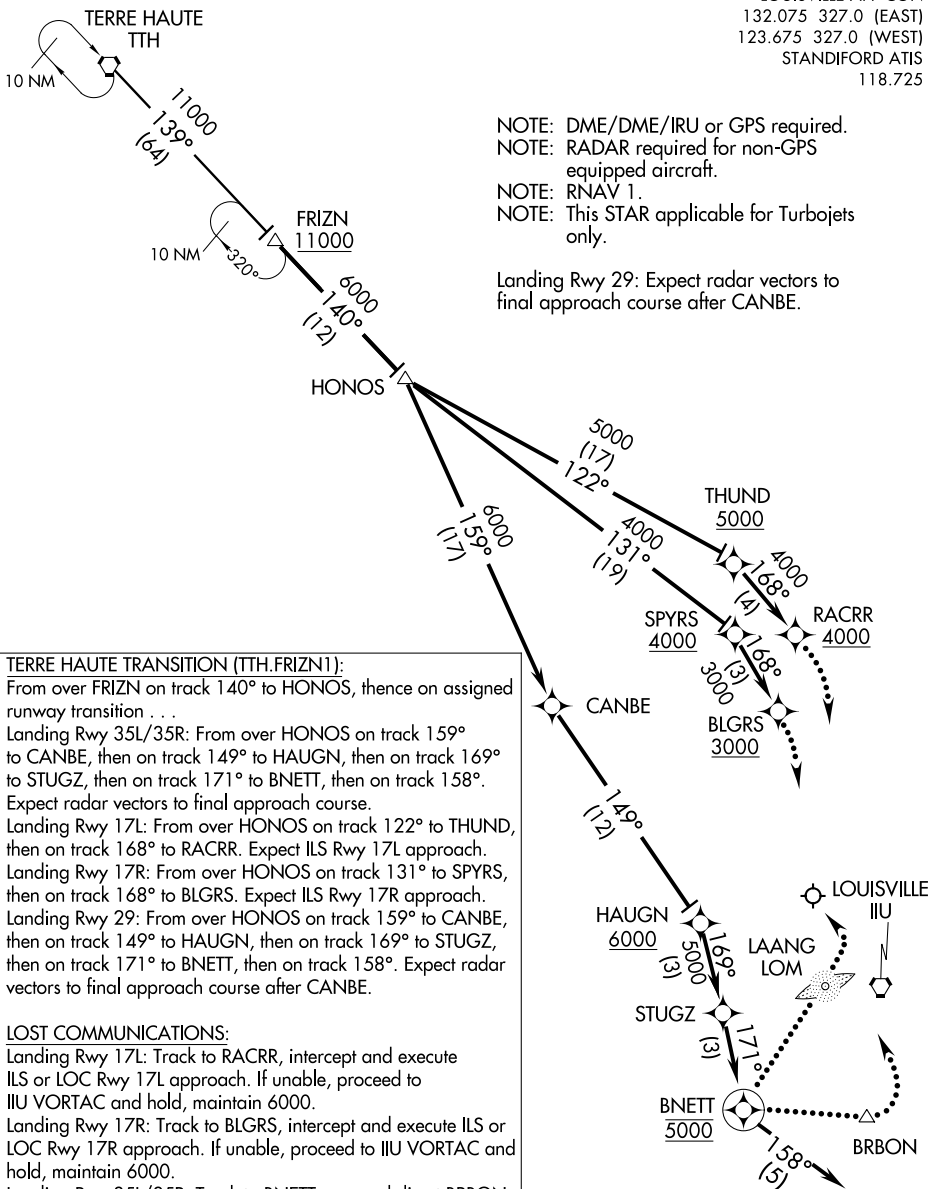


# FRIZN ONE ARRIVAL (RNAV)

LOUISVILLE APP CON  
132.075 327.0 (EAST)  
123.675 327.0 (WEST)  
STANDIFORD ATIS  
118.725

NOTE: DME/DME/IRU or GPS required.  
NOTE: RADAR required for non-GPS equipped aircraft.  
NOTE: RNAV 1.  
NOTE: This STAR applicable for Turbojets only.

Landing Rwy 29: Expect radar vectors to final approach course after CANBE.



**TERRE HAUTE TRANSITION (TTH.FRIZN1):**  
 From over FRIZN on track 140° to HONOS, thence on assigned runway transition . . .  
 Landing Rwy 35L/35R: From over HONOS on track 159° to CANBE, then on track 149° to HAUGN, then on track 169° to STUGZ, then on track 171° to BNETT, then on track 158°.  
 Expect radar vectors to final approach course.  
 Landing Rwy 17L: From over HONOS on track 122° to THUND, then on track 168° to RACRR. Expect ILS Rwy 17L approach.  
 Landing Rwy 17R: From over HONOS on track 131° to SPYRS, then on track 168° to BLGRS. Expect ILS Rwy 17R approach.  
 Landing Rwy 29: From over HONOS on track 159° to CANBE, then on track 149° to HAUGN, then on track 169° to STUGZ, then on track 171° to BNETT, then on track 158°. Expect radar vectors to final approach course after CANBE.

**LOST COMMUNICATIONS:**  
 Landing Rwy 17L: Track to RACRR, intercept and execute ILS or LOC Rwy 17L approach. If unable, proceed to LIU VORTAC and hold, maintain 6000.  
 Landing Rwy 17R: Track to BLGRS, intercept and execute ILS or LOC Rwy 17R approach. If unable, proceed to LIU VORTAC and hold, maintain 6000.  
 Landing Rwy 35L/35R: Track to BNETT; proceed direct BRBON, maintain 5000, execute ILS or LOC Rwy 35L approach, if unable, proceed to LIU VORTAC and hold, maintain 6000.  
 Landing Rwy 29: Track to BNETT; proceed direct LAANG LOM, maintain 5000, execute LOC Rwy 29 approach, if unable proceed to LIU VORTAC and hold, maintain 6000.

NOTE: Chart not to scale.

SE-1, 07 FEB 2013 to 07 MAR 2013

SE-1, 07 FEB 2013 to 07 MAR 2013

# FRIZN ONE ARRIVAL (RNAV)