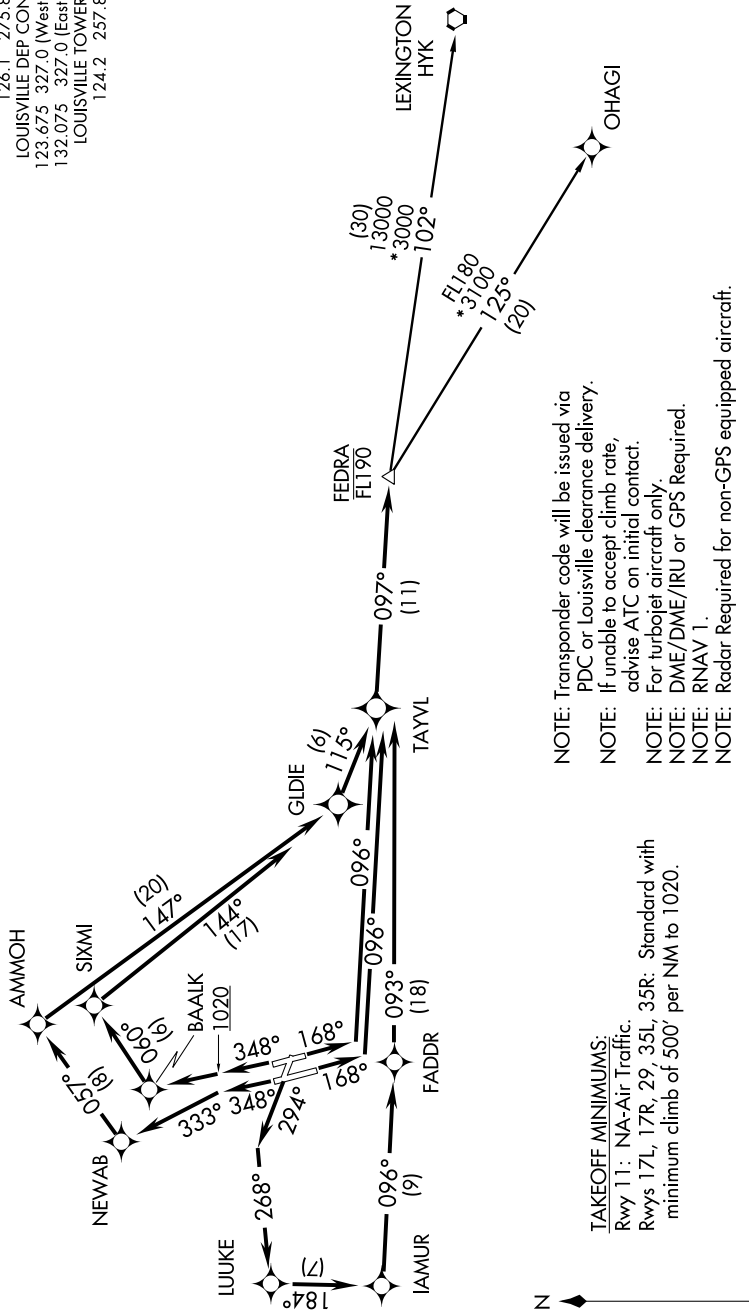


FEDRA ONE DEPARTURE (RNAV)

ATIS 118.725
 GND CON 121.7 348.6
 CLNC DEL 126.1 275.8
 LOUISVILLE DEP CON 123.675 327.0 (West)
 LOUISVILLE TOWER 132.075 327.0 (East)
 124.2 257.8

SE-1, 07 FEB 2013 to 07 MAR 2013



NOTE: Transponder code will be issued via PDC or Louisville clearance delivery.
 NOTE: If unable to accept climb rate, advise ATC on initial contact.
 NOTE: For turbojet aircraft only.
 NOTE: DME/DME/IRU or GPS Required.
 NOTE: RNAV 1.
 NOTE: Radar Required for non-GPS equipped aircraft.

TAKEOFF MINIMUMS:
 Rwy 11: NA-Air Traffic.
 Rwys 17L, 17R, 29, 35L, 35R: Standard with minimum climb of 500' per NM to 1020.

(NARRATIVE ON FOLLOWING PAGE)

NOTE: Chart not to scale.

FEDRA ONE DEPARTURE (RNAV)