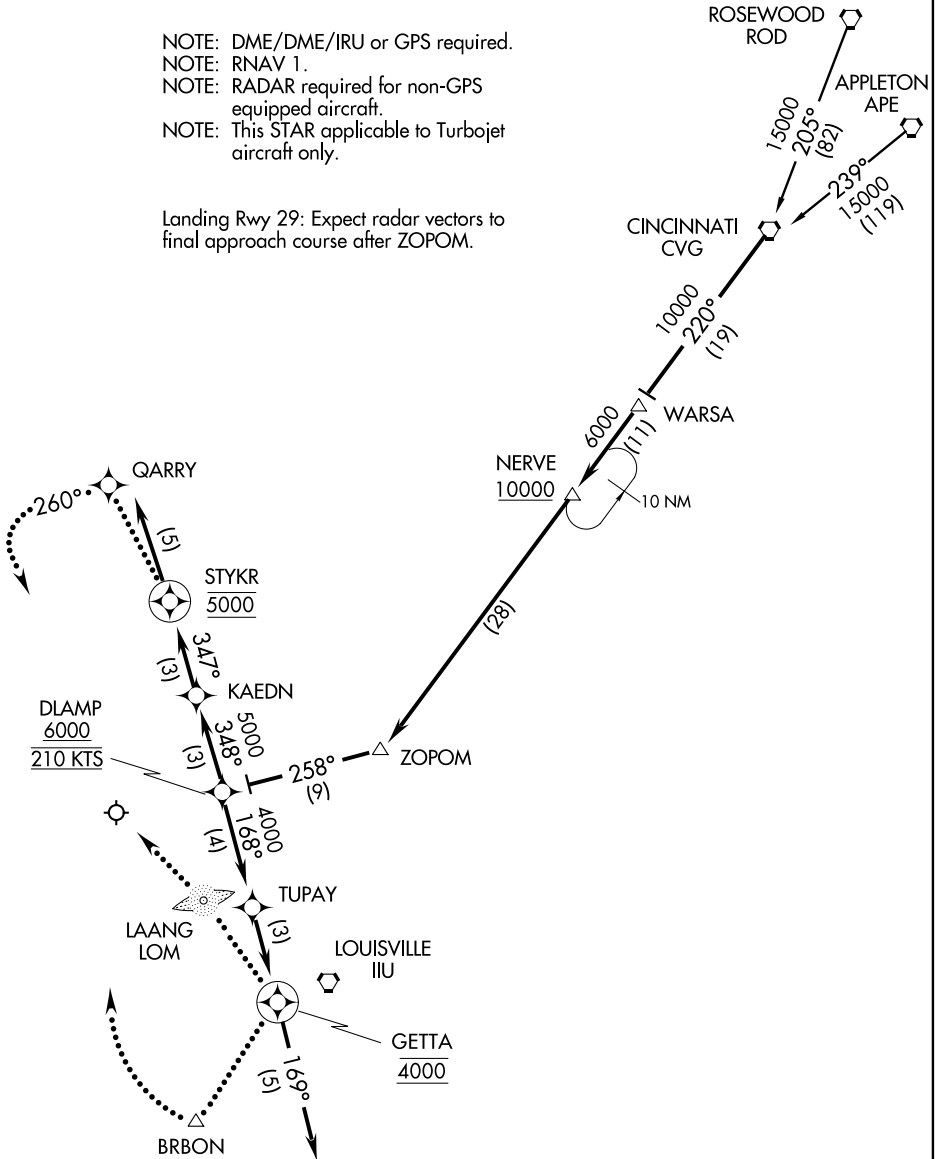


# DLAMP ONE ARRIVAL (RNAV)

LOUISVILLE APP CON  
132.075 327.0 (EAST)  
123.675 327.0 (WEST)  
STANDIFORD ATIS  
118.725

- NOTE: DME/DME/IRU or GPS required.
- NOTE: RNAV 1.
- NOTE: RADAR required for non-GPS equipped aircraft.
- NOTE: This STAR applicable to Turbojet aircraft only.

Landing Rwy 29: Expect radar vectors to final approach course after ZOPOM.



SE-1, 07 FEB 2013 to 07 MAR 2013

SE-1, 07 FEB 2013 to 07 MAR 2013

(NARRATIVE ON FOLLOWING PAGE)

NOTE: Chart not to scale.

# DLAMP ONE ARRIVAL (RNAV)