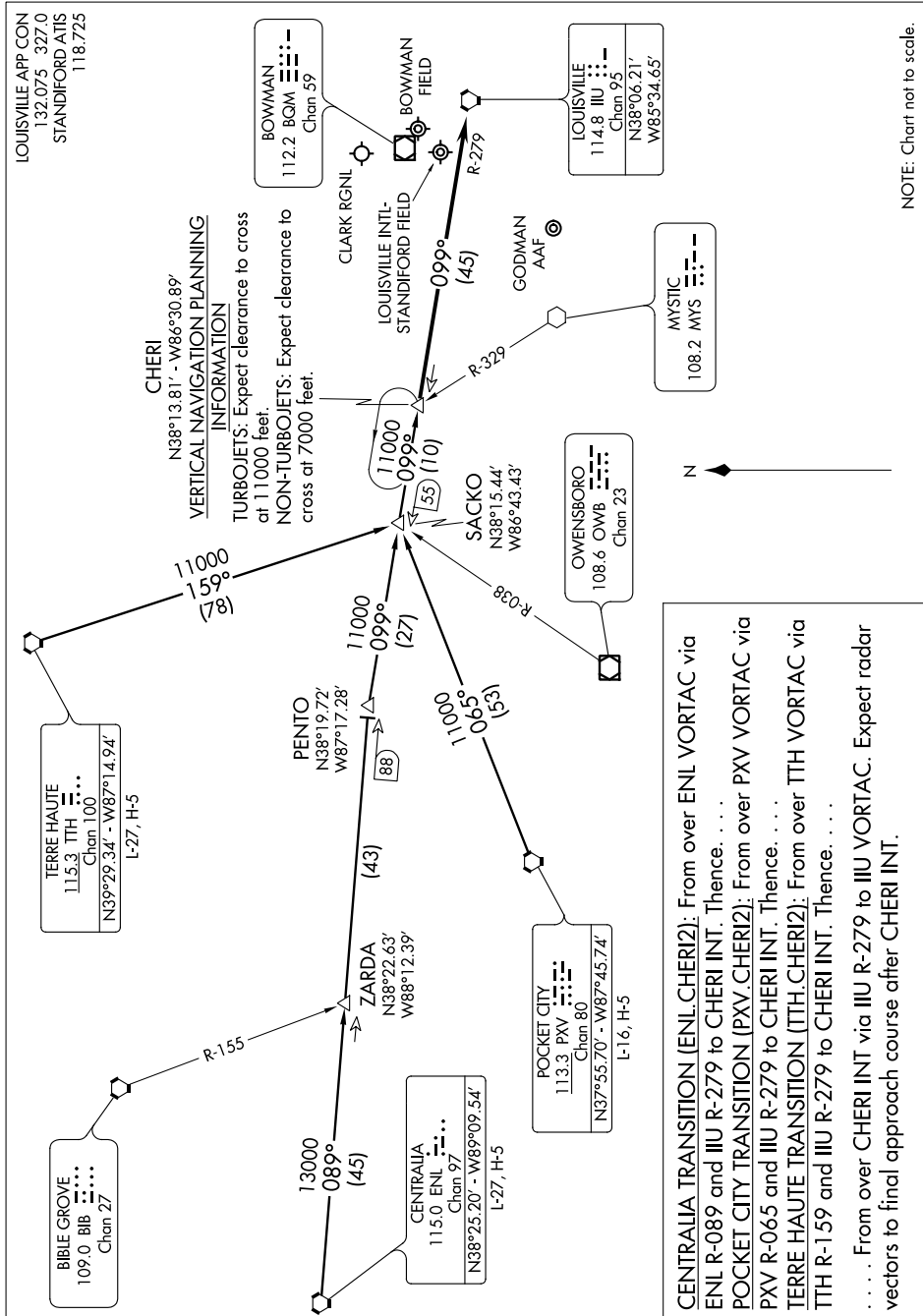


CHERI TWO ARRIVAL (CHERI.CHERI2)

LOUISVILLE, KENTUCKY

SE-1, 07 FEB 2013 to 07 MAR 2013



NOTE: Chart not to scale.

CENTRALIA TRANSITION (ENL.CHERI2): From over ENL VORTAC via ENL R-089 and ILL R-279 to CHERI INT. Thence.

POCKET CITY TRANSITION (PXV.CHERI2): From over PXV VORTAC via PXV R-065 and ILL R-279 to CHERI INT. Thence.

TERRE HAUTE TRANSITION (TTH.CHERI2): From over TTH VORTAC via TTH R-159 and ILL R-279 to CHERI INT. Thence.

. From over CHERI INT via ILL R-279 to ILL VORTAC. Expect radar vectors to final approach course after CHERI INT.

SE-1, 07 FEB 2013 to 07 MAR 2013

CHERI TWO ARRIVAL (CHERI.CHERI2)

LOUISVILLE, KENTUCKY