

APALO ONE DEPARTURE (RNAV)

SL-239 (FAA)

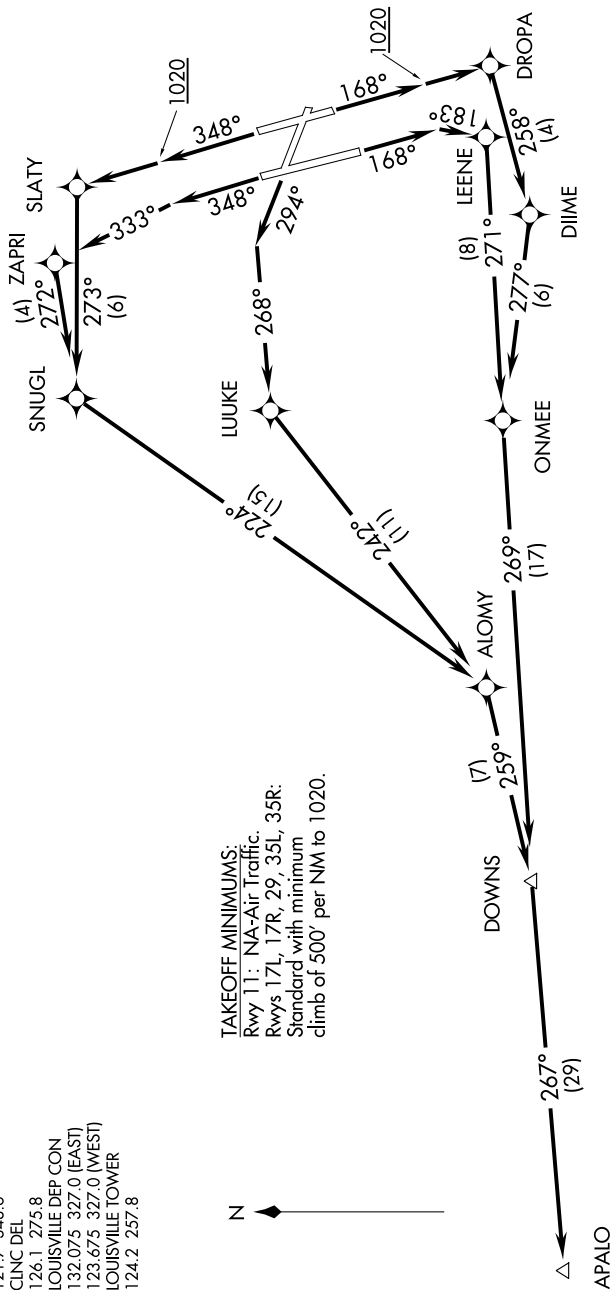
LOUISVILLE, KENTUCKY

SE-1, 07 FEB 2013 to 07 MAR 2013

- ATIS 118.725
- GND CON 121.7 348.6
- CLNC DEL 126.1 275.8
- LOUISVILLE DEP CON 132.075 327.0 (EAST)
- LOUISVILLE TOWER 123.675 327.0 (WEST)
- 124.2 257.8

TAKEOFF MINIMUMS:

Rwy 11: NA-Air Traffic.
 Rwys 17L, 17R, 29, 35L, 35R:
 Standard with minimum
 climb of 500' per NIM to 1020.



- NOTE: Transponder code will be issued via PDC or Louisville clearance delivery.
- NOTE: If unable to accept climb rate, advise ATC on initial contact.
- NOTE: For Turbojet aircraft only.
- NOTE: DME/DME/IRU or GPS required.
- NOTE: RNAV 1.
- NOTE: Radar required for non-GPS equipped aircraft.

(NARRATIVE ON FOLLOWING PAGE)

NOTE: Chart not to scale.

APALO ONE DEPARTURE (RNAV)

SE-1, 07 FEB 2013 to 07 MAR 2013