

WAAS CH 58126 W24A	APP CRS 244°	Rwy Idg THRE 531 Apt Elev 546
--	------------------------	---

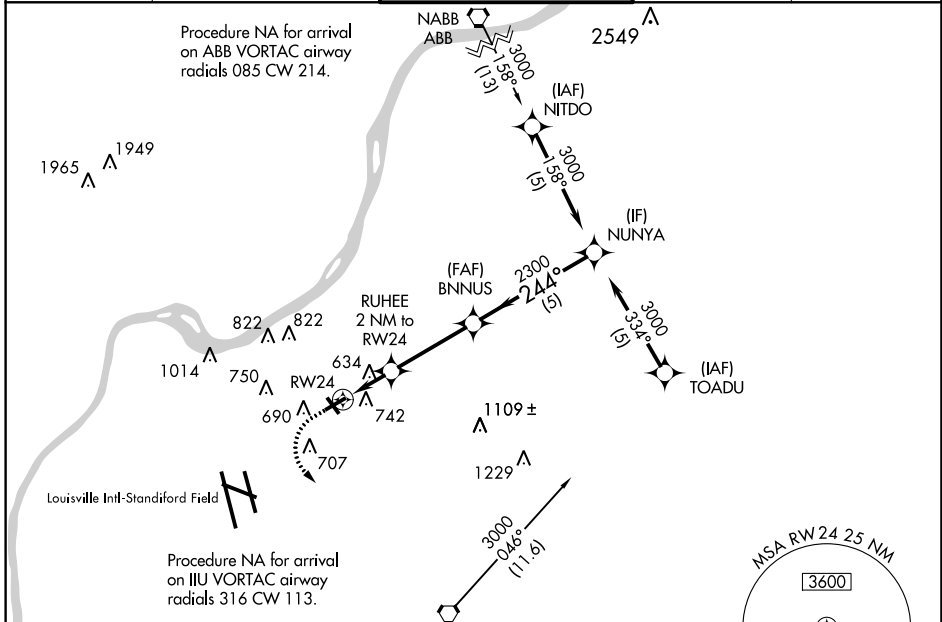
RNAV (GPS) RWY 24

LOUISVILLE/BOWMAN FIELD (LOU)

▼ For uncompensated Baro-VNAV systems, LNAV/VNAV NA below -16°C (4°F) or above 54°C (130°F). DME/DME RNP-0.3 NA. Visibility reduction by helicopters NA. When local altimeter setting not received, use Louisville Intl-Standford Field altimeter setting. Baro-VNAV and VDP NA when using Louisville Intl-Standford Field altimeter setting. When VGSi inop, Circling to Rwy 6 NA at night.

▲ MISSED APPROACH: Climb to 1100 then climbing left turn to 3000 direct CAANT and hold.

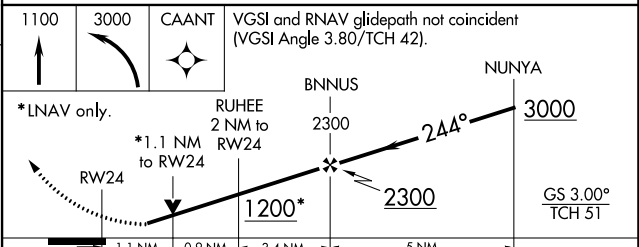
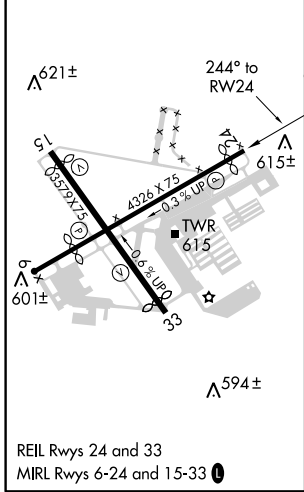
ATIS 118.275	LOUISVILLE APP CON 132.075 327.0	BOWMAN TOWER ★ 119.5 (CTAF) 257.625	GND CON 121.8	CLNC DEL 118.9
------------------------	--	---	-------------------------	--------------------------



SE-1, 07 FEB 2013 to 07 MAR 2013

SE-1, 07 FEB 2013 to 07 MAR 2013

ELEV 546	D THRE 531
----------	-------------------



	1.1 NM	0.9 NM	3.4 NM	5 NM
CATEGORY	A	B	C	D
LPV DA	814-7/8	283 (300-7/8)		NA
LNAV/VNAV DA	884-11/8	353 (400-11/8)		NA
LNAV MDA	1000-1	469 (500-1)		NA
CIRCLING	1060-1	514 (600-1)		NA