

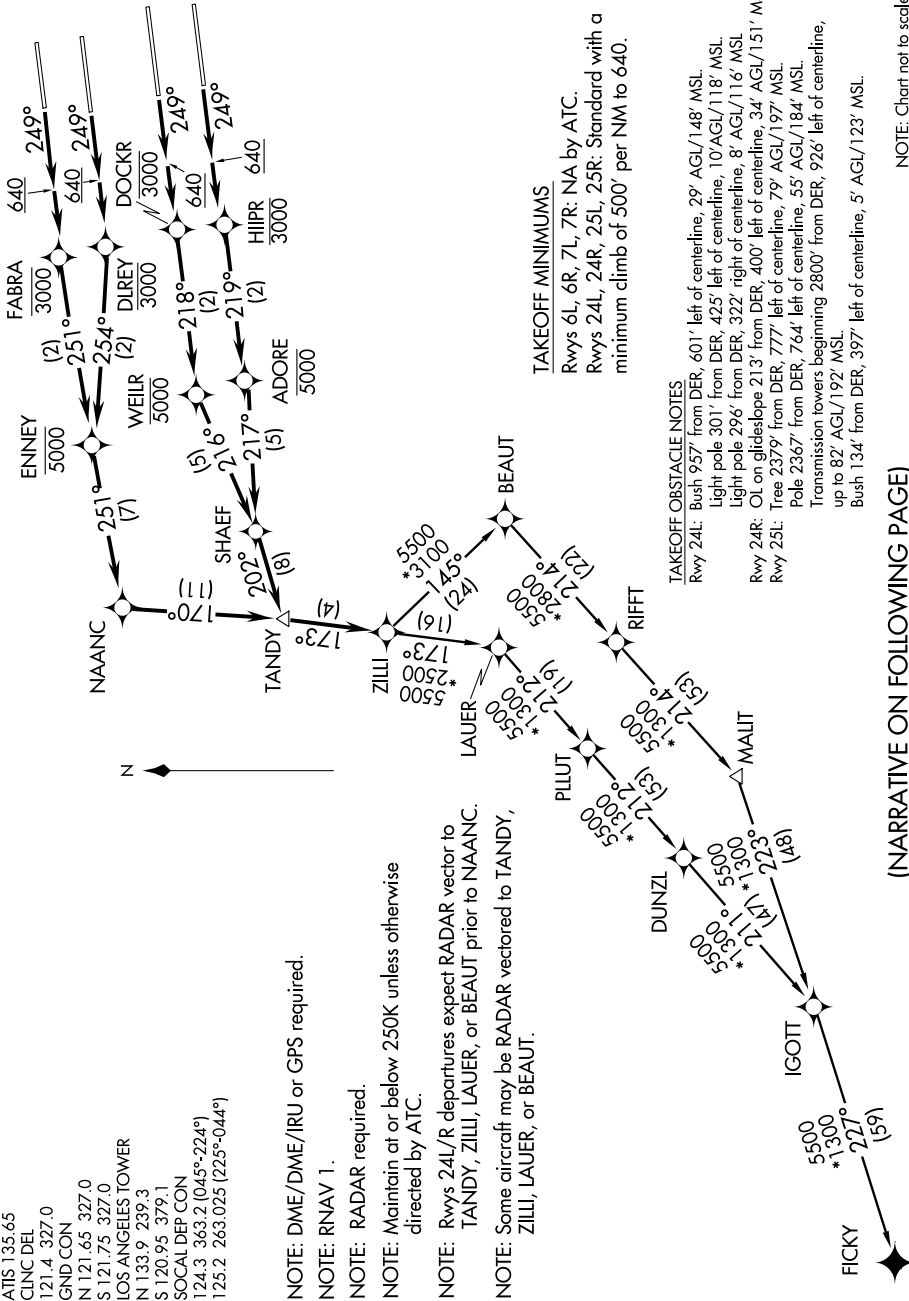
SW-3, 07 FEB 2013 to 07 MAR 2013

- ATIS 135.65
- CLNC DEL 121.4 327.0
- GND CON 121.65 327.0
- S 121.75 327.0
- LOS ANGELES TOWER N 133.9 239.3
- S 120.95 379.1
- SOCAL DEP CON 124.3 363.2 (045°-224°)
- 125.2 263.025 (225°-044°)



NOTE: DME/DME/IRU or GPS required.
 NOTE: RNAV 1.
 NOTE: RADAR required.
 NOTE: Maintain at or below 250K unless otherwise directed by ATC.

NOTE: Rwy 24L/R departures expect RADAR vector to TANDY, ZILLI, LAUER, or BEAUT.
 NOTE: Some aircraft may be RADAR vectored to TANDY, ZILLI, LAUER, or BEAUT.



TAKEOFF MINIMUMS
 Rwy 6L, 6R, 7L, 7R: NA by ATC.
 Rwy 24L, 24R, 25L, 25R: Standard with a minimum climb of 500' per NM to 640.

TAKEOFF OBSTACLE NOTES
 Rwy 24L: Bush 957' from DER, 601' left of centerline, 29' AGL/148' MSL.
 Light pole 301' from DER, 425' left of centerline, 10' AGL/118' MSL.
 Light pole 296' from DER, 322' right of centerline, 8' AGL/116' MSL.
 Rwy 24R: OL on glideslope 213' from DER, 400' left of centerline, 34' AGL/151' MSL.
 Rwy 25L: Trees 2379' from DER, 777' left of centerline, 79' AGL/197' MSL.
 Pole 2367' from DER, 754' left of centerline, 55' AGL/184' MSL.
 Transmission towers beginning 2800' from DER, 926' left of centerline, up to 82' AGL/192' MSL.
 Bush 134' from DER, 397' left of centerline, 5' AGL/123' MSL.

(NARRATIVE ON FOLLOWING PAGE)

NOTE: Chart not to scale.