

WAAS CH 42504 W07A	APP CRS 069°	Rwy Idg 12091 TDZE 126 Apt Elev 126
--	------------------------	--

RNAV (GPS) Y RWY 7L

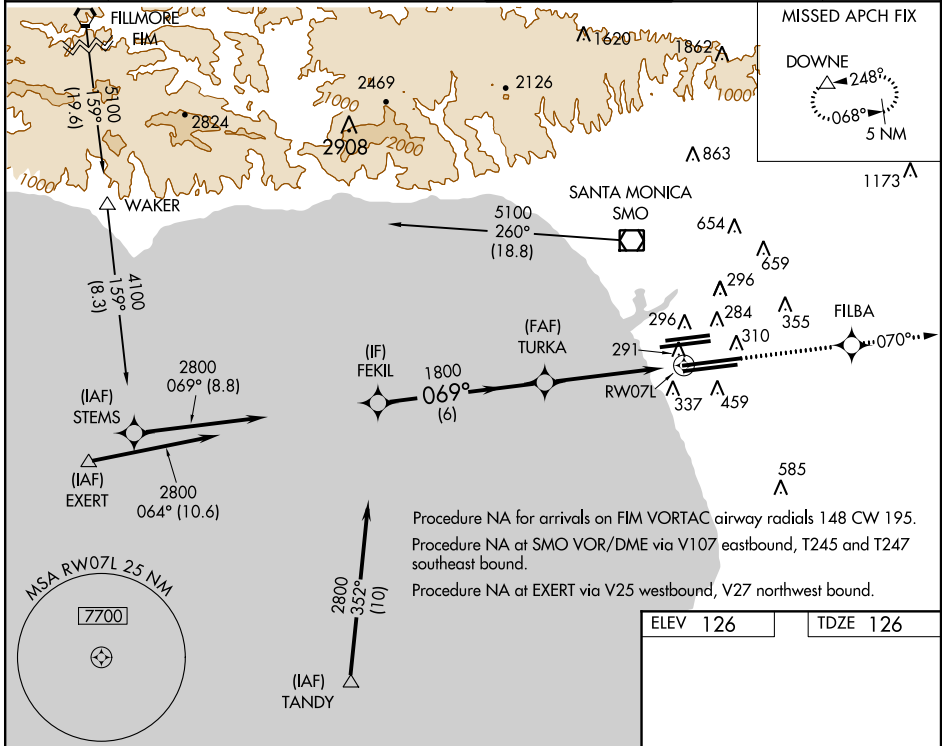
LOS ANGELES INTL (LAX)

V For inoperative MALSRS, increase LPV all Cats visibility to RVR 5000. For uncompensated Baro-VNAV systems, LNAV/VNAV NA below -1.5°C (5°F) or above 48°C (118°F).
W DME/DME RNP -0.3 NA. Simultaneous approach authorized with Rwy 6L/6R. LNAV procedure NA during simultaneous operations. Use of FD or AP providing RNAV track guidance required during simultaneous operations.



MISSED APPROACH:
Climb to 3000 direct
FILBA then via 070° track to
DOWNE and hold.

ATIS ARR 133.8 DEP 135.65	124.3 363.2 (APCH FM WEST) 124.5 235.975 (225°-044°)	SOCAL APP CON 124.9 269.0 (090°-224°) 128.5 360.7 (045°-089°)	LOS ANGELES TOWER N 133.9 239.3 S 120.95 379.1	GND CON N 121.65 327.0 S 121.75 327.0	CLNC DEL 121.4 327.0
---	---	---	--	---	--------------------------------



SW-3, 07 FEB 2013 to 07 MAR 2013

SW-3, 07 FEB 2013 to 07 MAR 2013

GS 3.00° TCH 59	FEKIL	Procedure Turn NA	TURKA	3000	FILBA	tr 070°	DOWNE
	2800		1800		*1.3 NM to RWY07L *LNAV only		
CATEGORY	A	B	C	D			
LPV DA	432/24		306 (400-½)				
LNAV/VNAV DA	582/50		456 (500-1)				
LNAV MDA	600/24	474 (500-½)	600/40	600/50	474 (500-¾) 474 (500-1)		

