

WAAS CH <b>61207</b> <b>W06B</b>	APP CRS <b>069°</b>	Rwy Idg TDZE <b>114</b> Apt Elev <b>126</b>	<b>9954</b>
--	------------------------	---	-------------

# RNAV (GPS) Y RWY 6R

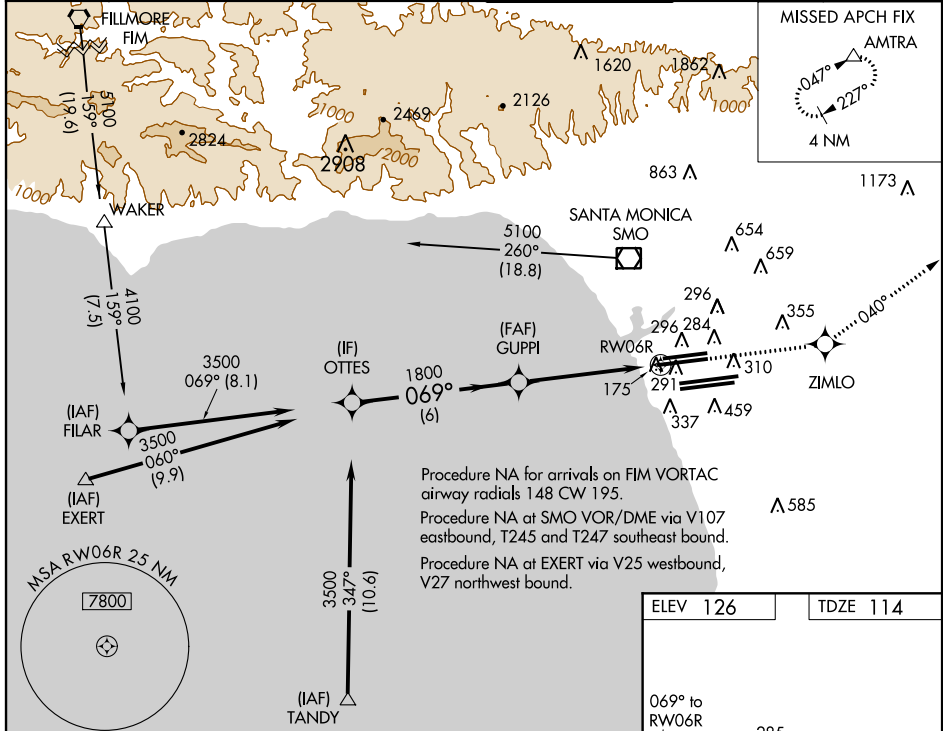
LOS ANGELES INTL (LAX)

**W** For inoperative MALS/R, increase LPV all Cats and LNAV/VNAV Cat D visibility to RVR 5000, and increase LNAV Cat D visibility to RVR 6000. For uncompensated Baro-VNAV systems, LNAV/VNAV NA below -15°C (5°F) or above 48°C (118°F). DME/DME RNP-0.3 NA. Simultaneous approach authorized with Rwy 7L/R. LNAV procedure NA during simultaneous operations. Use of FD or AP providing RNAV track guidance required during simultaneous operations.

**MALS/R**  
AS

**MISSED APPROACH:**  
Climb to 3000 direct ZIMLO and via 040° track to AMTRA and hold.

ATIS ARR <b>133.8</b> DEP <b>135.65</b>	<b>124.3 363.2</b> (APCH FM WEST) <b>124.5 235.975</b> (225°-044°)	SOCAL APP CON	<b>124.9 269.0</b> (090°-224°) <b>128.5 360.7</b> (045°-089°)	<b>LOS ANGELES TOWER</b> N <b>133.9 239.3</b> S <b>120.95 379.1</b>	<b>GND CON</b> N <b>121.65 327.0</b> S <b>121.75 327.0</b>	<b>CLNC DEL</b> <b>121.4 327.0</b>
---	---	---------------	--	---	--	---------------------------------------



SW-3, 07 FEB 2013 to 07 MAR 2013

SW-3, 07 FEB 2013 to 07 MAR 2013

Procedure Turn NA	VGSI and RNAV glidepath not coincident (VGSI Angle 3.00/TCH 78). OTTES	3000	ZIMLO	tr 040°	AMTRA
GS 3.00° TCH 43	3500	GUPPI	*1.1 NM to RWY06R	*LNAV only	
CATEGORY	A	B	C	D	
LPV DA	364/24		250 (300-½)		
LNAV/VNAV DA	425/24		311 (300-½)		425/40 311 (300-¾)
LNAV MDA	520/24		406 (400-½)		520/40 406 (400-¾)
	520/24		406 (400-½)		520/50 406 (400-1)

