

WAAS CH 82507 W06A	APP CRS 069°	Rwy Idg 8925 TDZE 117 Apt Elev 126
----------------------------------------	------------------------	---------------------------------------------------------------

RNAV (GPS) Y RWY 6L

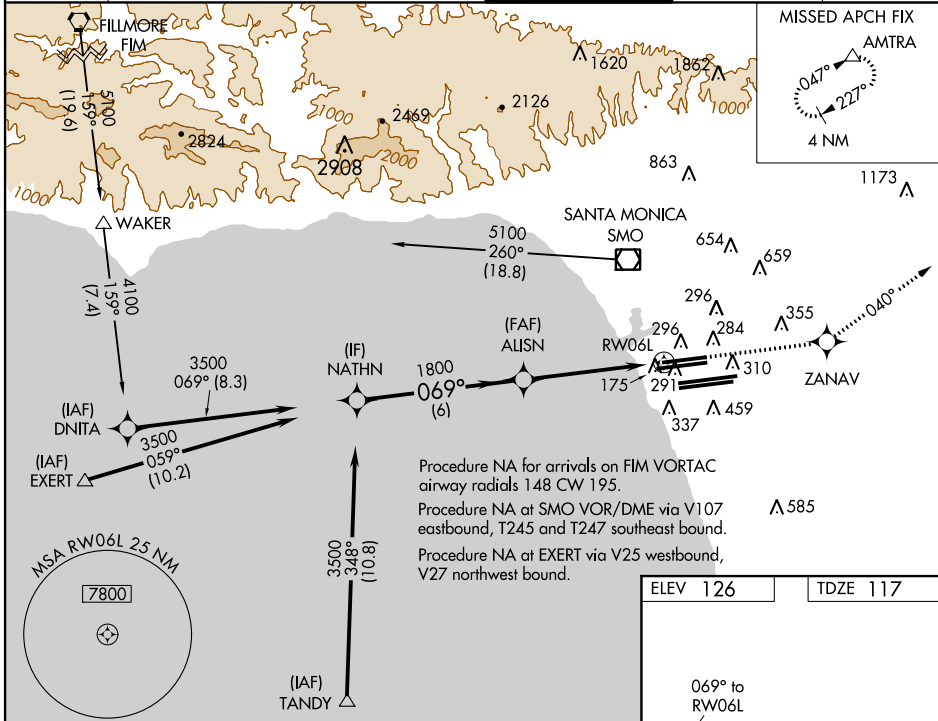
LOS ANGELES INTL (LAX)

W Inoperative table does not apply to LPV, LNAV/VNAV, and LNAV Cat A and B. For inoperative MALS, increase LNAV Cat C and D visibility to RVR 6000. For uncompensated Baro-VNAV systems, LNAV/VNAV NA below -15°C (5°F) or above 48°C (118°F). DME/DME RNP-0.3 NA. Visibility reduction by helicopters NA. Simultaneous approach authorized Rwy 7L/R. LNAV procedure NA during simultaneous operations. Use of FD or AP providing RNAV track guidance required during simultaneous operations.



MISSED APPROACH: Climb to 3000 direct ZANAV and via 040° track to AMTRA and hold.

ATIS ARR 133.8 DEP 135.65	124.3 363.2 (APCH FM WEST) 124.5 235.975 (225°-044°)	SOCAL APP CON 124.9 269.0 128.5 360.7 (045°-089°)	LOS ANGELES TOWER N 133.9 239.3 S 120.95 379.1	GND CON N 121.65 327.0 S 121.75 327.0	CLNC DEL 121.4 327.0
-----------------------------------------------	-----------------------------------------------------------------------------	--------------------------------------------------------------------------	--------------------------------------------------------------------	-----------------------------------------------------------	--------------------------------

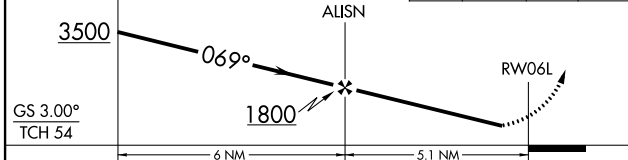


SW-3, 07 FEB 2013 to 07 MAR 2013

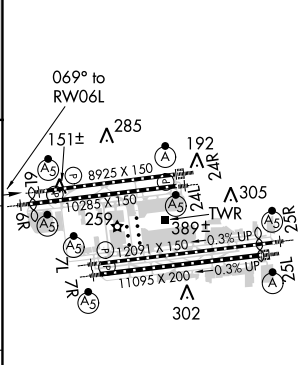
SW-3, 07 FEB 2013 to 07 MAR 2013

Procedure Turn NA
VGS1 and RNAV glidepath not coincident (VGS1 Angle 3.00/TCH 77).
NATHN

3000	ZANAV	tr 040°	AMTRA
------	-------	---------	-------



ELEV 126	TDZE 117
----------	----------



CATEGORY	A	B	C	D
LPV DA		390/50	273 (300-1)	
LNAV/VNAV DA		441/50	324 (400-1)	
LNAV MDA		540/50	423 (500-1)	

TDZ/CL Rwy 6R, 7L, 24R, and 25L
HIRL all Rwy