

WAAS CH 53507 W25A	APP CRS 249°	Rwy Idg 11095 THRE 98 Apt Elev 126
---------------------------------	------------------------	---

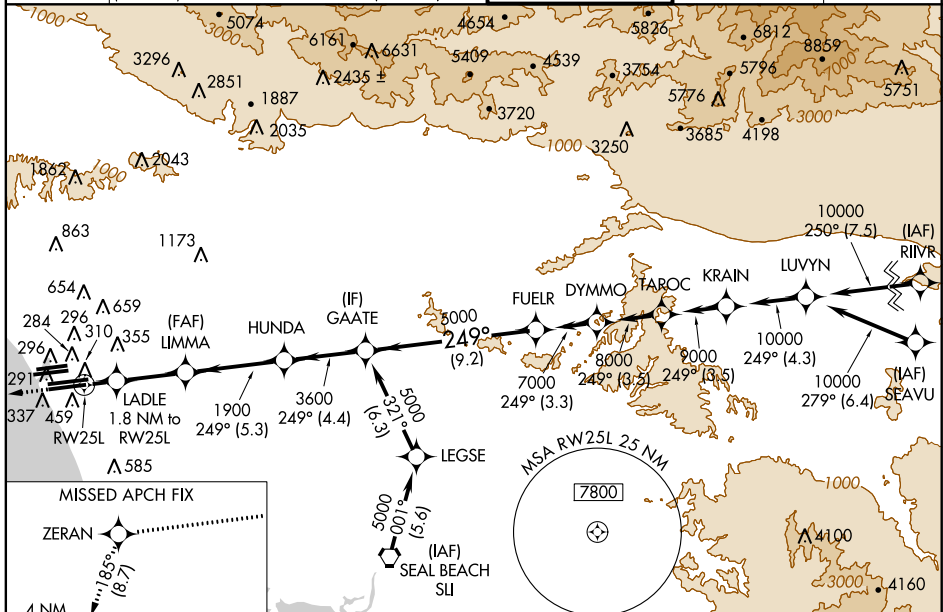
RNAV (GPS) Y RWY 25L

LOS ANGELES INTL (LAX)

▼ For uncompensated Baro-VNAV systems, LNAV/VNAV NA below -15°C (5°F) or above 43°C (109°F). DME/DME RNP-0.3 NA. For inoperative ALSF-2, increase LPV all Cats visibility to RVR 4500, increase LNAV/VNAV all Cats visibility to 1½, and increase LNAV Cats C and D visibility to 1¾.

ALSF-2
MISSED APPROACH: Climb to 2000 direct ZERAN and on track 185° to CATLY and hold.

ATIS ARR 133.8 DEP 135.65	124.3 363.2 (ARCFM WEST) 124.5 235.975 (225°-044°)	SOCAL APP CON 124.9 269.0 (039°-224°) 128.5 360.7 (045°-089°)	LOS ANGELES TOWER N 133.9 239.3 S 120.95 379.1	GND CON N 121.65 327.0 S 121.75 327.0	CLNC DEL 121.4 327.0
---	---	---	--	---	--------------------------------



SW-3, 07 FEB 2013 to 07 MAR 2013

SW-3, 07 FEB 2013 to 07 MAR 2013

Procedure NA for arrivals on SLI VORTAC airway radials 251 CW 080.

2000	ZERAN	tr 185°	CATLY	FUEL
*LNAV only				
LADLE 1.8 NM to RW25L	LIMMA 1900	HUNDA 3600	GAATE 5000	FUEL 7000
1.8	3.7 NM	5.3 NM	4.4 NM	9.2 NM
CATEGORY	A	B	C	D
LPV DA	359/24 261 (300-½)			
LNAV/VNAV DA	569/60 471 (500-1¼)			
LNAV MDA	640/24	542 (600-½)	640/60	542 (600-1¼)

ELEV 126	THRE 98
----------	---------

249° to RWY 25L