

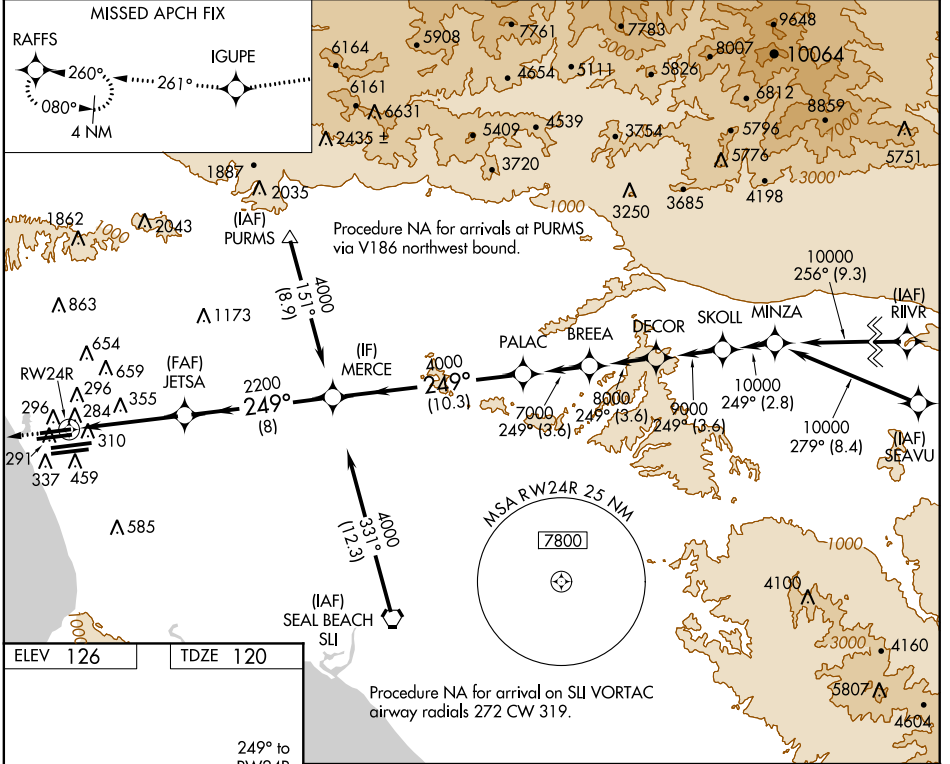
RNAV (GPS) Y RWY 24R

LOS ANGELES INTL (LAX)

WAAS CH 69307 W24A	APP CRS 249°	Rwy Idg TDZE Apt Elev	8925 120 126
--	------------------------	-----------------------------	---

DME/DME RNP-0.3 NA. For uncompensated Baro-VNAV systems, LNAV/VNAV NA below -15°C (5°F) or above 49°C (120°F).	ALSF-2	MISSED APPROACH: Climb to 2000 direct IGUPE and via 261° track to RAFFS and hold.
---	--------	---

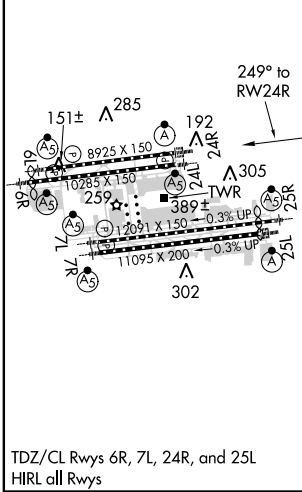
ATIS ARR 133.8 DEP 135.65	124.3 363.2 (ARCP FM WEST) 124.5 235.975 (225°-044°)	SOCAL APP CON 124.9 269.0 (090°-224°) 128.5 360.7 (045°-089°)	LOS ANGELES TOWER N 133.9 239.3 S 120.95 379.1	GND CON N 121.65 327.0 S 121.75 327.0	CLNC DEL 121.4 327.0
---	---	---	--	---	--------------------------------



SW-3, 07 FEB 2013 to 07 MAR 2013

SW-3, 07 FEB 2013 to 07 MAR 2013

ELEV 126	TDZE 120
----------	----------



2000	IGUPE	tr 261°	RAFFS	VGSI and RNAV glidepath not coincident (VGSI Angle 3.00/TCH 73).	PALAC
*INAV only		*1.5 NM to RW24R	JETSA	MERCE	7000
RW24R		JETSA	MERCE	4000	Procedure Turn NA
1.5 NM		4.8 NM	8 NM	10.3 NM	GS 3.00° TCH 59'
CATEGORY	A	B	C	D	
LPV DA		374/24	254 (300-1/2)		
LNAV/VNAV DA		604/60	484 (500-1 1/4)		
LNAV MDA	660/24	540 (600-1/2)	660/50 540 (600-1)	660/60 540 (600-1 1/4)	