

WAAS CH 56407 W24B	APP CRS 249°	Rwy Idg 10285 THRE 111 Apt Elev 126
---------------------------------	------------------------	--

RNAV (GPS) Y RWY 24L

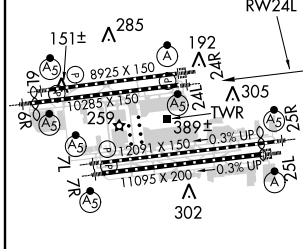
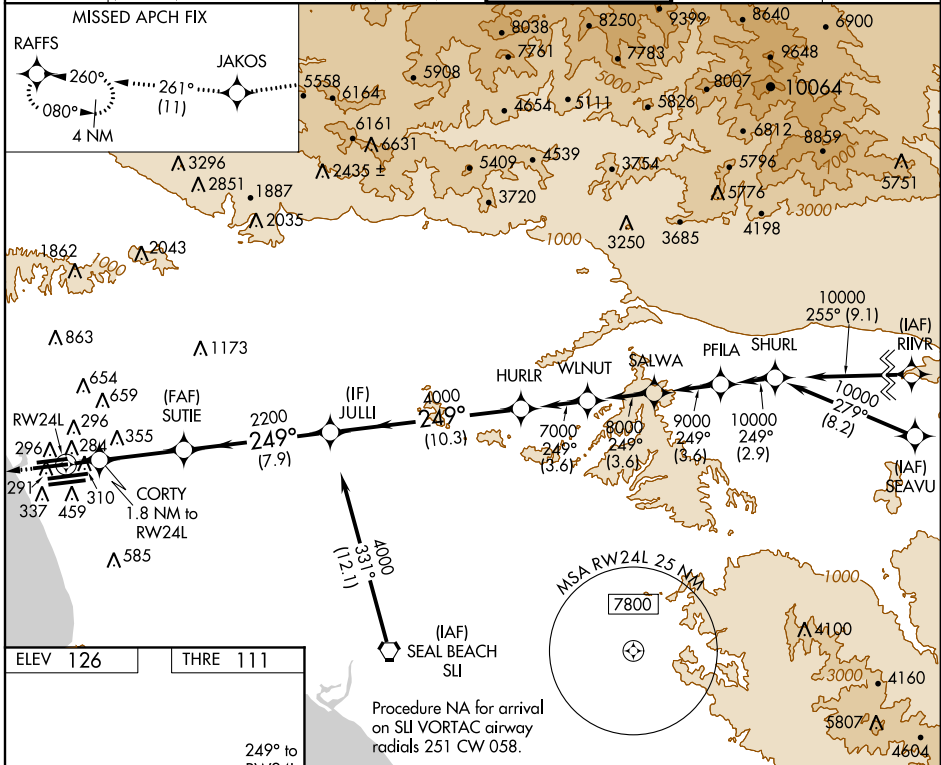
LOS ANGELES INTL (LAX)

▼ For uncompensated Baro-VNAV systems, LNAV/VNAV NA below -15°C (5°F) or above 42°C (107°F). DME/DME RNP-0.3 NA. For inoperative MALS, increase LPV all Cats visibility to RVR 6000.



MISSED APPROACH: Climb to 2000 direct JAKOS and on track 261° to RAFFS and hold.

ATIS ARR 133.8 DEP 135.65	124.3 363.2 (APCH FM WEST) 124.5 235.975 (225°-044°)	SOCAL APP CON 124.9 269.0 (090°-224°) 128.5 360.7 (045°-089°)	LOS ANGELES TOWER N 133.9 239.3 S 120.95 379.1	GND CON N 121.65 327.0 S 121.75 327.0	CLNC DEL 121.4 327.0
---	---	---	--	---	--------------------------------



ELEV 126	THRE 111	2000	JAKOS	tr 261°	RAFFS	VGSI and RNAV glidepath not coincident (VGSI Angle 3.00°/TCH 79).	HURLR
		*INAV only		SUTIE	JULLI	7000	
		RWY 24L		CORTY 1.8 NM to RWY 24L	2200	4000	GS 3.00° TCH 59
		1.8 NM		4.6 NM		7.9 NM	
		740*		2200			
		1.8 NM		4.6 NM		7.9 NM	

CATEGORY	A	B	C	D
LPV DA		459/30	348 (400-¾)	
LNAV/VNAV DA		596/60	485 (500-1¼)	
LNAV MDA	660/24	549 (600-½)	660/60	549 (600-1¼)

SW-3, 07 FEB 2013 to 07 MAR 2013

SW-3, 07 FEB 2013 to 07 MAR 2013