

APP CRS <b>069°</b>	Rwy Idg <b>11095</b>
	TDZE <b>125</b>
	Apt Elev <b>126</b>

# RNAV (RNP) Z RWY 7R

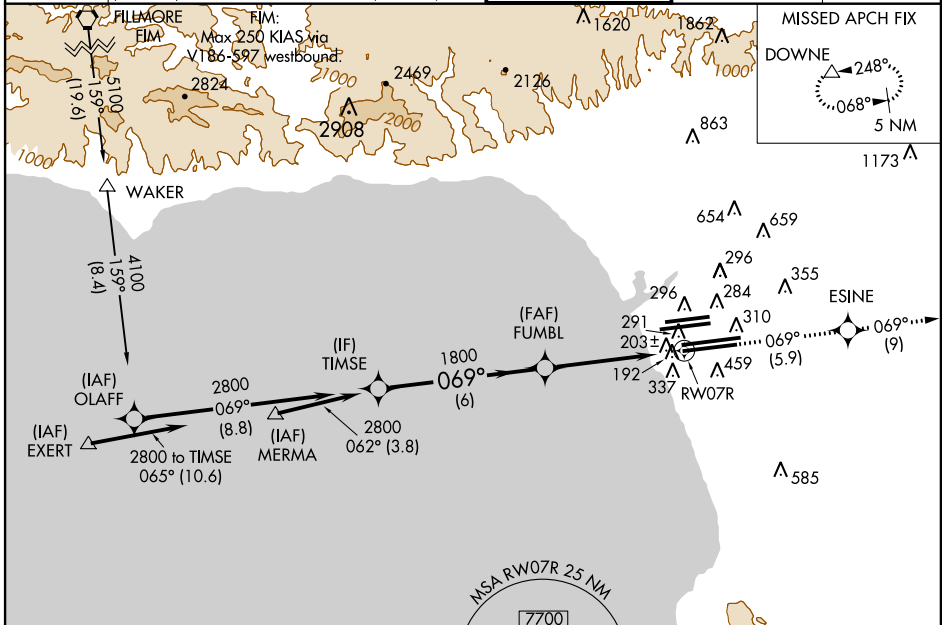
LOS ANGELES INTL (LAX)

**NA** For inoperative MALSR, increase RNP 0.12 visibility to RVR 5000 all Cats, and RNP 0.30 visibility to RVR 6000 all Cats. For uncompensated Baro-VNAV systems, procedure NA below 5°C (41°F) or above 48°C (119°F). GPS required. Simultaneous approach authorized with Rwy 6L/R. Use of FD or AP providing RNAV track guidance required during simultaneous operations.



**MISSED APPROACH:** Climb to 3000 via 069° track to ESINE and 069° track to DOWNE and hold.

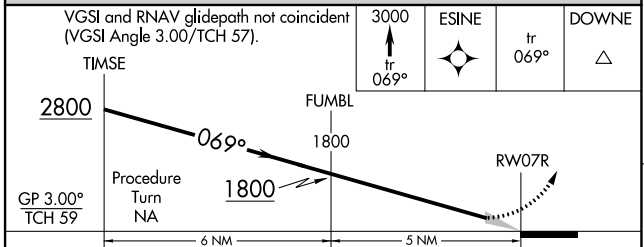
ATIS ARR <b>133.8</b> DEP <b>135.65</b>	<b>124.3 363.2</b> (APCH FM WEST)	SOCAL APP CON <b>124.5 235.975</b> (225°-044°)	<b>124.9 269.0</b> (090°-224°)	LOS ANGELES TOWER <b>N 133.9 239.3</b> <b>S 120.95 379.1</b>	GND CON <b>N 121.65 327.0</b> <b>S 121.75 327.0</b>	CLNC DEL <b>121.4 327.0</b>
---	--------------------------------------	--	-----------------------------------	--	---	--------------------------------



SW-3, 07 FEB 2013 to 07 MAR 2013

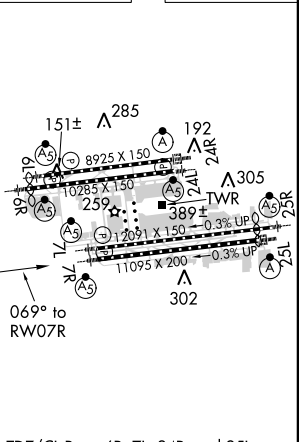
SW-3, 07 FEB 2013 to 07 MAR 2013

Procedure NA for arrivals on FIM VORTAC airway radials 148 CW 195.  
 Procedure NA for arrivals at EXERT via V25 westbound, V27 northwest bound.  
 Procedure NA for arrivals at MERMA via V25 westbound.



CATEGORY	A	B	C	D
RNP 0.12 DA		418/24	293 (300-½)	
RNP 0.30 DA		483/40	358 (400-¾)	

ELEV 126	TDZE 125
----------	----------



TDZ/CL Rwy 6R, 7L, 24R, and 25L  
 HIRL all Rwy's

## AUTHORIZATION REQUIRED