

| | | |
|-------------|----------|-------------|
| APP CRS | Rwy Idg | 9954 |
| 069° | TDZE | 114 |
| | Apt Elev | 126 |

RNAV (RNP) Z RWY 6R

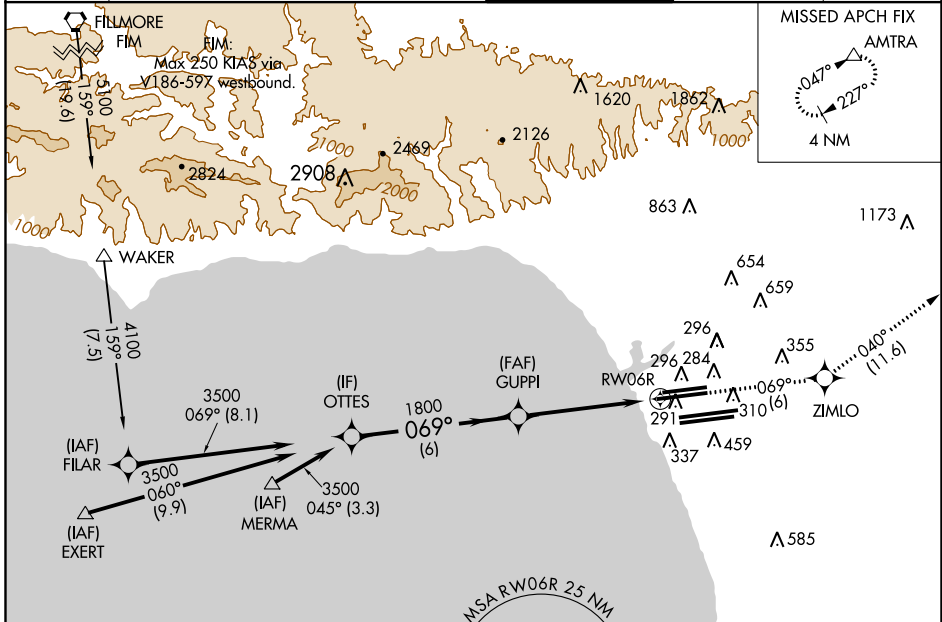
LOS ANGELES INTL (LAX)

NA GPS required. For uncompensated Baro-VNAV systems, procedure NA below 5°C (41°F), or above 48°C (119°F). For inoperative MALS/R, increase RNP 0.30 visibility to RVR 5000 all Cats. Simultaneous approach authorized Rwy 7L/R. Use of FD or AP providing RNAV track guidance required during simultaneous operations.

MALS/R

MISSED APPROACH: Climb to 3000 via 069° track to ZIMLO and via 040° track to AMTRA and hold.

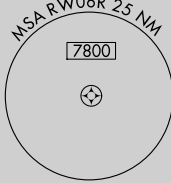
| | | | | | | | | | |
|------|--------------------|----------------------|--------------------|--------------------|-----------------------|-----------------------|-----------------------|----------|--------------------|
| ATIS | 124.3 363.2 | SOCAL APP CON | 124.9 269.0 | LOS ANGELES TOWER | N 133.9 239.3 | GND CON | N 121.65 327.0 | CLNC DEL | 121.4 327.0 |
| ARR | 133.8 | (APCH FM WEST) | | (090°-224°) | | | | | |
| DEP | 135.65 | 124.5 235.975 | | 128.5 360.7 | S 120.95 379.1 | S 121.75 327.0 | | | |
| | | (225°-044°) | | (045°-089°) | | | | | |



SW-3, 07 FEB 2013 to 07 MAR 2013

SW-3, 07 FEB 2013 to 07 MAR 2013

Procedure NA for arrivals on FIM VORTAC airway radials 148 CW 195.
 Procedure NA for arrivals at EXERT via V25 westbound, V27 northwest bound.
 Procedure NA for arrivals at MERMA via V25 westbound.



| | |
|----------|----------|
| ELEV 126 | TDZE 114 |
|----------|----------|

Procedure VGSi and RNAV glidepath not coincident (VGSi Angle 3.00/TCH 78).
 Turn NA OTTES

3000

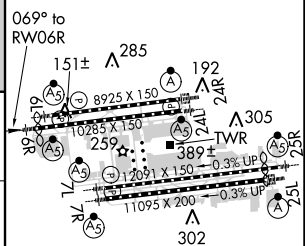
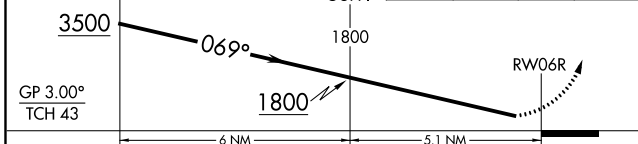
ZIMLO

tr 040°

AMTRA

GUPTI

069°



| | | | | |
|-------------|---|--------|-------------|---|
| CATEGORY | A | B | C | D |
| RNP 0.30 DA | | 413/40 | 299 (300-¾) | |

AUTHORIZATION REQUIRED

TDZ/CL Rwy 6R, 7L, 24R, and 25L
 HIRL all Rwy's