

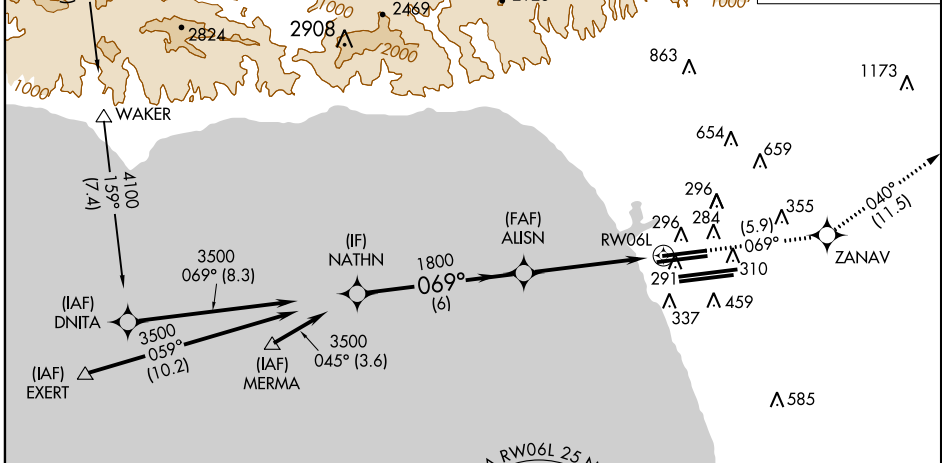
APP CRS	Rwy Idg	8925
069°	TDZE	117
	Apt Elev	126

RNAV (RNP) Z RWY 6L

LOS ANGELES INTL (LAX)

<p>NA</p> <p>GPS required. For uncompensated Baro-VNAV systems, procedure NA below 5°C (41°F), or above 48°C (119°F). Inoperative table does not apply. Simultaneous approach authorized Rwy 7L/R. Use of FD or AP providing RNAV track guidance required during simultaneous operations.</p>	<p>MAISLR</p>	<p>MISSED APPROACH: Climb to 3000 via 069° track to ZANAV and via 040° track to AMTRA and hold.</p>

<p>ATIS</p> <p>ARR 133.8</p> <p>DEP 135.65</p>	<p>124.3 363.2</p> <p>(APCH FM WEST)</p> <p>124.5 235.975</p> <p>(225°-044°)</p>	<p>SOCAL APP CON</p> <p>124.9 269.0</p> <p>(090°-224°)</p> <p>128.5 360.7</p> <p>(045°-089°)</p>	<p>LOS ANGELES TOWER</p> <p>N 133.9 239.3</p> <p>S 120.95 379.1</p>	<p>GND CON</p> <p>N 121.65 327.0</p> <p>S 121.75 327.0</p>	<p>CLNC DEL</p> <p>121.4 327.0</p>
--	--	--	---	--	---

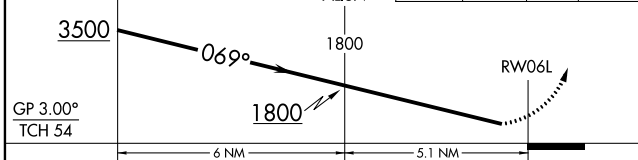


Procedure NA for arrivals on FIM VORTAC airway radials 148 CW 195.

Procedure NA for arrivals at EXERT via V25 westbound, V27 northwest bound.

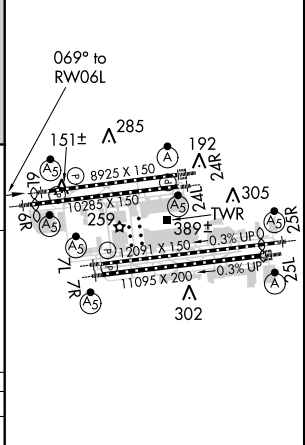
Procedure NA for arrivals at MERMA via V25 westbound.

<p>Procedure Turn NA</p> <p>NATHN</p>	<p>VGSI and RNAV glidepath not coincident (VGSI Angle 3.00/TCH 77).</p>	<p>3000</p> <p>↑ tr 069°</p>	<p>ZANAV</p> <p>✧</p>	<p>tr 040°</p>	<p>AMTRA</p> <p>△</p>
---------------------------------------	---	------------------------------	-----------------------	----------------	-----------------------



CATEGORY	A	B	C	D
RNP 0.30 DA		436/50	319 (400-1)	

ELEV 126	TDZE 117
----------	----------



TDZ/CL Rwsy 6R, 7L, 24R, and 25L
HIRL all Rwsy

AUTHORIZATION REQUIRED

SW-3, 07 FEB 2013 to 07 MAR 2013

SW-3, 07 FEB 2013 to 07 MAR 2013