

# RNAV (RNP) Z RWY 25L

LOS ANGELES INTL (LAX)

APP CRS	Rwy Idg	<b>11095</b>
<b>249°</b>	THRE	<b>98</b>
	Apf Elev	<b>126</b>

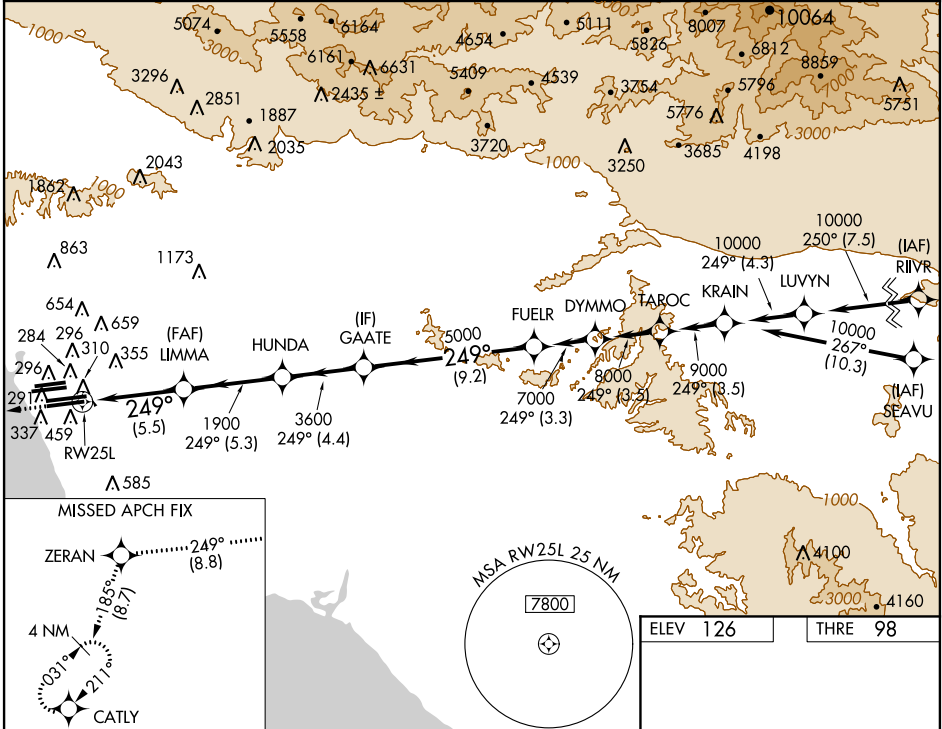
**▽** For uncompensated Baro-VNAV systems, procedure NA below 4°C (40°F), or above 48°C (118°F).

**△NA** For inoperative ALSF-2 increase visibility RNP 0.12 all Cats to RVR 5000, RNP 0.17 all Cats to RVR 6000, and increase RNP 0.30 all Cats to 1½ mile. GPS required.



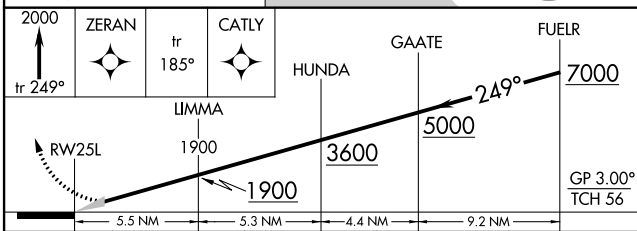
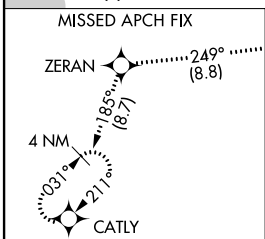
**MISSED APPROACH:** Climb to 2000 on track 249° to ZERAN and on track 185° to CATLY and hold.

ATIS	<b>124.3 363.2</b>	SOCAL APP CON	<b>124.9 269.0</b>	LOS ANGELES TOWER	<b>N 133.9 239.3</b>	GND CON	<b>N 121.65 327.0</b>	CLNC DEL	<b>121.4 327.0</b>
ARR	<b>133.8</b>			<b>S 120.95 379.1</b>		<b>S 121.75 327.0</b>			
DEP	<b>135.65</b>								



SW-3, 07 FEB 2013 to 07 MAR 2013

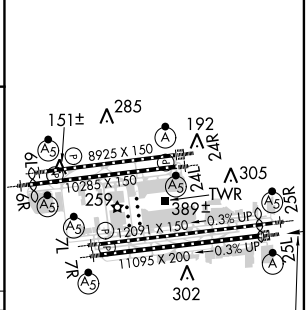
SW-3, 07 FEB 2013 to 07 MAR 2013



CATEGORY	A	B	C	D
RNP 0.12 DA		407/24	309 (300-½)	
RNP 0.17 DA		458/40	360 (400-¾)	
RNP 0.30 DA		539/50	441 (500-1)	

**AUTHORIZATION REQUIRED**

ELEV	126	THRE	98
------	-----	------	----



249° to RW25L

TDZ/CL Rwy's 6R, 7L, 24R, and 25L  
HIRL all Rwy's