


APP CRS	Rwy Idg	8925
249°	TDZE	120
	Apt Elev	126

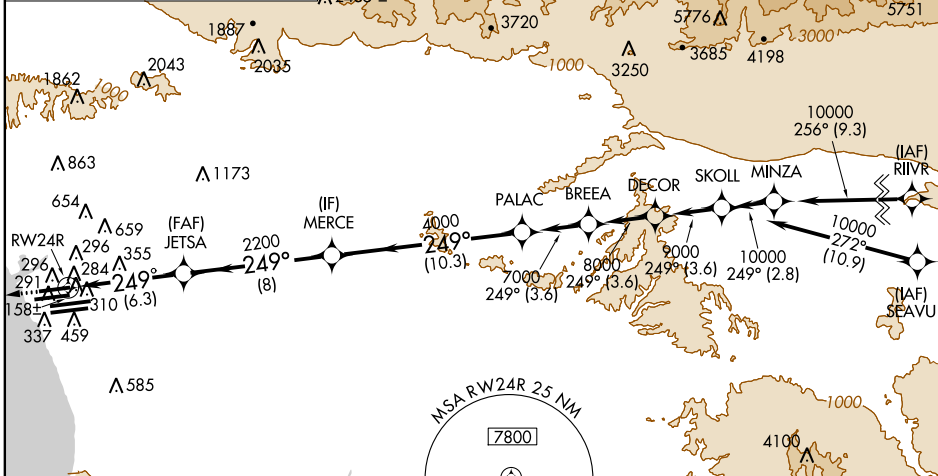
RNAV (RNP) Z RWY 24R

LOS ANGELES INTL (LAX)

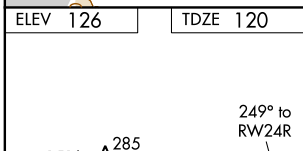
NA For uncompensated Baro-VNAV systems, procedure NA below 5°C (40°F) or above 48°C (119°F). For inoperative ALSF-2 increase RNP 0.16 visibility to RVR 6000 and RNP 0.30 to 1½ miles. GPS required.

ALSF-2
 MISSED APPROACH: Climb to 2000 via 249° track to IGUPE and via 261° track to RAFFS and hold.

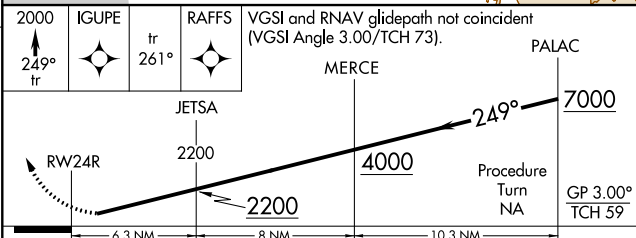
ATIS	124.3 363.2	SOCAL APP CON	124.9 269.0	LOS ANGELES TOWER	GND CON	CLNC DEL
ARR	133.8	(ARCH FM WEST)	(090°-224°)	N 133.9 239.3	N 121.65 327.0	
DEP	135.65	124.5 235.975	(225°-044°)	S 120.95 379.1	S 121.75 327.0	121.4 327.0



ELEV	126	TDZE	120
------	------------	------	------------



249° to RWY 24R



CATEGORY	A	B	C	D
RNP 0.16 DA		485/40	365 (400-¾)	
RNP 0.30 DA		584/60	464 (500-1¼)	

TDZ/CL Rwys 6R, 7L, 24R, and 25L
 HIRL all Rwys

AUTHORIZATION REQUIRED

SW-3, 07 FEB 2013 to 07 MAR 2013

SW-3, 07 FEB 2013 to 07 MAR 2013