


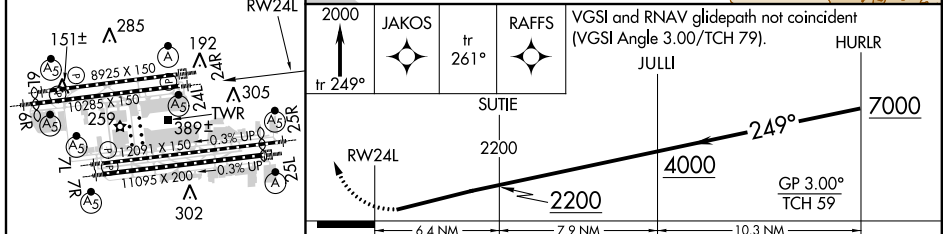
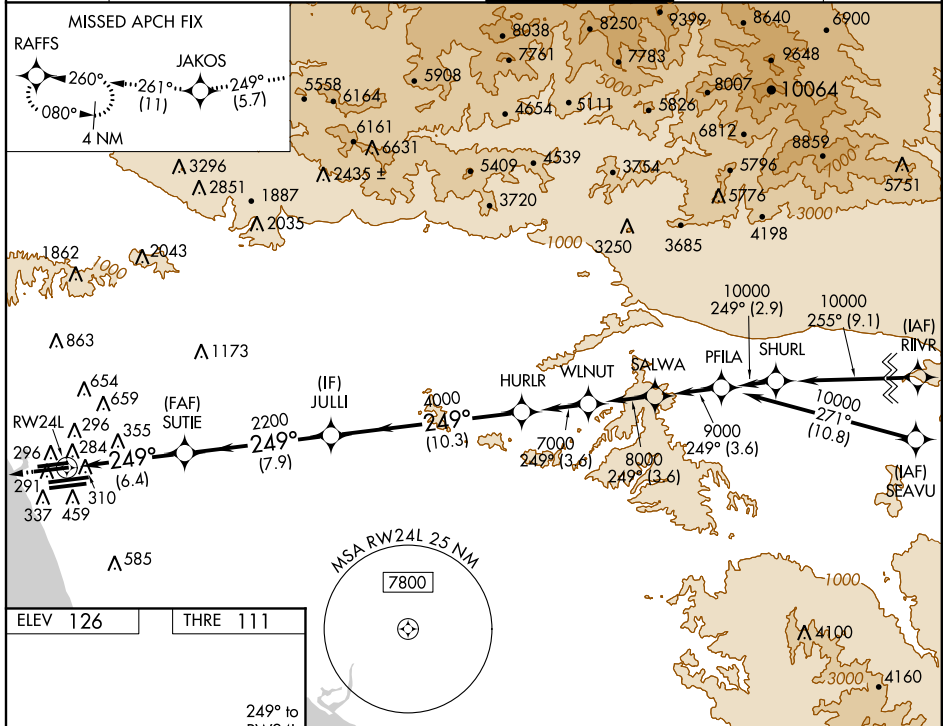
APP CRS <b>249°</b>	Rwy Idg <b>10285</b>
	THRE <b>111</b>
	Apt Elev <b>126</b>

# RNAV (RNP) Z RWY 24L

LOS ANGELES INTL (LAX)

<p><b>NA</b> For uncompensated Baro-VNAV systems, procedure NA below 4°C (40°F) or above 49°C (120°F). For inoperative MALSR, increase visibility RNP 0.15 and RNP 0.30 all Cats to 1½ mile. GPS required.</p>	<p>MALSR</p> 		<p>MISSED APPROACH: Climb to 2000 on track 249° to JAKOS and on track 261° to RAFFS and hold.</p>	

ATIS ARR <b>133.8</b> DEP <b>135.65</b>	<b>124.3 363.2</b> <small>(APCH FM WEST)</small> <b>124.5 235.975</b> <small>(225°-044°)</small>	SOCAL APP CON <b>124.9 269.0</b> <small>(090°-224°)</small> <b>128.5 360.7</b> <small>(045°-089°)</small>	LOS ANGELES TOWER <b>N 133.9 239.3</b> <b>S 120.95 379.1</b>	GND CON <b>N 121.65 327.0</b> <b>S 121.75 327.0</b>	CLNC DEL <b>121.4 327.0</b>
---	---	---	--	---	--------------------------------



CATEGORY	A	B	C	D
RNP 0.15 DA		539/50	428 (500-1)	
RNP 0.30 DA		582/60	471 (500-1¼)	

**AUTHORIZATION REQUIRED**

SW-3, 07 FEB 2013 to 07 MAR 2013

SW-3, 07 FEB 2013 to 07 MAR 2013