

REDEYE TWO ARRIVAL

ST-237 (FAA)

LOS ANGELES INTL
LOS ANGELES, CALIFORNIA

SW-3, 07 FEB 2013 to 07 MAR 2013

SOCAL APP CON
124.05 353.775
ATIS
133.8

FILMORE
112.5 FIM
Chan 72

SANTA MONICA
110.8 SMO
Chan 45
N34°00.61'
W118°27.40'

8000

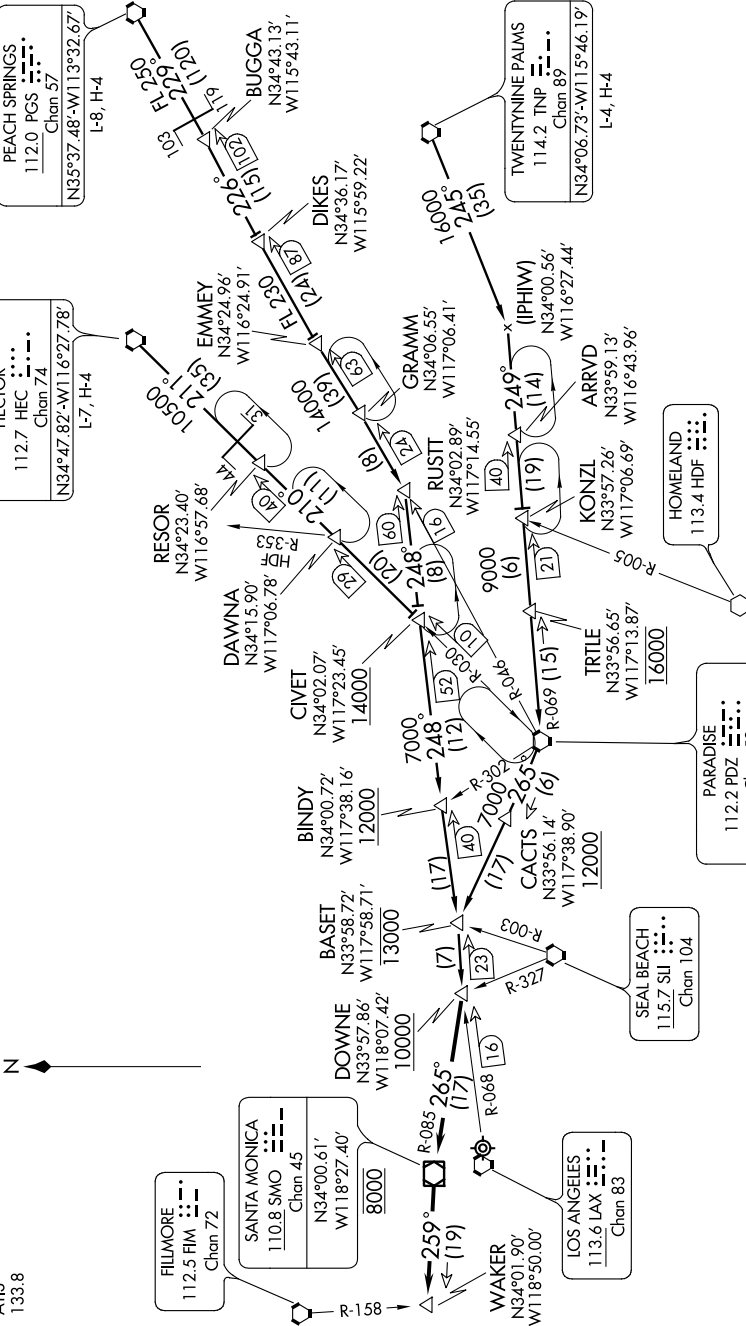
R-085

259°

(19)

WAKER
N34°01.90'
W118°50.00'

LOS ANGELES
113.6 LAX
Chan 83



NOTE: This arrival utilized to noise abatement between 0000 LCL and 0630 LCL.
NOTE: DME required.

(NARRATIVE ON FOLLOWING PAGE)

SW-3, 07 FEB 2013 to 07 MAR 2013

REDEYE TWO ARRIVAL

LOS ANGELES, CALIFORNIA
LOS ANGELES INTL

NOTE: Chart not to scale.