

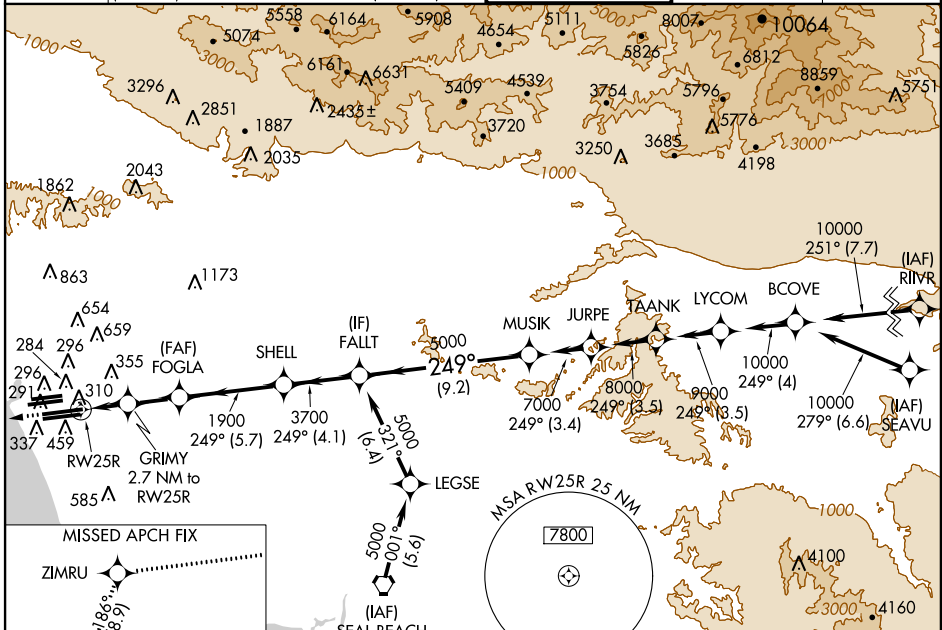
WAAS CH <b>49007</b> <b>W25B</b>	APP CRS <b>249°</b>	Rwy Idg THRE <b>94</b> Apt Elev <b>126</b>
--	------------------------	--

# RNAV (GPS) RWY 25R

LOS ANGELES INTL (LAX)

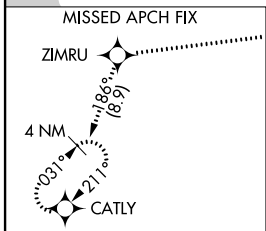
<p>▼ For uncompleted Baro-VNAV systems, LNAV/VNAV NA below -15°C (5°F) or above 43°C (109°F). For inoperative MALSRL, increase LPV all Cats visibility to RVR 4500 and LNAV/VNAV to 1 3/8 miles. DME/DME RNP-0.3 NA.</p>	<p>MALSRL</p>	<p>MISSED APPROACH: Climb to 2000 direct ZIMRU and on track 186° to CATLY and hold.</p>
--	---------------	---

<p>ATIS ARR <b>133.8</b> DEP <b>135.65</b></p>	<p><b>124.3 363.2</b> (225°-044°)</p>	<p>SOCAL APP CON <b>124.9 269.0</b> (090°-224°) <b>128.5 360.7</b> (045°-089°)</p>	<p>LOS ANGELES TOWER <b>N 133.9 239.3</b> <b>S 120.95 379.1</b></p>	<p>GND CON <b>N 121.65 327.0</b> <b>S 121.75 327.0</b></p>	<p>CLNC DEL <b>121.4 327.0</b></p>
--	---	--	---	--	--

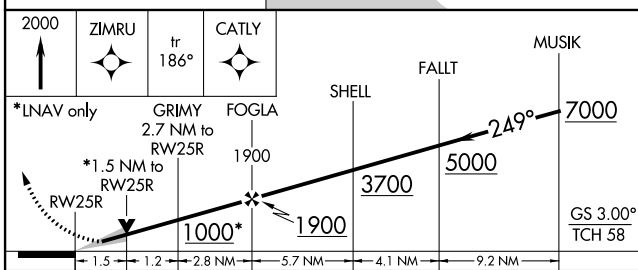


SW-3, 07 FEB 2013 to 07 MAR 2013

SW-3, 07 FEB 2013 to 07 MAR 2013

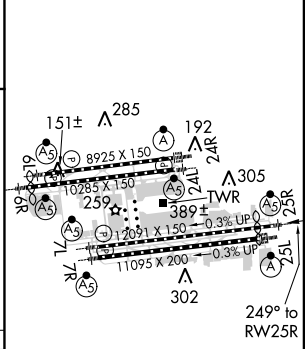


Procedure NA for arrival on SLI VORTAC airway radials 251 CW 080.



ELEV 126	THRE 94
----------	---------

CATEGORY	A	B	C	D
LPV DA		361/24	267 (300-1/2)	
LNAV/VNAV DA		568/60	474 (500-1 1/4)	
LNAV MDA	640/24	546 (600-1/2)	640/60	546 (600-1 1/4)



<p>TDZ/CL Rwws 6R, 7L, 24R, and 25L HIRL all Rwws</p>
---