

# PERCH NINE DEPARTURE

SL-237 (FAA)

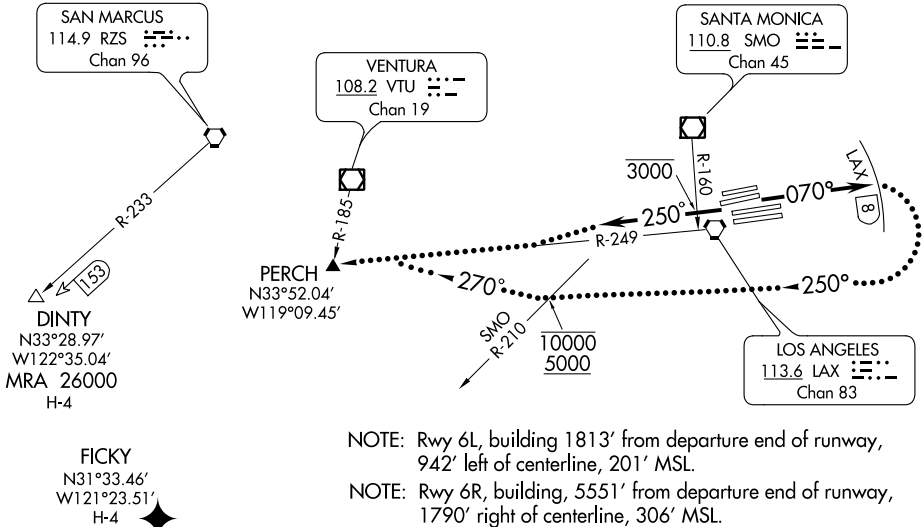
LOS ANGELES INTL (LAX)  
LOS ANGELES, CALIFORNIA

ATIS DEP 135.65  
 CLNC DEL  
 121.4 327.0  
 GND CON  
 N 121.65 327.0  
 S 121.75 327.0  
 LOS ANGELES TOWER  
 N 133.9 239.3  
 S 120.95 379.1  
 SOCAL DEP CON  
 124.3 363.2 (045°-224°)  
 125.2 263.025 (225°-044°)

### TAKE-OFF MINIMUMS

Rwys 6L, 7L/R, 24L/R, 25L/R: Standard.  
 Rwy 6R: 300-1¼ or standard with minimum climb of 231' per NM to 400'.

- NOTE: MRA DINTY DME FL 310 to receive LAX and RZS DME.
- NOTE: RZS R-233/153 DME fix DINTY DME FIX MRA 26000.
- NOTE: Route depicted is a LOST COMMUNICATIONS PROCEDURE ONLY.
- NOTE: RADAR and DME required.



- NOTE: Rwy 6L, building 1813' from departure end of runway, 942' left of centerline, 201' MSL.
- NOTE: Rwy 6R, building, 5551' from departure end of runway, 1790' right of centerline, 306' MSL.

NOTE: Chart not to scale.

### DEPARTURE ROUTE DESCRIPTION

TAKE-OFF RUNWAYS 6L/R, 7L/R: Climb via heading 070° for vector to DINTY INT or FICKY INT. Thence....

TAKE-OFF RUNWAYS 24L/R, 25L/R: Climb via heading 250° to cross SMO R-160 at or below 3000, then via radar vectors to DINTY INT or FICKY INT. Thence ....

...via (assigned route). All aircraft expect further clearance to filed flight level three minutes after departure.

### LOST COMMUNICATIONS:

TAKE-OFF RUNWAYS 6L/R, 7L/R: If not in contact with Departure Control upon reaching LAX 8 DME, turn right heading 250°. Cross SMO R-210 at or above 5000' and at or below 10000'. After leaving 10000', turn right heading 270° to intercept and proceed via LAX R-249 to PERCH INT.

TAKE-OFF RUNWAYS 24L/R, 25L/R: If not in contact with Departure Control within five minutes after departure, proceed to PERCH INT via LAX R-249.

Climb to FL230 or filed altitude whichever is lower. Aircraft filing FL240 or above climb to filed altitude ten minutes after departure.

# PERCH NINE DEPARTURE

SW-3, 07 FEB 2013 to 07 MAR 2013

SW-3, 07 FEB 2013 to 07 MAR 2013