

(OLDEE.OLDEE1) 12040
OLDEE ONE ARRIVAL

ST-237 (FAA)

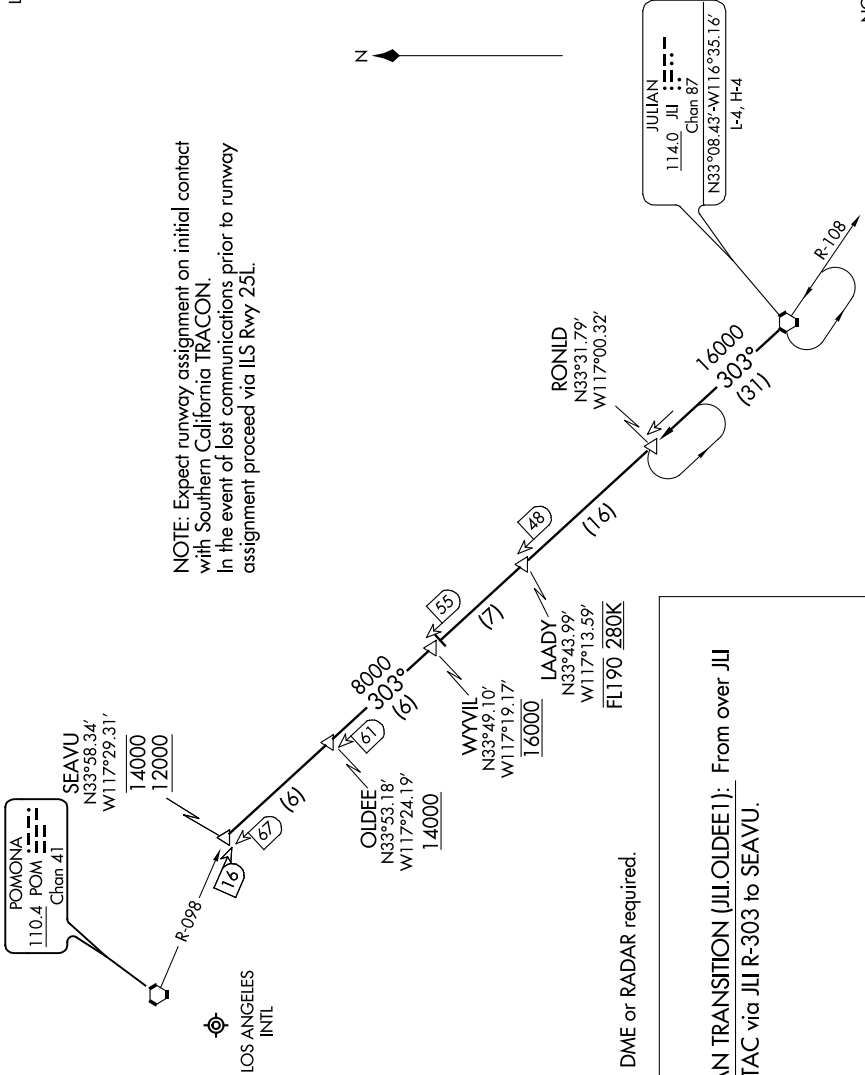
LOS ANGELES INTL
 LOS ANGELES, CALIFORNIA

SW-3, 07 FEB 2013 to 07 MAR 2013

SOCAL APP CON
 124.05 353.775
 LOS ANGELES TOWER
 N 133.9 239.3
 S 120.95 379.1
 ATIS 133.8

NOTE: Chart not to scale.

NOTE: Expect runway assignment on initial contact with Southern California TRACON. In the event of lost communications prior to runway assignment proceed via ILS Rwy 25L.



NOTE: DME or RADAR required.

JULIAN TRANSITION (JLI.OLDEE1): From over JLI VORTAC via JLI R-303 to SEAVU.

OLDEE ONE ARRIVAL
 (OLDEE.OLDEE1) 12040

LOS ANGELES, CALIFORNIA
 LOS ANGELES INTL

SW-3, 07 FEB 2013 to 07 MAR 2013