

OCEAN TWO ARRIVAL

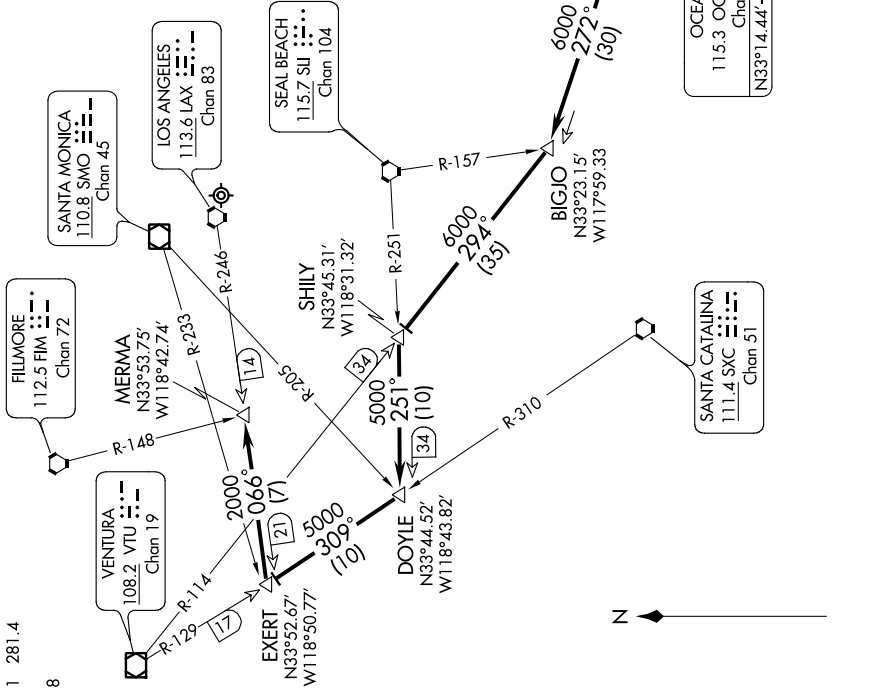
ST-237 (FAA)

LOS ANGELES INTL
LOS ANGELES, CALIFORNIA

SW-3, 07 FEB 2013 to 07 MAR 2013

From over JLI VORTAC via JLI R-263 and OCN R-083 to OCN VORTAC, then via OCN R-272 and VTU R-114 to SHILY INT, then via SHI R-251 and VTU R-129 to EXERT INT, then via LAX R-246 to MERMA INT. Expect radar vectors to final approach course for Runways 6 or 7.

SOCAL APP CON
128.1 281.4
ATIS
133.8



OCEAN TWO ARRIVAL

LOS ANGELES, CALIFORNIA
LOS ANGELES INTL

SW-3, 07 FEB 2013 to 07 MAR 2013

NOTE: Chart not to scale.