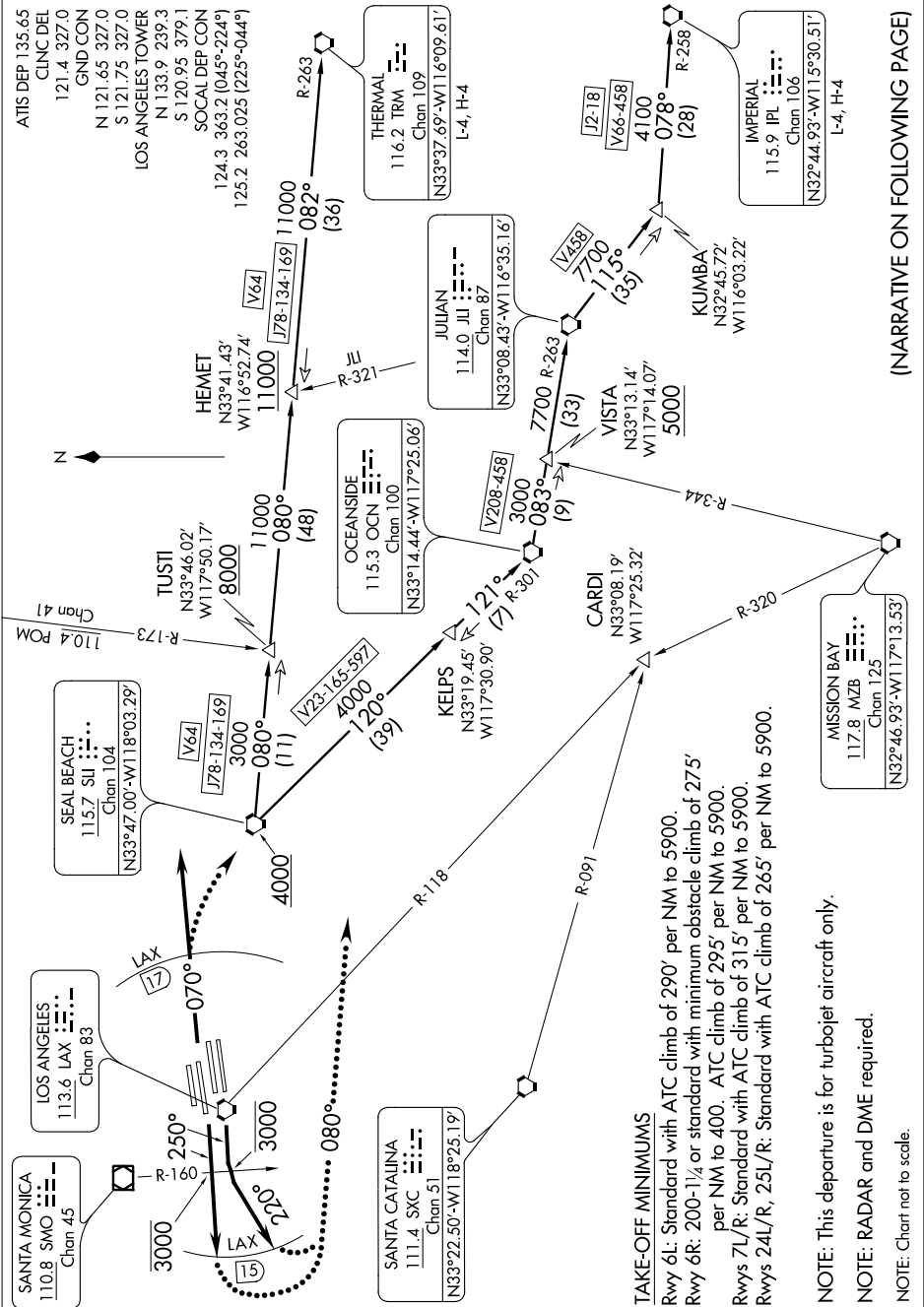


LAXX SIX DEPARTURE

SL-237 (FAA)

LOS ANGELES INTL (LAX)
LOS ANGELES, CALIFORNIA

SW-3, 07 FEB 2013 to 07 MAR 2013



TAKE-OFF MINIMUMS

- Rwy 6L: Standard with ATC climb of 290' per NM to 5900.
- Rwy 6R: 200-1/4 or standard with minimum obstacle climb of 275' per NM to 400. ATC climb of 295' per NM to 5900.
- Rwys 7L/R: Standard with ATC climb of 315' per NM to 5900.
- Rwys 24L/R, 25L/R: Standard with ATC climb of 265' per NM to 5900.

NOTE: This departure is for turbojet aircraft only.

NOTE: RADAR and DME required.

NOTE: Chart not to scale.

(NARRATIVE ON FOLLOWING PAGE)

SW-3, 07 FEB 2013 to 07 MAR 2013