

LOC/DME I-MKZ 109.9 Chan 36	APP CRS 069°	Rwy Idg THRE Apt Elev	7R 11095 119 126	7L 12091 119 126
--	------------------------	-----------------------------	--	--

ILS or LOC RWY 7R

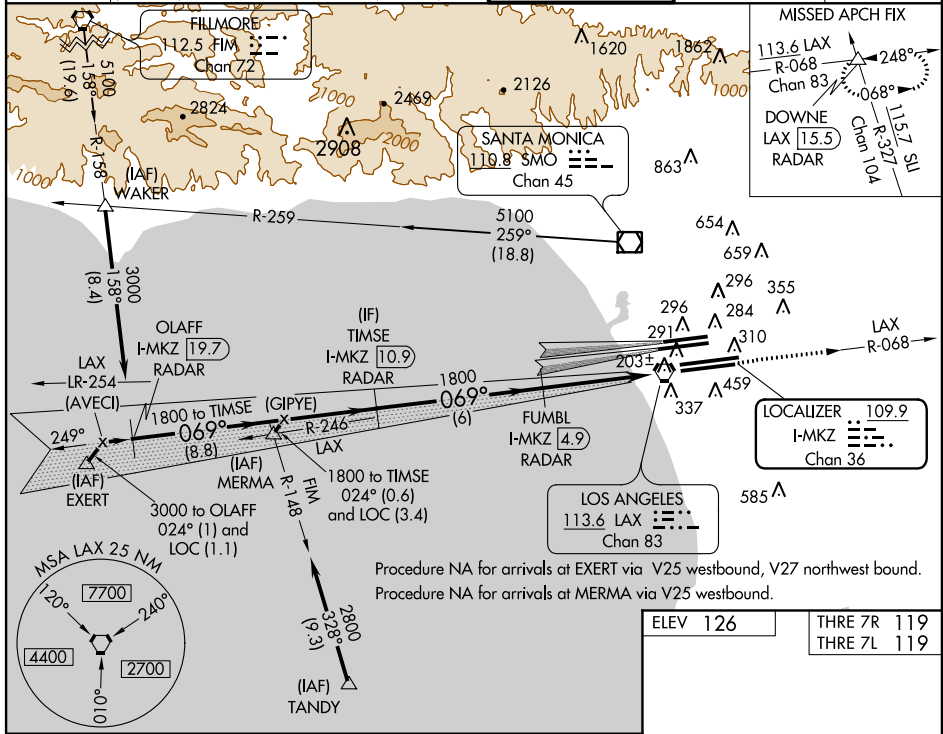
LOS ANGELES INTL (LAX)

▼ DME or RADAR required. Autopilot coupled approach NA below 264. For inoperative MALS, increase S-LOC 7R Cat D visibility to RVR 5000. Inoperative table does not apply to Sidestep Rwy 7L Cat A/B. Simultaneous approach authorized with Rwy 6L/R.

MALS Rwy 7R and 7L

MISSED APPROACH: Climb to 3000 via LAX VORTAC R-068 to DOWNE INT/LAX 15.5 DME/RADAR and hold.

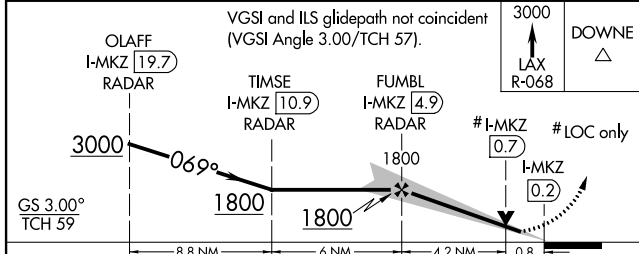
ATIS ARR 133.8 DEP 135.65	124.3 363.2 (ARCH FM WEST) 124.5 235.975 (225°-044°)	SOCAL APP CON	124.9 269.0 (090°-224°) 128.5 360.7 (045°-089°)	LOS ANGELES TOWER N 133.9 239.3 S 120.95 379.1	GND CON N 121.65 327.0 S 121.75 327.0	CLNC DEL 121.4 327.0
---	---	---------------	--	--	---	--------------------------------



SW-3, 07 FEB 2013 to 07 MAR 2013

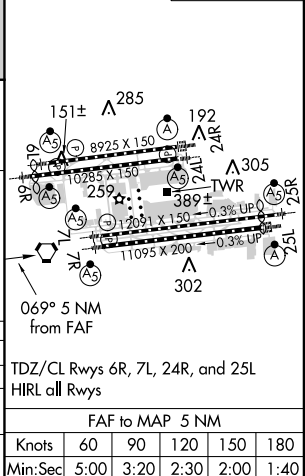
SW-3, 07 FEB 2013 to 07 MAR 2013

Procedure NA for arrivals at EXERT via V25 westbound, V27 northwest bound.
Procedure NA for arrivals at MERMA via V25 westbound.



ELEV 126	THRE 7R 119
	THRE 7L 119

CATEGORY	A	B	C	D
S-ILS 7R	319/24 200 (200-½)			
S-LOC 7R	460/24 341 (400-½)			460/40 341 (400-¾)
SIDESTEP 7L	520/50 401 (400-1)			520-1½ 401 (400-1½)



TDZ/CL Rwy 6R, 7L, 24R, and 25L	FAF to MAP 5 NM					
HIRL all Rwy's						
	Knots	60	90	120	150	180
	Min:Sec	5:00	3:20	2:30	2:00	1:40