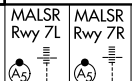


LOC/DME I-HAS 111.1 Chan 48	APP CRS 069°	Rwy Idg THRE Apt Elev	7L 12091 119 126	7R 11095 119 126
--	------------------------	-----------------------------	--	--

ILS or LOC RWY 7L

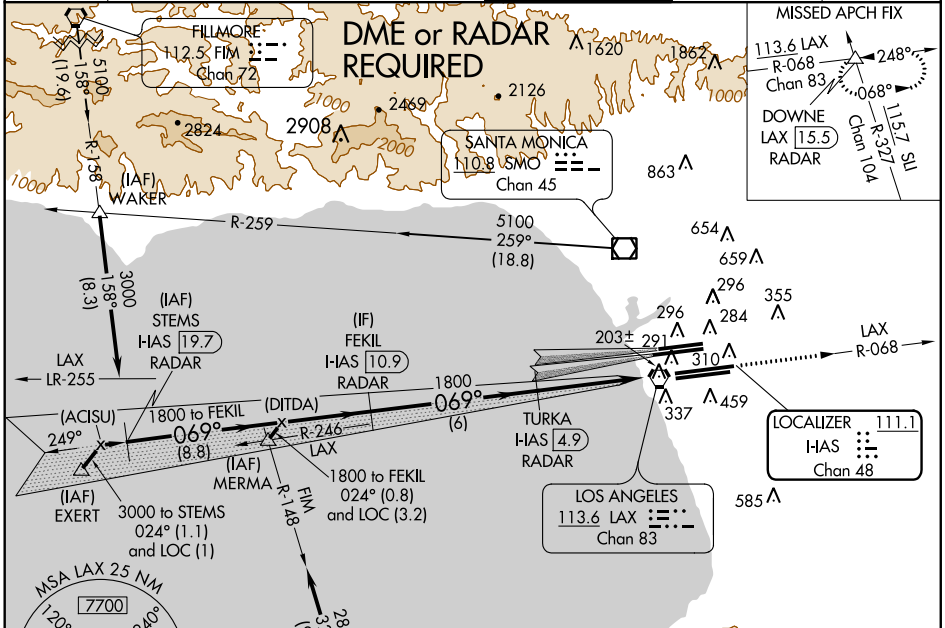
LOS ANGELES INTL (LAX)

▼ Inoperative table does not apply to Sidestep Rwy 7R Cats A and B.
Simultaneous approach authorized with Rwy 6L/R.



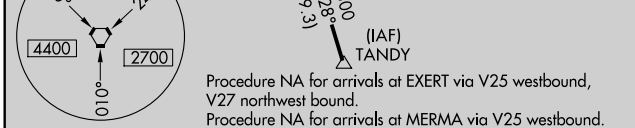
MISSED APPROACH: Climb to 3000 via LAX VORTAC R-068 to DOWNE INT/ LAX 15.5 DME/RADAR and hold.

ATIS ARR 133.8 DEP 135.65	124.3 363.2 (APCH FM WEST) 124.5 235.975 (225°-044°)	SOCAL APP CON 124.9 269.0 (090°-224°) 128.5 360.7 (045°-089°)	LOS ANGELES TOWER N 133.9 239.3 S 120.95 379.1	GND CON N 121.65 327.0 S 121.75 327.0	CLNC DEL 121.4 327.0
---	---	---	--	---	--------------------------------



SW-3, 07 FEB 2013 to 07 MAR 2013

SW-3, 07 FEB 2013 to 07 MAR 2013



CATEGORY	A	B	C	D
S-ILS 7L	320/18 201 (200-½)			
S-LOC 7L	520/24	401 (400-½)	520/40 401 (400-¾)	
SIDESTEP 7R	520/50 401 (400-1)		520-1½ 401 (400-1½)	

