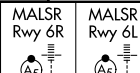


LOC/DME I-GPE <b>111.7</b> Chan <b>54</b>	APP CRS <b>069°</b>	Rwy Idg THRE Apt Elev	6R <b>9954</b> <b>108</b> <b>126</b>	6L <b>8925</b> <b>112</b> <b>126</b>
---	------------------------	-----------------------------	---	---

# ILS or LOC RWY 6R

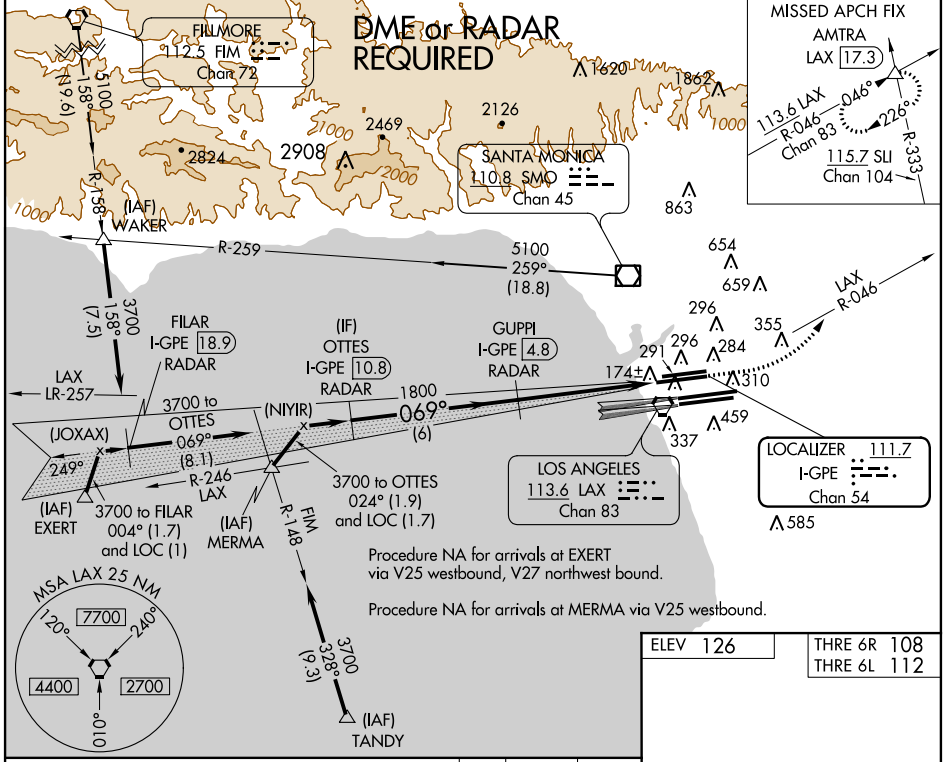
LOS ANGELES INTL (LAX)

**▼** Inoperative table does not apply to Sidestep Rwy 6L Cats A and B. Simultaneous approach authorized with Rwy 7L/R.

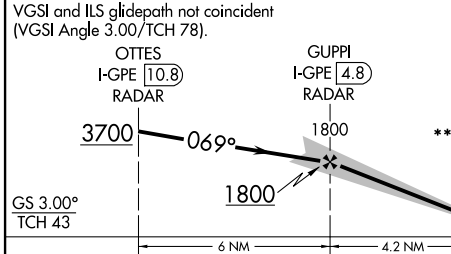


**MISSED APPROACH:** Climb to 600 then climbing left turn to 3000 via LAX VORTAC R-046 to AMTRA INT/LAX 17.3 DME and hold.

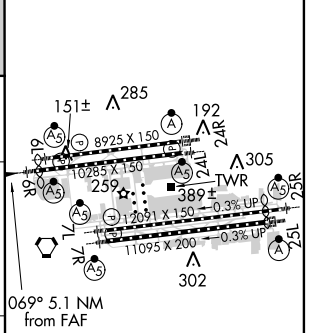
ATIS ARR <b>133.8</b> DEP <b>135.65</b>	<b>124.3 363.2</b> (ARCH FIM WEST) <b>124.5 235.975</b> (225°-044°)	SOCAL APP CON <b>124.9 269.0</b> (039°-224°) <b>128.5 360.7</b> (045°-089°)	LOS ANGELES TOWER <b>N 133.9 239.3</b> <b>S 120.95 379.1</b>	GND CON <b>N 121.65 327.0</b> <b>S 121.75 327.0</b>	CLNC DEL <b>121.4 327.0</b>
---	--	---	--	---	--------------------------------



Procedure NA for arrivals at MERMA via V25 westbound.



ELEV 126	THRE 6R 108	THRE 6L 112
----------	-------------	-------------



SW-3, 07 FEB 2013 to 07 MAR 2013

SW-3, 07 FEB 2013 to 07 MAR 2013