

LOC/DME I-CFN <b>111.1</b> Chan <b>48</b>	APP CRS <b>250°</b>	Rwy Idg THRE Apt Elev	25R <b>11134</b>	25L <b>11095</b> <b>94</b> <b>98</b> <b>126</b> <b>126</b>
---	------------------------	-----------------------------	---------------------	--

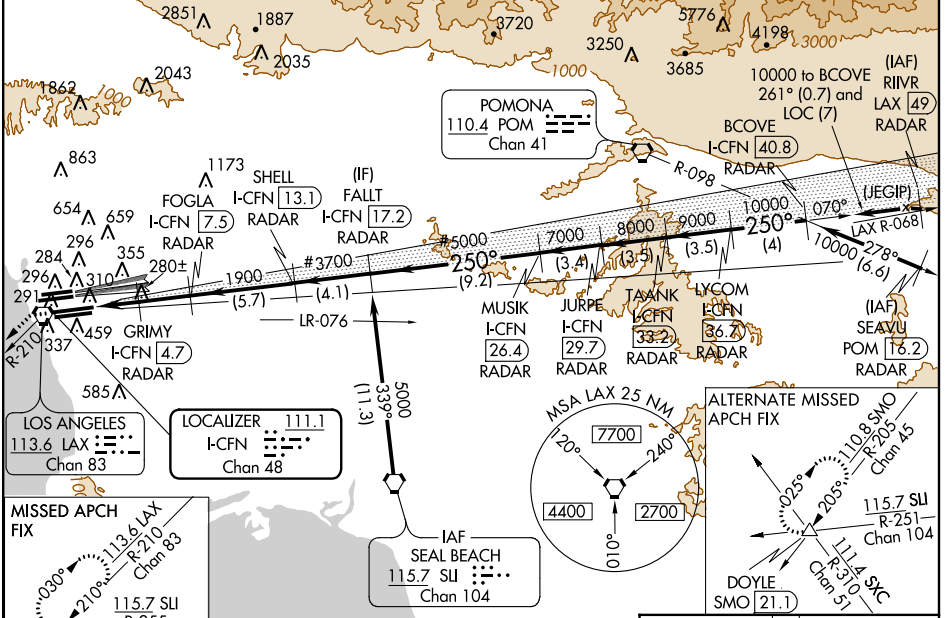
# ILS or LOC RWY 25R

## LOS ANGELES INTL (LAX)

⚠️ \*\*RVR 1800 authorized with use of FD or AP or HUD to DA. Simultaneous approach authorized with Rwy 24L/R. DME or RADAR required for LOC 25R minimums. For inoperative MALSR, increase S-LOC 25R Cats C and D visibility to 1 3/8 miles, sidestep S-25L Cats C and D visibility to 1 3/4 miles, inoperative table does not apply to sidestep 25L Cats A and B.

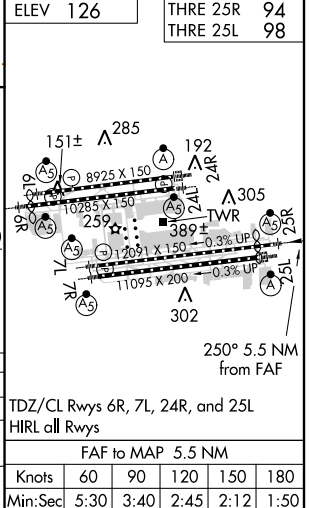
MALSR Rwy 25R 	ALSF-2 Rwy 25L 	MISSED APPROACH: Climb to 800 then climbing left turn to 2000 on heading 200° and LAX VORTAC R-210 to CATLY INT/LAX 12.8 DME and hold.
-------------------	--------------------	--

ATIS ARR <b>133.8</b> DEP <b>135.65</b>	<b>124.3 363.2</b> (APCH FM WEST) <b>124.5 235.975</b> (225°-044°)	SOCAL APP CON	<b>124.9 269.0</b> (090°-224°) <b>128.5 360.7</b> (045°-089°)	LOS ANGELES TOWER <b>N 133.9 239.3</b> <b>S 120.95 379.1</b>	GND CON <b>N 121.65 327.0</b> <b>S 121.75 327.0</b>	CLNC DEL <b>121.4 327.0</b>
---	---	---------------	--	--	---	--------------------------------



ELEV 126	THRE 25R 94	THRE 25L 98
----------	-------------	-------------

800	2000	LAX R-210	CATLY INT	# When assigned by ATC, intercept glidepath at 3700 or 5000.	LYCOM BCOVE																		
↑	hdg 200°				TAANK I-CFN 33.2 RADAR																		
*LOC only	FOGLA I-CFN 7.5 RADAR	SHELL I-CFN 13.1 RADAR	FALLT I-CFN 17.2 RADAR	MUSIK I-CFN 29.7 RADAR	JURPE I-CFN 36.7 RADAR																		
*I-CFN 3.3 RADAR	GRIMY I-CFN 4.7 RADAR																						
I-CFN 2																							
1.3	1.4	2.8 NM	5.7 NM	4.1 NM	9.2 NM																		
		A		B	C																		
S-ILS 25R	**294/24				200 (200-1/2)																		
S-LOC 25R	560/24	466 (500-1/2)		560/50	466 (500-1)																		
SIDESTEP 25L	720/50	622 (600-1)		720-1 3/8	622 (600-1 3/8)																		
<table border="1"> <tr> <td colspan="6">FAF to MAP 5.5 NM</td> </tr> <tr> <td>Knots</td> <td>60</td> <td>90</td> <td>120</td> <td>150</td> <td>180</td> </tr> <tr> <td>Min:Sec</td> <td>5:30</td> <td>3:40</td> <td>2:45</td> <td>2:12</td> <td>1:50</td> </tr> </table>						FAF to MAP 5.5 NM						Knots	60	90	120	150	180	Min:Sec	5:30	3:40	2:45	2:12	1:50
FAF to MAP 5.5 NM																							
Knots	60	90	120	150	180																		
Min:Sec	5:30	3:40	2:45	2:12	1:50																		



SW-3, 07 FEB 2013 to 07 MAR 2013

SW-3, 07 FEB 2013 to 07 MAR 2013

# LOS ANGELES INTL (LAX)

## ILS or LOC RWY 25R